

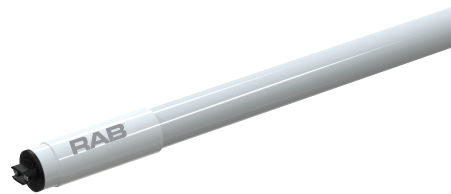
INSTRUCTIONS

LED T8 Tube Series - Double ended bypass/line voltage



RAB Lighting is committed to creating high-quality, affordable, well-designed and energy-efficient LED lighting and controls that make it easy for electricians to install and end users to save energy. We'd love to hear your comments. Please call the Marketing Department at 888-RAB-1000 or email: marketing@rablighting.com

T8HO-40-96G-R17D-8XX-DE-BYP



IMPORTANT

READ CAREFULLY BEFORE INSTALLING LED TUBE. RETAIN THESE INSTRUCTIONS FOR FUTURE REFERENCE.

RAB LED tube must be wired in accordance with the National Electrical Code and all applicable local codes. Proper grounding is required for safety. THIS PRODUCT MUST BE INSTALLED IN ACCORDANCE WITH THE APPLICABLE INSTALLATION CODE BY A PERSON FAMILIAR WITH THE CONSTRUCTION AND OPERATION OF THE PRODUCT AND THE HAZARDS INVOLVED.

WARNINGS:

WARNING - Risk of fire or electric shock. LED Retrofit Kit installation requires knowledge of luminaires electrical systems. If not qualified, do not attempt installation. Contact a qualified electrician.

WARNING - Risk of fire or electric shock. Install this kit only in the luminaires that have the construction features and dimensions shown in the photographs and/or drawings and where the input rating of the retrofit kit does not exceed the input rating of the luminaire.

WARNING -To prevent wiring damage or abrasion, do not expose wiring to edges of sheet metal or other sharp objects.

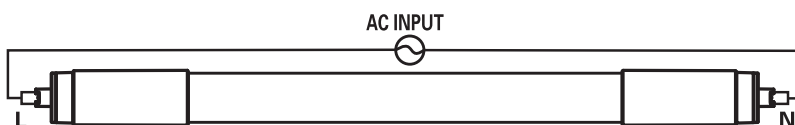
SAFETY INFORMATION:

For your and others' safety, please read the precaution carefully before installation:

- (1). Switch off the power supply before commencing work, make sure correct connection before power on.
- (2). Suitable for use with the emergency equipment : DRI-10-EMGR-TYPE B

PRODUCT FEATURES

- UL certified
- Full glass housing: no aging, yellowing, bending
- Double ended:



- Product applications: widely used in residential buildings, offices, shopping malls, supermarkets, hospitals, assembly lines, warehouses, etc. for energy-saving illumination.

Note: These instructions do not cover all details or variations in equipment nor do they provide for every possible situation during installation, operation or maintenance.

RAB Lighting is committed to creating high-quality, affordable, well-designed and energy-efficient LED lighting and controls that make it easy for electricians to install and end users to save energy. We'd love to hear your comments. Please call the Marketing Department at 888-RAB-1000 or email: marketing@rablighting.com

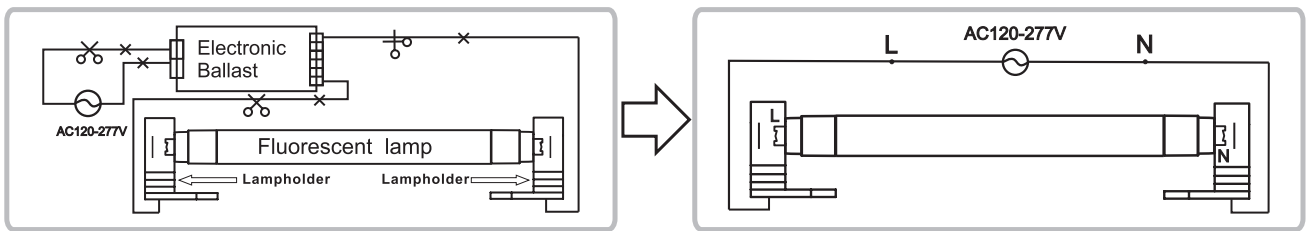
INSTALLATION INSTRUCTIONS

The ballast wiring represents typical configuration. The actual ballast wiring varies according to ballast model.

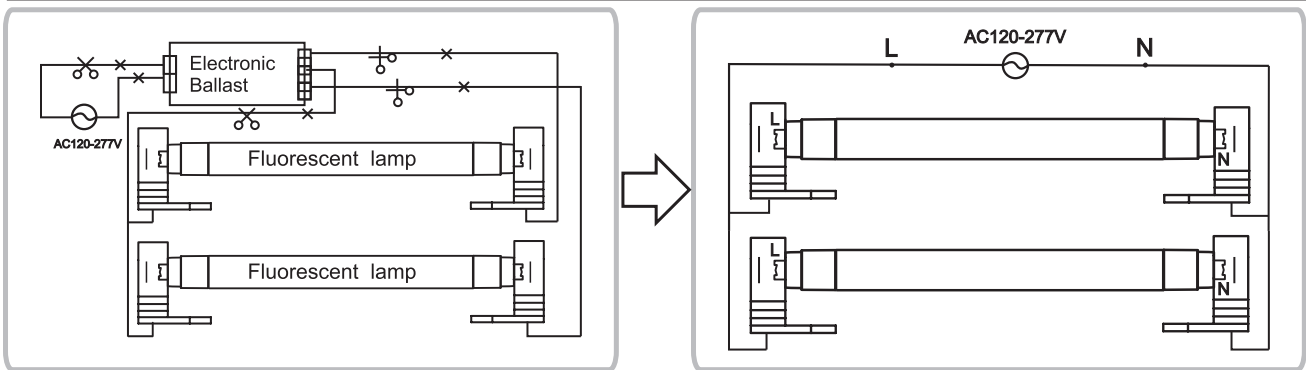
It is not needed to change socket (if in good condition) to operate double ended lamps, regardless the type of sockets. Please make sure one side of fixture is connected to Live (L) and the other side to Neutral (N).

Wiring Instruction - Electronic Ballast

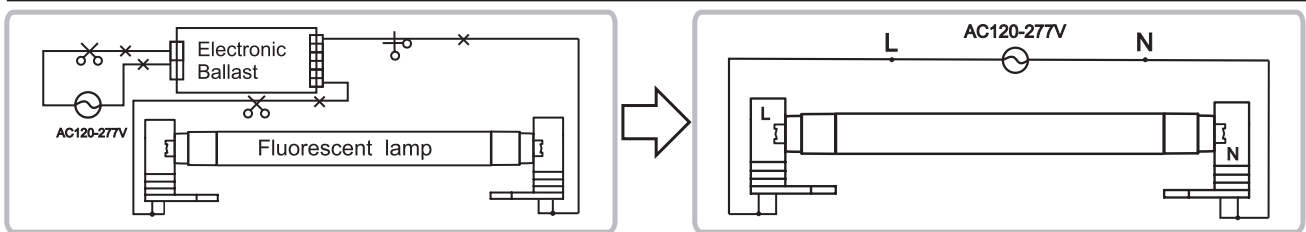
Retrofit luminaire with shunted lampholders — 1 lamp



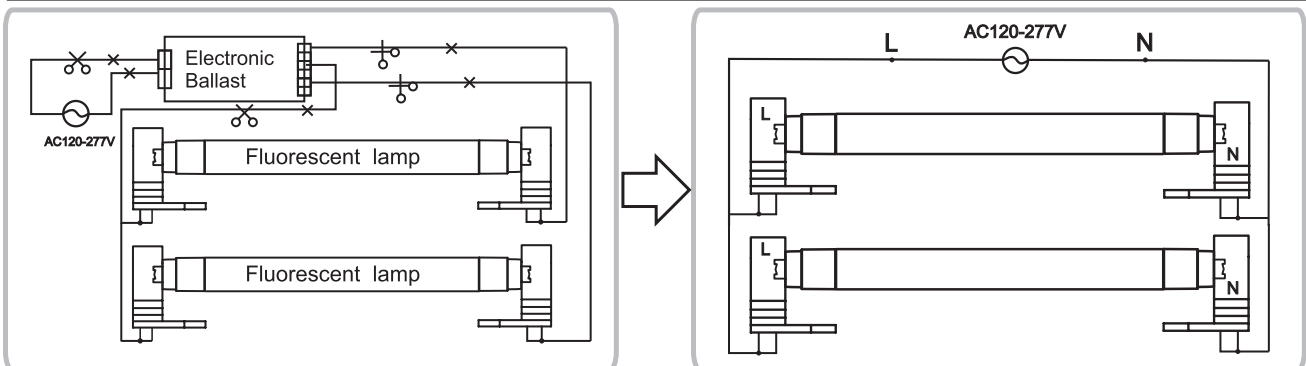
Retrofit luminaire with shunted lampholders — 2 lamps



Retrofit luminaire with non-shunted lampholders — 1 lamp



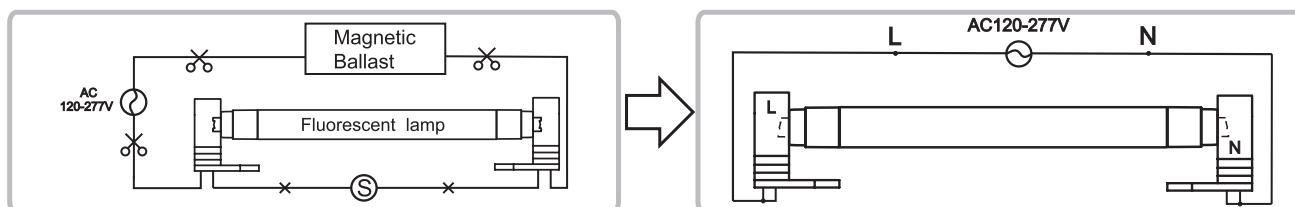
Retrofit luminaire with non-shunted lampholders — 2 lamps



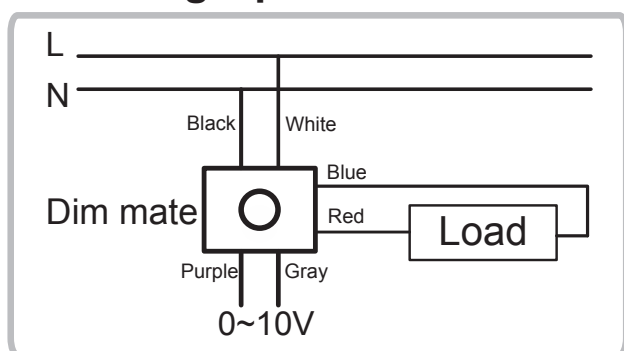
RAB Lighting is committed to creating high-quality, affordable, well-designed and energy-efficient LED lighting and controls that make it easy for electricians to install and end users to save energy. We'd love to hear your comments. Please call the Marketing Department at 888-RAB-1000 or email: marketing@rablighting.com

Wiring Instruction - Magnetic Ballast

Retrofit luminaire Magnetic Ballast



Dimming Operation



0-10V Continuous dimming by selected Dim-mate&Dimmer Kit in the package, Operation refer to the wiring diagram "Dimmable via an external accessory" in definition of DLC V5.1.
This lamp may not be compatible with all dimmers, for more information, please contact RAB Lighting.

PRODUCT NOTES

The units covered by this report were intended to retrofit surface mount, Type IC or non-IC recessed mount Listed fluorescent luminaires that use maximum 2 tubular lamps, the minimum lamp compartment dimensions are tabulated below:

Model Name	Minimum Lamp Compartment Dimensions [Length x Width x Height] [mm]	Lamp Quantity	Lamp-to lamp Spacing[mm]
T10277(T8HO-40-96G-R17D-830-DE-BYP)	2440 x 270 x 70	2	110
T10278(T8HO-40-96G-R17D-835-DE-BYP)			
T10279(T8HO-40-96G-R17D-840-DE-BYP)			
T10280(T8HO-40-96G-R17D-850-DE-BYP)			

This device complies with Part 15 of the FCC Rules. Operation is subject to the following two conditions: (1) this device may not cause harmful interference, and (2) this device must accept any interference received, including interference that may cause undesired operation.

WARNING

Installers should not disconnect existing wires from lampholder terminals to make new connections at lampholder terminals. Instead installers should cut existing lampholder leads away from the lampholder and make new electrical connections to lampholder lead wires by employing applicable connectors.

Do not make or alter any open holes in an enclosure of wiring or electrical components during kit installation.

THE RETROFIT ASSEMBLY IS ACCEPTED AS A COMPONENT OF A LUMINAIRE WHERE THE SUITABILITY OF THE COMBINATION SHALL BE DETERMINED BY UL OR AUTHORITIES HAVING JURISDICTION.

THERE ARE LED TUBE, OPERATION INSTRUCTION AND FIELD APPLIED LABEL IN THIS RETROFIT KIT.

Installers should examine all parts that are not intended to be replaced by the retrofit kit for damage and replace any damaged parts prior to installation of the retrofit kit.