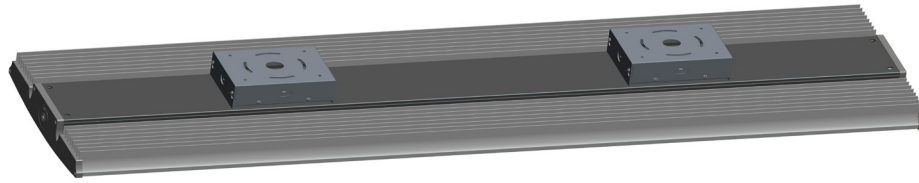


HIGHBAY RAIL® PENDANT 400W/ 52in INSTALLATION INSTRUCTIONS

RAB
LIGHTING

Thank you for buying RAB lighting fixtures. Our goal is to design the best quality products to get the job done right. We'd like to hear your comments. Call the Marketing Department at 888-RAB-1000 or email: marketing@rabweb.com



IMPORTANT

READ CAREFULLY BEFORE INSTALLING FIXTURE. RETAIN THESE INSTRUCTIONS FOR FUTURE REFERENCE.

Fixtures must be wired in accordance with the National Electrical Code and all applicable local codes. Proper grounding is required for safety. THIS PRODUCT MUST BE INSTALLED IN ACCORDANCE WITH THE APPLICABLE INSTALLATION CODE BY A PERSON FAMILIAR WITH THE CONSTRUCTION AND OPERATION OF THE PRODUCT AND THE HAZARDS INVOLVED.

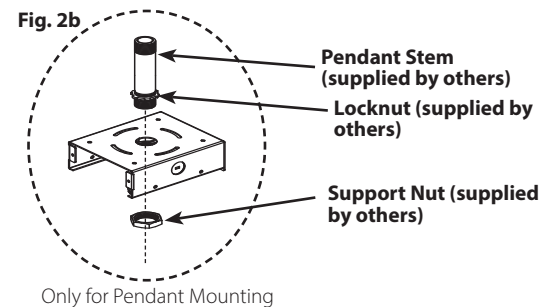
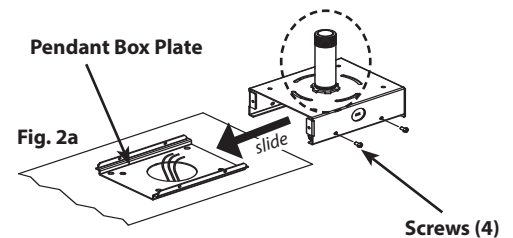
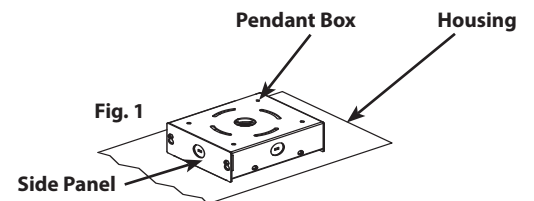
WARNING: Make certain power is OFF before installing or maintaining fixture. No user serviceable parts inside.

MOUNTING FIXTURE TO CEILING

RAIL Pendant 400W is provided with two (2) Pendant Box. Mount **Housing** to sturdy ceiling structure as follows:

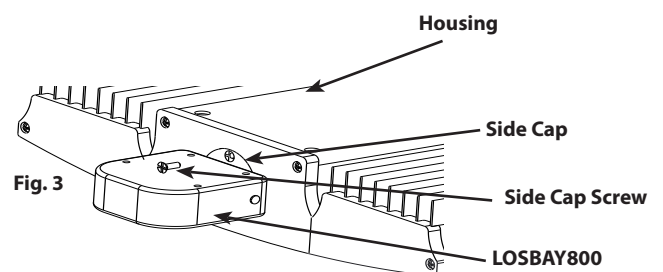
FOR PENDANT MOUNTING

1. Choose equal length of two 3/4" NPS **Pendant Stems (supplied by others)** secured to mounting surface using appropriate mounting hardware.
2. Loosen screws (2) and remove **Side Panel** from each **Pendant Box** as shown in **Fig. 1**.
3. Loosen **Screws (4)** and slide **Pendant Box** from each **Pendant Box Plate/ Housing** as shown in **Fig. 2a**.
4. Secure **Pendant Stems** to the clearance hole on **Pendant Boxes** using **Locknut** and **Support Nut (supplied by others)** as shown in **Fig. 2b**. Add thread locking compound and tighten locknut/ nut to prevent fixture rotation.
5. Slide **Pendant Boxes** onto **Pendant Box Plate/ Housing** and tighten **Screws (4)**.
6. Feed supply wires through one of the **Pendant Stem**. Wire the housing leads to supply wires using UL listed wire connectors according to NEC and local codes in the **Pendant Box**. Push all wires back into **Pendant Box**. Be careful not to pinch wires.
7. Replace **Side Panel** and tighten screws (2) as shown in **Fig. 1**.
8. If ordered with **LOS800** sensor (suffix /LOS) or similar sensor or LightCloud™ controller, re-attach pre-wired sensor on **Side Cap** to **Housing**. Tighten **Side Cap Screw** as shown in **Fig. 3**.



FOR SURFACE MOUNTING

1. Follow Step 2 and 3 in For Pendant Mounting section.
2. Mount each **Pendant Box** to ceiling by drilling out **Drill Out Locations** as shown on **Fig. 4**. Use appropriate mounting hardware suitable for the mounting surface.
3. Slide **Pendant Boxes** onto **Pendant Box Plate/ Housing** and tighten **Screws (4)**.
4. Wire the housing leads to supply wires using UL listed wire connectors according to NEC and local codes in one of the **Pendant Box**. Push all wires back into **Pendant Box**. Be careful not to pinch wires.
5. Replace **Side Panel** and tighten screws (2) as shown in **Fig. 1**.
6. Follow Step 8 in For Pendant Mounting section, if ordering with sensor/ controller option.



HIGHBAY RAIL® PENDANT 400W/ 52in INSTALLATION INSTRUCTIONS



Thank you for buying RAB lighting fixtures. Our goal is to design the best quality products to get the job done right. We'd like to hear your comments. Call the Marketing Department at 888-RAB-1000 or email: marketing@rabweb.com

CEILING MOUNT DRILL OUT LOCATIONS

(Not to scale)

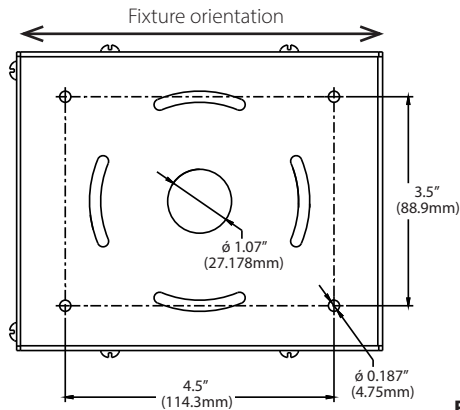


Fig. 4

0-10V DIMMABLE WIRING

Universal voltage driver permits operation at 120V thru 277V, 50 or 60 Hz. Units ordered with (/480/D10) suffix are 480V, 50Hz or 60Hz. For 0-10V Dimming, follow the wiring directions as in Fig. 5.

1. Connect the black fixture lead to the LINE supply lead.
2. Connect the white fixture lead to the COMMON supply lead.
3. Connect the GROUND wire from fixture to supply ground.
4. Connect the purple fixture lead to the (V+) DIM lead.
5. Connect the gray fixture lead to the (V-) DIM lead.
6. Cap the yellow fixture lead, if present. Do NOT connect.

NOTE: Do not connect DIM V+ (purple)/ DIM V- (gray) to line voltage or supply ground.

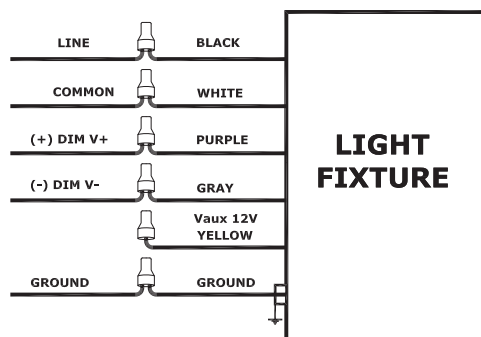


Fig. 5

BILEVEL DIMMER OPTION

For 100% light output (disabling the dimmer), splice red wire with black line wire.

For chosen output only, leave red wire capped.

For Bilevel Function, connect red wire to switched device.

1. Determine what % light output is desired and set switch prior to installation.
Options are: 25%, 50%, and 75%.
2. Connect purple wire with driver's purple wire.
3. Connect gray wire with driver's gray wire.
4. Connect black wire with driver and supply line wires.
5. Connect white wire with driver and supply neutral wires.

CLEANING & MAINTENANCE

CAUTION: Be sure fixture temperature is cool enough to touch. Do not clean or maintain while fixture is energized.

1. Lens should be washed in a solution of warm water and any mild, non abrasive household detergent, rinsed with clean water and wiped dry. Do not use chemicals to clean fixture.
2. Do not open fixture to clean the LED. Do not touch the LED.

TROUBLESHOOTING

1. Check that the line voltage at fixture is correct. Refer to wiring directions.
2. Be sure the fixture is grounded properly.

PATENT - US: Patent D761,477

Note: These instructions do not cover all details or variations in equipment nor do they provide for every possible situation during installation, operation or maintenance.



Easy Answers

rabweb.com
Visit our website for product info

Tech Help Line
Call our experts - 888 722-1000

e-mail
Answered promptly - sales@rabweb.com

Free Lighting Layouts
Answered online or by request