



## Technical Specifications (continued)

### Electrical

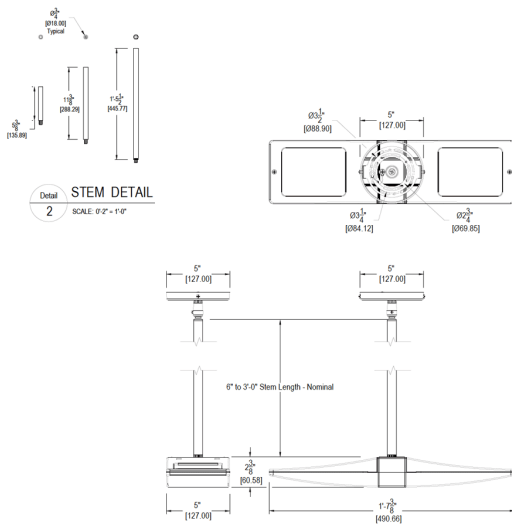
#### Driver:

Multi-chip 2x13W high output long life LED Driver  
 Constant Current, Class 2 100V - 277V, 50/60 Hz

#### Surge Protection:

4kV

## Dimensions



## Features

- Die cast aluminum lens frame with tempered glass and double gasketing
- Fully Shielded, Full Cutoff Optics
- LED Light Engine life delivers 70% of rated lumens at 100,000-hours