

Low profile, low glare. Edge-lit technology unlike any other.

Color: Gray

Weight: 13.1 lbs

Project:

Type:

Prepared By:

Date:

### Driver Info

|             |                  |
|-------------|------------------|
| Type        | Constant Current |
| 120V        | 0.33A            |
| 208V        | 0.19A            |
| 240V        | 0.17A            |
| 277V        | 0.14A            |
| Input Watts | 38.4W            |

### LED Info

|                |               |
|----------------|---------------|
| Watts          | 38W           |
| Color Temp     | 5000K (Cool)  |
| Color Accuracy | 74 CRI        |
| L70 Lifespan   | 100,000 Hours |
| Lumens         | 5,210 lm      |
| Efficacy       | 135.7 lm/W    |

## Technical Specifications

### Lightcloud

#### Lightcloud Controller Installed:

Fixture, Zone, and plug-load control from one powerful device. Capable of switching, 0-10V dimming, power monitoring. Can also be used to extend the range of the Lightcloud mesh network. Attach to fixture, junction box, or electrical panel. [Learn more about Lightcloud.](#)

### Compliance

#### UL Listed:

Suitable for wet locations

#### IESNA LM-79 & lm-80 Testing:

RAB LED luminaires have been tested by an independent laboratory in accordance with IESNA LM-79 and LM-80

#### Title 24 Compliant:

An IVELOT edge-lit area light can be used with a motion sensor or photocell control option to comply with 2016 Title 24 Part 6 Section 130.2 (a,b,v)

#### IP Rating:

Ingress protection rating of IP66 for dust and water

#### DLC Listed:

This product is listed by Design Lights Consortium (DLC) as an ultra-efficient premium product that qualifies for the highest tier of rebates from DLC Member Utilities. Designed to meet DLC 5.1 requirements.  
DLC Product Code: S-506FUS

### Electrical

#### Driver:

Class 2, 50/60Hz, 120-277V, 4kV standard, 10kV optional

#### Dimming Driver:

Driver includes dimming control wiring for 0-10V dimming systems. Requires separate 0-10V DC dimming circuit. Dims down to 10%.

#### THD:

9.13% at 120V, 19.84% at 277V

#### Power Factor:

98.8% at 120V, 90.2% at 277V

#### 7-Pin Receptacle:

ANSI C136.41 7-pin receptacle, compatible with wireless control systems

### Performance

#### Lifespan:

100,000-Hour LED lifespan based on IES LM-80 results and TM-21 calculations at 25°C

### LED Characteristics

#### LEDs:

Long-life, high-efficacy, surface-mount LEDs

#### Color Stability:

LED color temperature is warranted to shift no more than 200K in color temperature over a 5-year period

#### Color Uniformity:

RAB's range of Correlated Color Temperature follows the guidelines of the American National Standard for Specifications for the Chromaticity of Solid State Lighting (SSL) Products, ANSI C78.377-2017.

### Construction

#### Cold Weather Starting:

The minimum starting temperature is -40°C (-40°F)

#### Maximum Ambient Temperature:

Suitable for use in up to 40°C (104°F)

#### Housing:

Precision die-cast aluminum

#### IES Classification:

Type VS distributes light in a square symmetrical pattern and is meant for large, commercial parking lot lighting as well as areas where sufficient, evenly distributed light is necessary

## Technical Specifications (continued)

### Mounting:

2 3/8" slipfitter mount with stainless steel hardware

### Lens:

Diffused Polymethyl Methacrylate (PMMA)

### Effective Projected Area:

EPA = 0.61

### Finish:

Formulated for high durability and long-lasting color

### Green Technology:

Mercury and UV free. RoHS-compliant components.

### Optical

#### BUG Rating:

B3 U0 G3

### Other

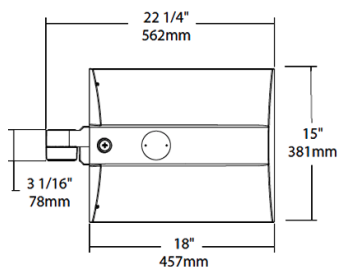
#### Warranty:

RAB warrants that our LED products will be free from defects in materials and workmanship for a period of five (5) years from the date of delivery to the end user, including coverage of light output, color stability, driver performance and fixture finish. RAB's warranty is subject to all terms and conditions found at [rablighting.com/warranty](http://rablighting.com/warranty).

#### Buy American Act Compliance:

RAB values USA manufacturing! Upon request, RAB may be able to manufacture this product to be compliant with the Buy American Act (BAA). Please contact customer service to request a quote for the product to be made BAA compliant.

## Dimensions



## Features

0-10V Dimming, standard

100,000-Hour LED lifespan

## Ordering Matrix

| Family | Distribution  |   | Lumen Output   | Mounting  | CRI/Color Temp  | Finish   | Voltage/Driver  | Sensor Options  | Lightcloud Option   |
|--------|---|---|--|---|---|--|---|---|---|
| IVA    | T5S   | - | 45L  | SF  | 750   | G  | U   | /7PR  | /LC   |
|        | T2 = Type II <sup>*</sup><br>T3 = Type III <sup>*</sup><br>T4 = Type IV <sup>*</sup><br>T5S = Type V Square <sup>*</sup><br>FT = Forward Throw <sup>*</sup> |   | 45L = 4,500lm (38W)<br>75L = 7,500lm (67W)<br>100L = 10,000lm (94W)<br>130L = 13,000lm (117W) <sup>1</sup> | PA = Universal Pole Mount<br>WM = Wall mount<br>SF = Slipfitter | 750 = 70CRI 5000K<br>740 = 70CRI 4000K<br>730 = 70CRI 3000K | Z = Bronze<br>W = White<br>G = Roadway Gray<br>K = Black | U = 120-277V 0-10V Dimming<br>H = 347-480V, 0-10V Dimming | Blank = No Options<br>/WS = 8ft lens Wattstopper<br>/WS2 = 20ft lens Wattstopper<br>/WS4 = 40ft lens Wattstopper<br>/7PR = 7-Pin receptacle | Blank = No Lightcloud®<br>/LC = Lightcloud® Controller <sup>2</sup> |

<sup>1</sup> Applies to Type IV, V Square

<sup>2</sup> Applies 120-277V

\* All values are nominal with +/- 10% tolerance. See spec sheet for more details.