



Low profile, low glare. Edge-lit technology unlike any other.

Color: Black                      Weight: 13.5 lbs

Project:	Type:
Prepared By:	Date:

Driver Info		LED Info	
Type	Constant Current	Watts	94W
120V	0.83A	Color Temp	5000K (Cool)
208V	0.48A	Color Accuracy	74 CRI
240V	0.42A	L70 Lifespan	100,000 Hours
277V	0.36A	Lumens	11,577 lm
Input Watts	97W	Efficacy	119.4 lm/W

Technical Specifications

**Lightcloud**

**Lightcloud Controller Installed:**  
Fixture, Zone, and plug-load control from one powerful device. Capable of switching, 0-10V dimming, power monitoring. Can also be used to extend the range of the Lightcloud mesh network. Attach to fixture, junction box, or electrical panel. [Learn more at www.lightcloud.com](#)

**Compliance**

**UL Listed:**  
Suitable for wet locations

**IESNA LM-79 & LM-80 Testing:**  
RAB LED luminaires have been tested by an independent laboratory in accordance with IESNA lm-79 and lm-80

**IP Rating:**  
Ingress protection rating of IP66 for dust and water

**California Title 24:**  
Can be used to conform with the requirements of California Title 24 Part 6.

**DLC Listed:**  
This product is listed by Design Lights Consortium (DLC) as an ultra-efficient premium product that qualifies for the highest tier of rebates from DLC Member Utilities. Designed to meet DLC 5.1 requirements.  
DLC Product Code: S-M8IVLU

**Electrical**

**Driver:**  
Class 2, 50/60Hz, 120-277V, 4kV standard, 10kV optional

**Dimming Driver:**  
Driver includes dimming control wiring for 0-10V dimming systems. Requires separate 0-10V DC dimming circuit. Dims down to 10%.

**THD:**  
4.7% at 120V, 8.5% at 277V

**Power Factor:**  
99.8% at 120V, 96.9% at 277V

**Performance**

**Lifespan:**  
100,000-Hour LED lifespan based on IES LM-80 results and TM-21 calculations at 25°C

**LED Characteristics**

**LEDs:**  
Long-life, high-efficacy, surface-mount LEDs

**Color Stability:**  
LED color temperature is warrantied to shift no more than 200K in color temperature over a 5-year period

**Color Uniformity:**  
RAB's range of Correlated Color Temperature follows the guidelines of the American National Standard for Specifications for the Chromaticity of Solid State Lighting (SSL) Products, ANSI C78.377-2017.

**Construction**

**Cold Weather Starting:**  
The minimum starting temperature is -40°C (-40°F)

**Maximum Ambient Temperature:**  
Suitable for use in up to 40°C (104°F)

**Housing:**  
Precision die-cast aluminum

**IES Classification:**  
Type VS distributes light in a square symmetrical pattern and is meant for large, commercial parking lot lighting as well as areas where sufficient, evenly distributed light is necessary

**Lens:**  
Diffused Polymethyl Methacrylate (PMMA)

## Technical Specifications (continued)

### Effective Projected Area:

EPA = 0.61

### Finish:

Formulated for high durability and long-lasting color

### Green Technology:

Mercury and UV free. RoHS-compliant components.

### Sensor Settings

#### Multi Level Motion Sensor:

\*40 ft diameter coverage from 20 ft height.

### Installation

#### Mounting:

2 3/8" slipfitter mount with stainless steel hardware

### Other

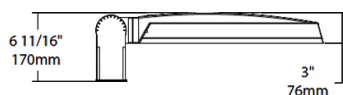
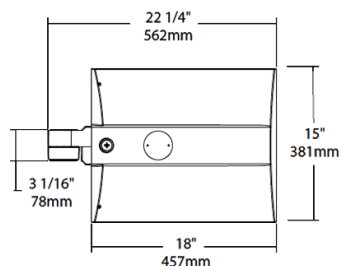
#### Warranty:

RAB warrants that our LED products will be free from defects in materials and workmanship for a period of five (5) years from the date of delivery to the end user, including coverage of light output, color stability, driver performance and fixture finish. RAB's warranty is subject to all terms and conditions found at [rablighting.com/warranty](http://rablighting.com/warranty).

#### Buy American Act Compliance:

RAB values USA manufacturing! Upon request, RAB may be able to manufacture this product to be compliant with the Buy American Act (BAA). Please contact customer service to request a quote for the product to be made BAA compliant.

## Dimensions



## Features

0-10V Dimming, standard

100,000-Hour LED lifespan

Ordering Matrix									
Family	Distribution		Lumen Output	Mounting	CRI/Color Temp	Finish	Driver	Sensor Options	Lightcloud Option
IVA	T5S	–	100L	SF	750	K	U	/WS2	/LC
	T3 = Type III T4 = Type IV T5S = Type V Square FT = Forward Throw T2 = Type II		45L = 4,500lm (38W) 75L = 7,500lm (67W) 100L = 10,000lm (94W) 130L = 13,000lm (117W)	PA = Universal Pole Mount WM = Wall mount SF = Slipfitter	730 = 70CRI 3000K 740 = 70CRI 4000K 750 = 70CRI 5000K	Z = Bronze W = White G = Roadway Gray K = Black	U = 120-277V 0-10V Dimming H = 347-480V, 0-10V Dimming	Blank = No Options /WS = 8ft lens Wattstopper /WS2 = 20ft lens Wattstopper /WS4 = 40ft lens Wattstopper /7PR = 7-Pin receptacle	Blank = No Lightcloud® /LC = Lightcloud