

Low profile, low glare. Edge-lit technology unlike any other.

Color: Bronze Weight: 13.5 lbs

Project:	Type:
Prepared By:	Date:

Driver Info		LED Info	
Type	Constant Current	Watts	94W
120V	0.83A	Color Temp	3000K (Warm)
208V	0.48A	Color Accuracy	83 CRI
240V	0.42A	L70 Lifespan	100,000 Hours
277V	0.36A	Lumens	10,032 lm
Input Watts	94.5W	Efficacy	106.2 lm/W

Technical Specifications

Lightcloud

Lightcloud Controller Installed:
Fixture, Zone, and plug-load control from one powerful device. Capable of switching, 0-10V dimming, power monitoring. Can also be used to extend the range of the Lightcloud mesh network. Attach to fixture, junction box, or electrical panel. [Learn more at www.lightcloud.com](#)

Compliance

UL Listed:
Suitable for wet locations

IESNA LM-79 & LM-80 Testing:
RAB LED luminaires have been tested by an independent laboratory in accordance with IESNA lm-79 and lm-80

IP Rating:
Ingress protection rating of IP66 for dust and water

California Title 24:
Can be used to conform with the requirements of California Title 24 Part 6.

DLC Listed:
This product is on the Design Lights Consortium (DLC) Qualified Products List and is eligible for rebates from DLC Member Utilities. Designed to meet DLC 5.1 requirements.
DLC Product Code: S-52YEIU

Electrical
Driver:
Class 2, 50/60Hz, 120-277V, 4kV standard, 10kV optional

Dimming Driver:
Driver includes dimming control wiring for 0-10V dimming systems. Requires separate 0-10V DC dimming circuit. Dims down to 10%.

THD:
5.1% at 120V, 29.3% at 277V

Power Factor:
99.8% at 120V, 96.4% at 277V

Performance
Lifespan:
100,000-Hour LED lifespan based on IES LM-80 results and TM-21 calculations at 25°C

LED Characteristics
LEDs:
Long-life, high-efficacy, surface-mount LEDs

Color Stability:
LED color temperature is warrantied to shift no more than 200K in color temperature over a 5-year period

Color Uniformity:
RAB's range of Correlated Color Temperature follows the guidelines of the American National Standard for Specifications for the Chromaticity of Solid State Lighting (SSL) Products, ANSI C78.377-2017.

Construction
Cold Weather Starting:
The minimum starting temperature is -40°C (-40°F)

Maximum Ambient Temperature:
Suitable for use in up to 40°C (104°F)

Housing:
Precision die-cast aluminum

IES Classification:
Type VS distributes light in a square symmetrical pattern and is meant for large, commercial parking lot lighting as well as areas where sufficient, evenly distributed light is necessary

Lens:
Diffused Polymethyl Methacrylate (PMMA)

Technical Specifications (continued)

Effective Projected Area:

EPA = 0.61

Finish:

Formulated for high durability and long-lasting color

Green Technology:

Mercury and UV free. RoHS-compliant components.

Sensor Settings

Multi Level Motion Sensor:

*100 ft diameter maximum coverage from 40 ft height.

Installation

Mounting:

2 3/8" slipfitter mount with stainless steel hardware

Other

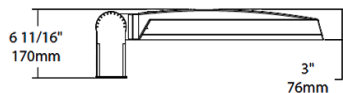
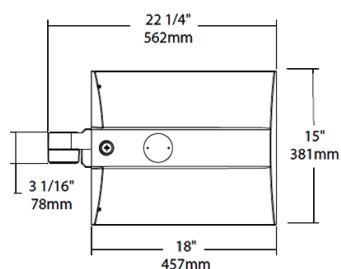
Warranty:

RAB warrants that our LED products will be free from defects in materials and workmanship for a period of five (5) years from the date of delivery to the end user, including coverage of light output, color stability, driver performance and fixture finish. RAB's warranty is subject to all terms and conditions found at rablighting.com/warranty.

Buy American Act Compliance:

RAB values USA manufacturing! Upon request, RAB may be able to manufacture this product to be compliant with the Buy American Act (BAA). Please contact customer service to request a quote for the product to be made BAA compliant.

Dimensions



Features

0-10V Dimming, standard

100,000-Hour LED lifespan

Ordering Matrix

Family	Distribution		Lumen Output	Mounting	CRI/Color Temp	Finish	Driver	Sensor Options	Lightcloud Option
IVA	T5S	-	100L	SF	730	Z	U	/WS4	/LC
	T3 = Type III T4 = Type IV T5S = Type V Square FT = Forward Throw T2 = Type II		45L = 4,500lm (38W) 75L = 7,500lm (67W) 100L = 10,000lm (94W) 130L = 13,000lm (117W)	PA = Universal Pole Mount WM = Wall mount SF = Slipfitter	730 = 70CRI 3000K 740 = 70CRI 4000K 750 = 70CRI 5000K	Z = Bronze W = White G = Roadway Gray K = Black	U = 120-277V 0-10V Dimming H = 347-480V, 0-10V Dimming	Blank = No Options /WS = 8ft lens Wattstopper /WS2 = 20ft lens Wattstopper /WS4 = 40ft lens Wattstopper /7PR = 7-Pin receptacle	Blank = No Lightcloud® /LC = Lightcloud