



Low profile, low glare. Edge-lit technology unlike any other.

Color: Black

Weight: 13.5 lbs

**Project:**

**Type:**

**Prepared By:**

**Date:**

### Driver Info

|             |                  |
|-------------|------------------|
| Type        | Constant Current |
| 120V        | N/A              |
| 208V        | N/A              |
| 240V        | N/A              |
| 277V        | N/A              |
| Input Watts | 93.8W            |

### LED Info

|                |               |
|----------------|---------------|
| Watts          | 94W           |
| Color Temp     | 3000K (Warm)  |
| Color Accuracy | 82 CRI        |
| L70 Lifespan   | 100,000 Hours |
| Lumens         | 10,089 lm     |
| Efficacy       | 107.6 lm/W    |

## Technical Specifications

### Compliance

#### UL Listed:

Suitable for wet locations

#### IESNA LM-79 & lm-80 Testing:

RAB LED luminaires have been tested by an independent laboratory in accordance with IESNA lm-79 and lm-80

#### IP Rating:

Ingress protection rating of IP66 for dust and water

#### California Title 24:

Can be used to conform with the requirements of California Title 24 Part 6.

#### DLC Listed:

This product is on the Design Lights Consortium (DLC) Qualified Products List and is eligible for rebates from DLC Member Utilities. Designed to meet DLC 5.1 requirements.  
DLC Product Code: S-UKE069

### Electrical

#### Driver:

Class 2, 50/60Hz, 480V 4kV standard, 10kV optional

#### Dimming Driver:

Driver includes dimming control wiring for 0-10V dimming systems. Requires separate 0-10V DC dimming circuit. Dims down to 10%.

#### THD:

14.4% at 480V

#### Power Factor:

94.9% at 480V

### Performance

#### Lifespan:

100,000-Hour LED lifespan based on IES LM-80 results and TM-21 calculations at 25°C

### LED Characteristics

#### LEDs:

Long-life, high-efficacy, surface-mount LEDs

#### Color Stability:

LED color temperature is warranted to shift no more than 200K in color temperature over a 5-year period

#### Color Uniformity:

RAB's range of Correlated Color Temperature follows the guidelines of the American National Standard for Specifications for the Chromaticity of Solid State Lighting (SSL) Products, ANSI C78.377-2017.

### Construction

#### Cold Weather Starting:

The minimum starting temperature is -40°C (-40°F)

#### Maximum Ambient Temperature:

Suitable for use in up to 40°C (104°F)

#### Housing:

Precision die-cast aluminum

#### IES Classification:

Type VS distributes light in a square symmetrical pattern and is meant for large, commercial parking lot lighting as well as areas where sufficient, evenly distributed light is necessary

#### Mounting:

2 3/8" slipfitter mount with stainless steel hardware

#### Lens:

Diffused Polymethyl Methacrylate (PMMA)

#### Effective Projected Area:

EPA = 0.61

#### Finish:

Formulated for high durability and long-lasting color

## Technical Specifications (continued)

### Green Technology:

Mercury and UV free. RoHS-compliant components.

### Sensor Specifications

#### Multi Level Motion Sensor:

\*48 ft diameter maximum coverage from 8 ft height.

### Optical

#### BUG Rating:

B3 U0 G2

### Other

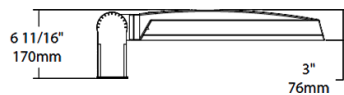
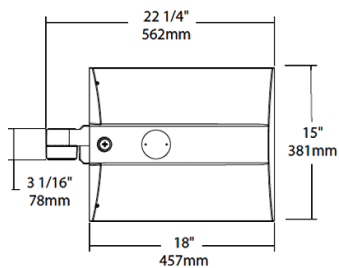
#### Warranty:

RAB warrants that our LED products will be free from defects in materials and workmanship for a period of five (5) years from the date of delivery to the end user, including coverage of light output, color stability, driver performance and fixture finish. RAB's warranty is subject to all terms and conditions found at [rablighting.com/warranty](http://rablighting.com/warranty).

#### Buy American Act Compliance:

RAB values USA manufacturing! Upon request, RAB may be able to manufacture this product to be compliant with the Buy American Act (BAA). Please contact customer service to request a quote for the product to be made BAA compliant.

## Dimensions



## Features

0-10V Dimming, standard

100,000-Hour LED lifespan

Ordering Matrix

| Family | Distribution   |   | Lumen Output  | Mounting  | CRI/Color Temp  | Finish   | Voltage/Driver  | Sensor Options  | Lightcloud Option                                      |
|--------|--|---|---|---|---|--|---|---|--|
| IVA    | T5S  | - | 100L  | SF  | 730   | K  | H   | /WS   |  |
|        | T2 = Type II<br>T3 = Type III<br>T4 = Type IV<br>T5S = Type V Square<br>FT = Forward Throw |   | 45L = 4,500lm (38W)<br>75L = 7,500lm (67W)<br>100L = 10,000lm (94W)<br>130L = 13,000lm (117W) | PA = Universal Pole Mount<br>WM = Wall mount<br>SF = Slipfitter | 750 = 70CRI 5000K<br>740 = 70CRI 4000K<br>730 = 70CRI 3000K | Z = Bronze<br>W = White<br>G = Roadway Gray<br>K = Black | U = 120-277V 0-10V Dimming<br>H = 347-480V, 0-10V Dimming | Blank = No Options<br>/WS = 8ft lens Wattstopper<br>/WS2 = 20ft lens Wattstopper<br>/WS4 = 40ft lens Wattstopper<br>/7PR = 7-Pin receptacle | Blank = No Lightcloud®<br>/LC = Lightcloud® Controller |