



Date:

Watts	94W
Color Temp	5000K (Cool)
Color Accuracy	74 CRI
L70 Lifespan	100,000 Hours
Lumens	11,577 lm
Efficacy	119.4 lm/W

Diffused Polymethyl Methacrylate (PMMA)

Technical Specifications (continued)**Effective Projected Area:**

EPA = 0.61

Finish:

Formulated for high durability and long-lasting color

Green Technology:

Mercury and UV free. RoHS-compliant components.

Sensor Settings**Multi Level Motion Sensor:**

*40 ft diameter coverage from 20 ft height.

Installation**Mounting:**

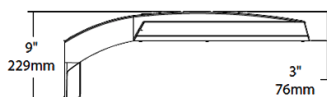
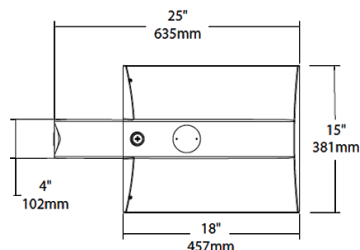
Universal pole adapter

Other**Warranty:**

RAB warrants that our LED products will be free from defects in materials and workmanship for a period of five (5) years from the date of delivery to the end user, including coverage of light output, color stability, driver performance and fixture finish. RAB's warranty is subject to all terms and conditions found at rablighting.com/warranty.

Buy American Act Compliance:

RAB values USA manufacturing! Upon request, RAB may be able to manufacture this product to be compliant with the Buy American Act (BAA). Please contact customer service to request a quote for the product to be made BAA compliant.

Dimensions**Features**

0-10V Dimming, standard

100,000-Hour LED lifespan

Ordering Matrix

Family	Distribution		Lumen Output	Mounting	CRI/Color Temp	Finish	Driver	Sensor Options	Lightcloud Option
IVA	T5S	-	100L	PA	750	Z	U	/WS2	/LC
	T3 = Type III T4 = Type IV T5S = Type V Square FT = Forward Throw T2 = Type II		45L = 4,500lm (38W) 75L = 7,500lm (67W) 100L = 10,000lm (94W) 130L = 13,000lm (117W)	PA = Universal Pole Mount WM = Wall mount SF = Slipfitter	730 = 70CRI 3000K 740 = 70CRI 4000K 750 = 70CRI 5000K	Z = Bronze W = White G = Roadway Gray K = Black	U = 120-277V 0-10V Dimming H = 347-480V, 0-10V Dimming	Blank = No Options /WS = 8ft lens Wattstopper /WS2 = 20ft lens Wattstopper /WS4 = 40ft lens Wattstopper /7PR = 7-Pin receptacle	Blank = No Lightcloud® /LC = Lightcloud