



Low profile, low glare. Edge-lit technology unlike any other.

Color: Black

Weight: 19.4 lbs

**Project:**

**Type:**

**Prepared By:**

**Date:**

### Driver Info

|             |                  |
|-------------|------------------|
| Type        | Constant Current |
| 120V        | 0.33A            |
| 208V        | 0.19A            |
| 240V        | 0.17A            |
| 277V        | 0.14A            |
| Input Watts | 38.9W            |

### LED Info

|                |               |
|----------------|---------------|
| Watts          | 38W           |
| Color Temp     | 5000K (Cool)  |
| Color Accuracy | 74 CRI        |
| L70 Lifespan   | 100,000 Hours |
| Lumens         | 4,928 lm      |
| Efficacy       | 126.7 lm/W    |

## Technical Specifications

### Compliance

#### UL Listed:

Suitable for wet locations

#### IESNA LM-79 & lm-80 Testing:

RAB LED luminaires have been tested by an independent laboratory in accordance with IESNA lm-79 and lm-80

#### IP Rating:

Ingress protection rating of IP66 for dust and water

#### California Title 24:

Can be used to conform with the requirements of California Title 24 Part 6.

#### DLC Listed:

This product is listed by Design Lights Consortium (DLC) as an ultra-efficient premium product that qualifies for the highest tier of rebates from DLC Member Utilities. Designed to meet DLC 5.1 requirements.

DLC Product Code: S-41HNG8

### Electrical

#### Driver:

Class 2, 50/60Hz, 120-277V, 4kV standard, 10kV optional

#### Dimming Driver:

Driver includes dimming control wiring for 0-10V dimming systems. Requires separate 0-10V DC dimming circuit. Dims down to 10%.

#### THD:

8.58% at 120V, 17.28% at 277V

#### Power Factor:

98.9% at 120V, 91.3% at 277V

### Performance

#### Lifespan:

100,000-Hour LED lifespan based on IES LM-80 results and TM-21 calculations at 25°C

### LED Characteristics

#### LEDs:

Long-life, high-efficacy, surface-mount LEDs

#### Color Stability:

LED color temperature is warranted to shift no more than 200K in color temperature over a 5-year period

#### Color Uniformity:

RAB's range of Correlated Color Temperature follows the guidelines of the American National Standard for Specifications for the Chromaticity of Solid State Lighting (SSL) Products, ANSI C78.377-2017.

### Construction

#### Cold Weather Starting:

The minimum starting temperature is -40°C (-40°F)

#### Maximum Ambient Temperature:

Suitable for use in up to 40°C (104°F)

#### Housing:

Precision die-cast aluminum

#### IES Classification:

The Forward Throw distribution is especially suited for mounting on the sides of buildings and walls, and for illuminating the perimeter of parking areas. It produces a semicircular distribution with essentially the same candlepower at lateral angles from 90° to 270°.

#### Lens:

Diffused Polymethyl Methacrylate (PMMA)

#### Effective Projected Area:

EPA = 0.61

#### Finish:

Formulated for high durability and long-lasting color

#### Green Technology:

Mercury and UV free. RoHS-compliant components.

**Technical Specifications (continued)**

**Sensor Specifications**

**Multi Level Motion Sensor:**

\*40 ft diameter coverage from 20 ft height.

**Handheld Wireless Configuration Tool:**

Adjust settings using handheld wireless configuration tool (catalog# WSREM). Only available with 0-10V dimming driver options. [Handheld wireless configuration tool available here.](#)

**Installation**

**Mounting:**

Wall mount

**Optical**

**BUG Rating:**

B1 U0 G2

**Other**

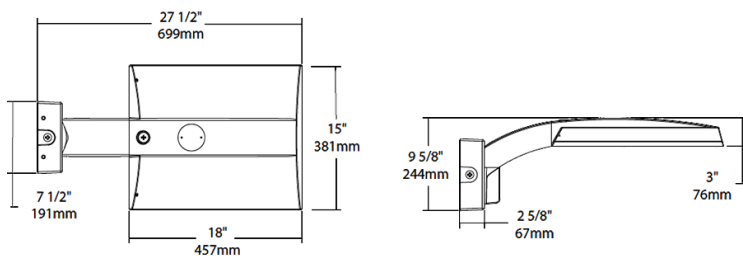
**Warranty:**

RAB warrants that our LED products will be free from defects in materials and workmanship for a period of five (5) years from the date of delivery to the end user, including coverage of light output, color stability, driver performance and fixture finish. RAB's warranty is subject to all terms and conditions found at [rablighting.com/warranty](http://rablighting.com/warranty).

**Buy American Act Compliance:**

RAB values USA manufacturing! Upon request, RAB may be able to manufacture this product to be compliant with the Buy American Act (BAA). Please contact customer service to request a quote for the product to be made BAA compliant.

**Dimensions**



**Features**

- 0-10V Dimming, standard
- 100,000-Hour LED lifespan

Ordering Matrix

| Family | Distribution  |   | Lumen Output   | Mounting  | CRI/Color Temp  | Finish   | Voltage/Driver  | Sensor Options  | Lightcloud Option   |
|--------|---|---|--|---|---|--|---|---|---|
| IVA    | FT  | - | 45L  | WM  | 750   | K  | U   | /WS2  |   |
|        | T2 = Type II <sup>1</sup><br>T3 = Type III <sup>1</sup><br>T4 = Type IV <sup>1</sup><br>T5S = Type V Square <sup>1</sup><br>FT = Forward Throw <sup>1</sup> |   | 45L = 4,500lm (38W)<br>75L = 7,500lm (67W)<br>100L = 10,000lm (94W)<br>130L = 13,000lm (117W) <sup>1</sup> | PA = Universal Pole Mount<br>WM = Wall mount<br>SF = Slipfitter | 750 = 70CRI 5000K<br>740 = 70CRI 4000K<br>730 = 70CRI 3000K | Z = Bronze<br>W = White<br>G = Roadway Gray<br>K = Black | U = 120-277V 0-10V Dimming<br>H = 347-480V, 0-10V Dimming | Blank = No Options<br>/WS = 8ft lens Wattstopper<br>/WS2 = 20ft lens Wattstopper<br>/WS4 = 40ft lens Wattstopper<br>/7PR = 7-Pin receptacle | Blank = No Lightcloud®<br>/LC = Lightcloud® Controller <sup>2</sup> |

<sup>1</sup> Applies to Type IV, V Square

<sup>2</sup> Applies 120-277V

\* All values are nominal with +/- 10% tolerance. See spec sheet for more details.