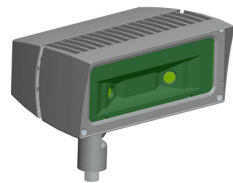


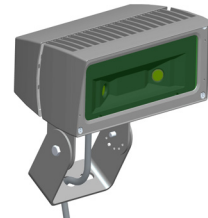
HAZFFLED INSTALLATION INSTRUCTIONS



Thank you for buying RAB lighting fixtures. Our goal is to design the best quality products to get the job done right. We'd like to hear your comments. Call the Marketing Department at 888-RAB-1000 or email: marketing@rabweb.com



HAZFFLED Arm



HAZFFLED Trunnion

IMPORTANT

READ CAREFULLY BEFORE INSTALLING FIXTURE. RETAIN THESE INSTRUCTIONS FOR FUTURE REFERENCE.

RAB fixtures must be wired in accordance with the National Electrical Code and all applicable local codes. Proper grounding is required for safety. For fixtures weighing more than 10 lbs - Do not mount to an outlet cover unless a separate splice box is used. THIS PRODUCT MUST BE INSTALLED IN ACCORDANCE WITH THE APPLICABLE INSTALLATION CODE BY A PERSON FAMILIAR WITH THE CONSTRUCTION AND OPERATION OF THE PRODUCT AND THE HAZARDS INVOLVED.

WARNING: Make certain power is OFF before installing or maintaining fixture. No user serviceable parts inside.

SAFETY INSTRUCTIONS

CAUTION: TO REDUCE THE RISK OF IGNITION OF HAZARDOUS ATMOSPHERES DISCONNECT THE LUMINAIRE FROM SUPPLY CIRCUIT BEFORE OPENING. KEEP TIGHTLY CLOSED WHEN IN OPERATION.

SUITABLE FOR USE IN THE FOLLOWING HAZARDOUS AREAS AS DEFINED BY THE NATIONAL ELECTRIC CODE: CLASS I DIV.2 GROUP A, B, C, D. SUITABLE FOR WET LOCATIONS. SUITABLE FOR MOUNTING WITHIN 1.2M (4FT) OF THE GROUND.

WARNING: FOR 26W UNITS DO NOT EXCEED OPERATING TEMPERATURES OF 120°C (248°F) AND AMBIENT TEMPERATURE OF 40°C (104°F).

WARNING: FOR 39W AND 52W UNITS DO NOT EXCEED OPERATING TEMPERATURES OF 135°C (275°F) AND AMBIENT TEMPERATURES ABOVE 40°C (104°F).

WARNING: USE PROPER SUPPLY WIRING AS SPECIFIED ON THE LUMINAIRE.

ARM MOUNTING

1. Seal arm thread using teflon tape or silicone sealant.
2. Secure the LED Flood to a 1/2" NPS hole in a junction box or landscape post. Heavy duty XC1 cover provided.
3. Plug all unused holes and seal threads with silicone.
4. The swivel arm on the LED Flood allows 180° of vertical aiming adjustment depending on mounting location.

CLEANING & MAINTENANCE

CAUTION: Be sure fixture temperature is cool enough to touch. Do not clean or maintain while fixture is energized.

1. Clean glass lens with non-abrasive glass cleaning solution.
2. Do not open the fixture to clean the LED. Do not touch the LED.

TROUBLESHOOTING

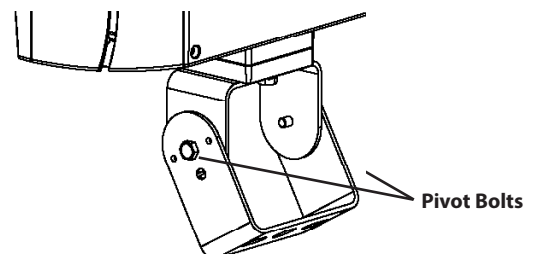
1. Check that the line voltage at the fixture is correct. Refer to wiring directions.
2. Is the fixture grounded properly?
3. Is the photocell, if used, functioning properly?

TRUNNION MOUNTING

CAUTION: UL and C-UL listed or CSA certified liquid tight cord grip suitable for use with three conductor type STW flexible cord shall be used for connection to a wet location outlet box provided by others.

To adjust the angle of the fixture using the trunnion:

1. Loosen the Pivot Bolts & angle locking screw.
2. Adjust fixture to desired angle.
3. Tighten **Pivot Bolts** & angle locking screw.



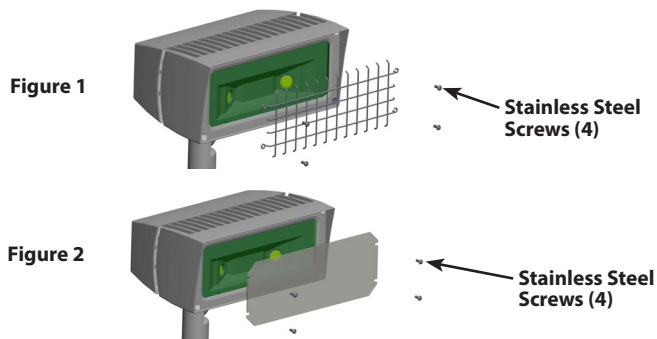
HAZZFLED INSTALLATION INSTRUCTIONS

Thank you for buying RAB lighting fixtures. Our goal is to design the best quality products to get the job done right. We'd like to hear your comments. Call the Marketing Department at 888-RAB-1000 or email: marketing@rabweb.com

GUARD OR SHIELD INSTALLATION

Wire Guard and Poly Shield mount with (4) #8-32 **Stainless Steel Screws**. Screws are provided with accessory. Guard and Shield may be used together. See figure 1 for Guard. See figure 2 for Shield

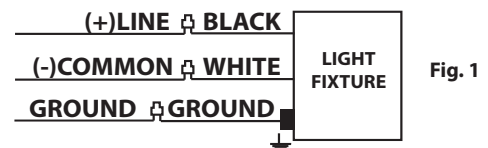
1. Line up guard with pre-existing, pre-drilled holes in frame as shown, tighten screws.



ON-OFF WIRING

Universal voltage driver permits operation at 120V to 277VAC, 50 or 60Hz. Units ordered with (/480V) suffix are 480V. Follow the wiring directions as in fig. 1.

1. Connect the black fixture lead to the (+) LINE supply lead.
2. Connect the white fixture lead to the (-) COMMON supply lead.
3. Connect the bare copper Ground wire from fixture to supply ground.



ACCESSORIES AND REPLACEMENT PARTS

Chrome Wire Guard:	GDFFL39W
Poly Shield:	GDFFL39P

Patent - US: Pat D643,147

Note: These instructions do not cover all details or variations in equipment nor do they provide for every possible situation during installation, operation or maintenance.