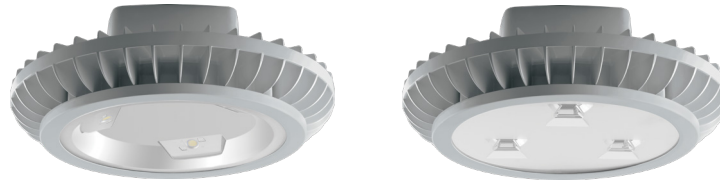


INSTRUCTIONS

HAZBAYLED® HAZAISLED INSTALLATION

RAB®

RAB Lighting is committed to creating high-quality, affordable, well-designed and energy-efficient LED lighting and controls that make it easy for electricians to install and end users to save energy. We'd love to hear your comments. Please call the Marketing Department at 888-RAB-1000 or email: marketing@rablighting.com



IMPORTANT

READ CAREFULLY BEFORE INSTALLING FIXTURE. RETAIN THESE INSTRUCTIONS FOR FUTURE REFERENCE.

RAB fixtures must be wired in accordance with the National Electrical Code and all applicable local codes. Proper grounding is required for safety. THIS PRODUCT MUST BE INSTALLED IN ACCORDANCE WITH THE APPLICABLE INSTALLATION CODE BY A PERSON FAMILIAR WITH THE CONSTRUCTION AND OPERATION OF THE PRODUCT AND THE HAZARDS INVOLVED.

WARNING: Make certain power is OFF before installing or maintaining fixture. No user serviceable parts inside.

WARNING: TO REDUCE THE RISK OF IGNITION OF HAZARDOUS ATMOSPHERES, DISCONNECT THE LUMINAIRE FROM SUPPLY CIRCUIT BEFORE OPENING. KEEP TIGHTLY CLOSED WHEN IN OPERATION.

WARNING: SUITABLE FOR USE IN THE FOLLOWING HAZARDOUS AREAS AS DEFINED BY THE NATIONAL ELECTRIC CODE: CLASS I DIV.2 GROUP A, B, C, D. SUITABLE FOR WET LOCATIONS WITH 3/4" PENDANT STEM.

WARNING: FOR 78W/104W UNITS, DO NOT EXCEED OPERATING TEMPERATURES OF 180°C (356°F) AND OPERATING TEMPERATURE CODE: T3A. MAXIMUM AMBIENT TEMPERATURE OF 40°C (104°F).

WARNING: MIN 90°C SUPPLY CONDUCTORS.

WARNING: SILICONE ALL PLUGS AND UNUSED CONDUIT ENTRIES FOR WEATHERPROOF SEALING.

PENDANT MOUNTING

Choose pendant length and appropriate junction box to mount the fixture as follows:

1. Unlatch and open the **Wiring Box**.
2. Thread **3/4" NPT Pendant Rod** (*not supplied*) onto the **Wiring Box**. Wrap Teflon tape or silicone gel onto the threads to prevent moisture from getting into the **Housing**.
3. Tighten **Set Screw** as shown in Fig. 1.
4. Feed supply wires through **Pendant Rod**. Make wiring connections in **Wiring Box** as shown in the wiring section with UL approved connectors as required by code.

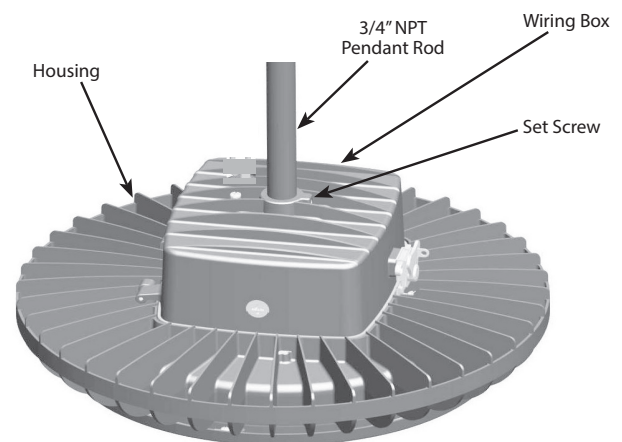


Fig: 1

ON/OFF WIRING

CAUTION: Make sure the supply voltage is the same as the luminaire voltage. Review Specification Label on product for electrical ratings.

Universal voltage driver permits operation at 120-277VAC, 50 or 60Hz. Follow wiring directions as shown in Fig. 2.

1. Connect the black fixture lead to the **LINE** supply lead.
2. Connect the white fixture lead to the **COMMON** supply lead.
3. Connect the **GROUND** wire from fixture to supply ground.

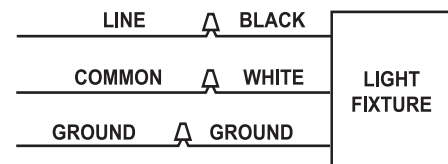


Fig: 2

INSTRUCTIONS

HAZBAYLED® HAZAISLED INSTALLATION

RAB®

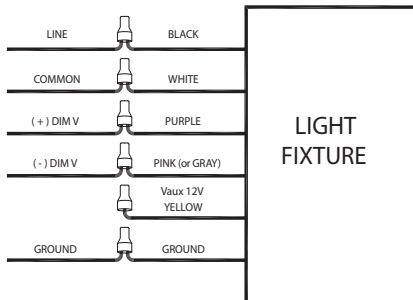
RAB Lighting is committed to creating high-quality, affordable, well-designed and energy-efficient LED lighting and controls that make it easy for electricians to install and end users to save energy. We'd love to hear your comments. Please call the Marketing Department at 888-RAB-1000 or email: marketing@rablighting.com

0-10V DIMMABLE WIRING

CAUTION: Make sure the supply voltage is the same as the luminaire voltage. Review Specification Label on product for electrical ratings. Universal voltage driver permits operation at 120-277VAC, 50 or 60Hz. For 0-10V Dimming follow the wiring directions as shown in Fig. 3.

1. Connect the black fixture lead to the (+) **LINE** supply lead.
2. Connect the white fixture lead to the (-) **COMMON** supply lead.
3. Connect the **GROUND** wire from fixture to supply ground. Do NOT connect the **GROUND** of the dimming fixture to the output.
4. Connect the purple fixture lead to the (V+) DIM lead.
5. Connect the pink (or gray) fixture lead to the (V-) DIM lead.
6. Cap the yellow fixture lead, if present. Do NOT connect.

Fig: 3



ACCESSORIES

Chrome Wire Guard: GDBAYLED78W
Poly Shield: GDBAYLED78P

GUARD OR SHIELD INSTALLATION

Wire Guard and Poly Shield mount with (4) #8-32 Stainless Steel Screws. Screws are provided with the accessory. See Fig. 4 for **Guard**, See Fig. 5 for **Shield**.

1. Line up **Guard** or **Shield** with existing pre-drilled holes in frame as shown, tighten **Screws**.

Fig: 4

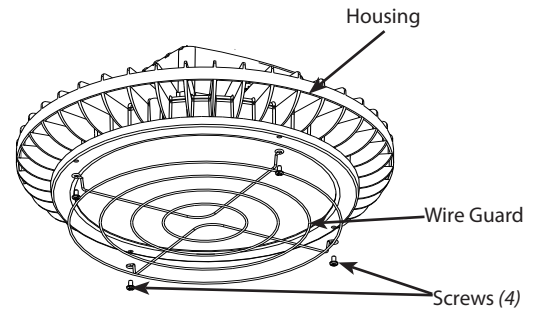
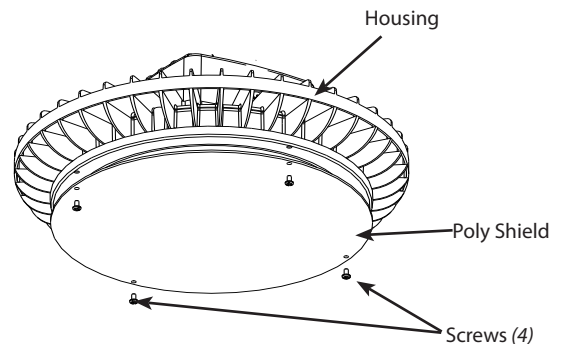


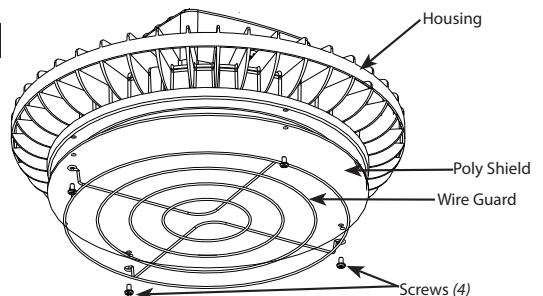
Fig: 5



GUARD AND SHIELD INSTALLATION

The **Wire Guard** and **Poly Shield** can be mounted on the same Fixture with (4) #8-32 **Screws** as shown in Fig. 6.

Fig: 6



Note: These instructions do not cover all details or variations in equipment nor do they provide for every possible situation during installation, operation or maintenance.

INSTRUCTIONS

HAZBAYLED® HAZAISLED INSTALLATION



RAB Lighting is committed to creating high-quality, affordable, well-designed and energy-efficient LED lighting and controls that make it easy for electricians to install and end users to save energy. We'd love to hear your comments. Please call the Marketing Department at 888-RAB-1000 or email: marketing@rablighting.com

CLEANING & MAINTENANCE

CAUTION: Be sure fixture temperature is cool enough to touch. Do not clean or maintain while fixture is energized.

1. Clean glass lens with non-abrasive glass cleaning solution.
2. Do not open the fixture to clean the LED. Do not touch the LED.
3. All gasket seals must be clean and undamaged.

TROUBLESHOOTING

1. Check that the line voltage at the fixture is correct. Refer to wiring directions.
2. Is the fixture grounded properly?



© 2022 RAB LIGHTING Inc.
HAZBAYLED-HAZAISLE
IN - 1121
73343-RAB

Easy Answers

rablighting.com
Visit our website for product info

Tech Help Line
Call our experts: 888 722-1000

e-mail
Answered promptly - sales@rablighting.com

Free Lighting Layouts
Answered online or by request

RAB WARRANTY: RAB's warranty is subject to all terms and conditions found at rablighting.com/warranty.