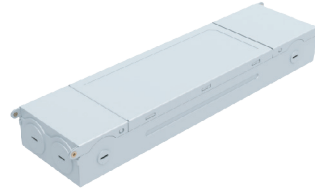


RAB Lighting is committed to creating high-quality, affordable, well-designed and energy-efficient LED lighting and controls that make it easy for electricians to install and end users to save energy. We'd love to hear your comments. Please call the Marketing Department at 888-RAB-1000 or email: marketing@rablighting.com

DAISYDRIVER/D10
DAISYDRIVER/TRIAC



IMPORTANT

READ CAREFULLY BEFORE INSTALLING FIXTURE. RETAIN THESE INSTRUCTIONS FOR FUTURE REFERENCE.

RAB fixture must be wired in accordance with the National Electrical Code and all applicable local codes. THIS PRODUCT MUST BE INSTALLED IN ACCORDANCE WITH THE APPLICABLE INSTALLATION CODE BY A PERSON FAMILIAR WITH THE CONSTRUCTION AND OPERATION OF THE PRODUCT AND THE HAZARDS INVOLVED.

TO PREVENT ELECTRICAL SHOCK, POWER SHOULD BE TURNED OFF AT THE FUSE BOX BEFORE INSTALLATION.

SAFETY WARNINGS:

Read all product labels and directions.

• **WARNING – Risk of fire or electric shock.**

• **Installation should be performed only by a qualified electrician in accordance with the National Electrical Code and relevant local codes. Do not make or alter any open holes in an enclosure of wiring or electrical components during kit installation.**

• **WARNING – To prevent wiring damage or abrasion, do not expose wiring to edges of sheet metal or other sharp objects.**

• **INSTALLATION SHOULD ONLY BE PERFORMED AFTER POWER TO THE FIXTURE HAS BEEN DISCONNECTED.**

• **The Tref max Tc value (Temperature Measurement Point) of the device is 90°C.**

• **This device complies with the requirements of CSA C22.2 No.250.13 (Clause 8.13) and ANSI C82.77-10.**

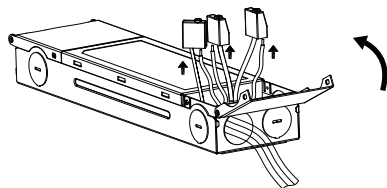
TOOLS NEEDED

This Daisy Chain Wafer requires very few tools for installation. A screwdriver and a pair of wirecutters will help to install.

INSTALLATION INSTRUCTIONS

1. Open the driver box and remove the knockout(s). Insert the electrical supply cable through the knockout and secure with a terminal. Wire driver box (Fig.1), white-white, black - black, green - green/ground.

Fig: 1



INSTALLATION INSTRUCTIONS (cont'd)

2. Wire nut the pink input wire with dim-, the purple input wire with dim+. If the yellow wire is not in use, cap it with wire nut. (Fig.2.1 for DAISYDRIVER/D10, Fig.2.2 for DAISYDRIVER/TRIAC)

Fig: 2.1

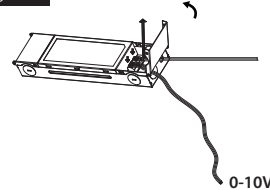
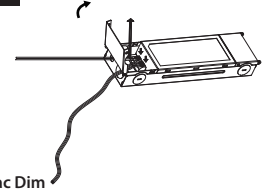
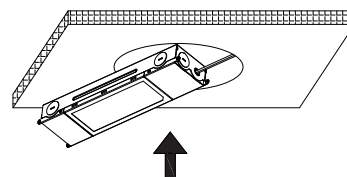


Fig: 2.2



3. Place the Power Supply thru the opening. (Fig.3)

Fig: 3



Note: These instructions do not cover all details or variations in equipment nor do they provide for every possible situation during installation, operation or maintenance.