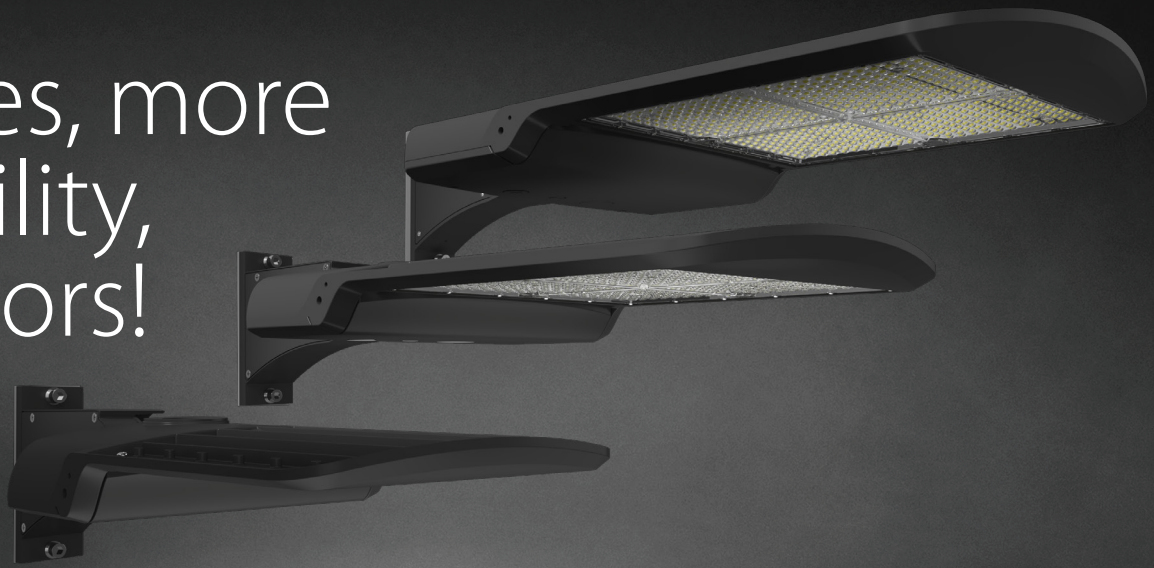




# More sizes, more adjustability, more colors!

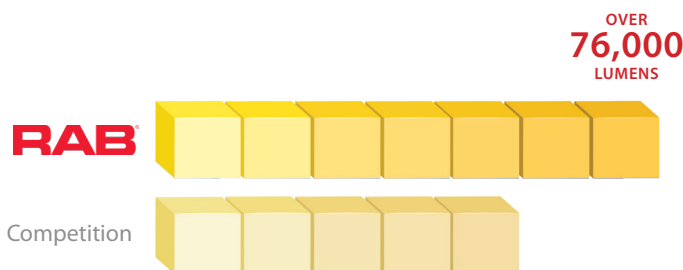
A17 economy area lights are now so much MORE.



Available from 50W through 480W models, and with four IES distributions and numerous control options, the A17 gives you the right light for the right application, all without breaking the budget.

## 7 Lumen Packages

The A17 is available in everything from 7,000 lumens to up to 76,300 lumens, while leading competitors only offer up to 5 lumen packages.



## Consistently High Efficacy

Not only does the A17 offer an ultra-high efficacy of up to 175 lm/W, but it delivers high efficacy throughout its entire portfolio.



## Mounting Flexibility

With several mounting options available, the A17 can be used throughout various areas for one unified look: parking lots, building façades, adjacent walkways, etc.



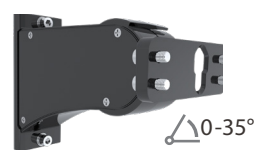
Comes standard with Universal Pole Mount



Wall Mount  
A17-WM



Slipfitter  
A17-SF-KIT-L  
A17-SF-KIT-S-M

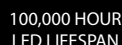


Adjustable Universal  
Pole Mount  
A17-ADJ-KIT-L  
A17-ADJ-KIT-S-M



Roadway Arm  
A17-RW ARM

### OPTIONAL MOUNTING ACCESSORIES



**IP65**  
BATING



## 5-YEAR, LIMITED WARRANTY

RAB's warranty is  
subject to all terms  
and conditions found at  
[rablighting.com/warranty](http://rablighting.com/warranty)

The XFU models of the A17 have three selectable features: 3 selectable wattages, 3 selectable color temperatures, and an on/off twistlock photocell, giving you 18 SKUs in one area light.

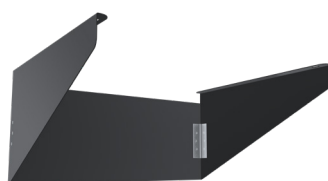


All A17 models are available with various control options and accessories to help qualify for additional utility rebates.

\* Remote control required for managing settings of the microwave sensor (A17 with MVS sensor only).



A17-RHS-S  
(up to 150W)



A17-RHS-M  
(200W to 300W)



A17-RHS-L  
(375W and up)

## Ordering Matrices

## A17

Family	Distribution*	Wattage	Mounting	Color Temp	Finish	Voltage Rating	Options
A17							
	3T Type III 4T Type IV 5T Type V	70 70/60/50W 100 100/80/60W 150 150/120/100W 200 200/180/160W 300 300/240/200W 375 375/300/240W 480 480/400/320W	Blank Universal Pole Mount SF Slipfitter (150W only)	Blank 3000/4000/5000K CCT Adjustable	Finish Bronze	Blank 120-277V /480 480V	No Option 3-Pin Receptacle & Shorting Cap 7-Pin Receptacle & Shorting Cap Microwave Motion Sensor Lightcloud Blue Enabled w/PIR Sensor Lightcloud Blue Enabled w/MVS Sensor
							/3PRS /7PRS /MVS /LCBS /LCBS/MVS

\*Type II distribution available as special order.

## A17XFU

Family	Wattage	Color Temperature	Finish	Voltage Rating	Options
A17XFU	150 300 150/100/70W 300/240/200W	Blank 3000/4000/5000K CCT Adjustable	Blank B W Bronze Black White	Blank 120-277V 0-10V Dimming	Blank 7-pin Receptacle & Shorting Cap 3-pin Twistlock photocell included /LC Lightcloud Controller /LCBS Lightcloud Blue Enabled w/PIR Sensor /LCBS/MVS Lightcloud Blue Enabled w/MVS Sensor

A17XFU comes standard with Adjustable Universal Pole Mount, 7-Pin Receptacle with Shorting Cap