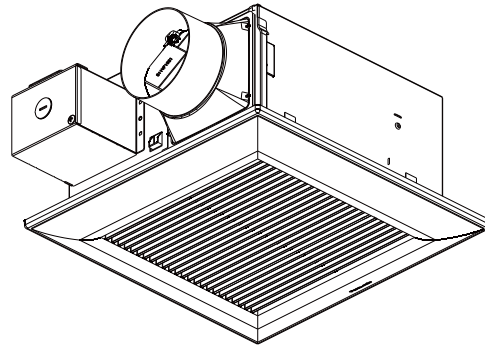


Service Manual

Ventilating Fan
(North America Market)



FV-0511VFC1

⚠ WARNING

This service information is designed for experienced repair technicians only and is not designed for use by the general public. It does not contain warnings or cautions to advise non-technical individuals of potential dangers in attempting to service a product. Products powered by electricity should be serviced or repaired only by experienced professional technicians. Any attempt to service or repair the product or products dealt with in this service information by anyone else could result in serious injury or death.

IMPORTANT SAFETY NOTICE

There are special components used in this equipment which are important for safety. These parts are marked by ⚠ in the Schematic Diagrams, Exploded Views and Replacement Parts List. It is essential that these critical parts should be replaced with manufacturer's specified parts to prevent shock, fire or other hazards. Do not modify the original design without the manufacturer's approval. Please have a static electricity depletion process in place before handling these components.. Please use gloves when handling PCB parts during the repair process..

| CONTENTS | PAGE |
|-----------------------------|-------|
| 1.Specification----- | 1 |
| 2.Parts Identification----- | 2 ~ 4 |
| 3.Wiring Diagram----- | 5 |
| 4.Parts List----- | 6 |

1. Specification

■ Specification for base Model fans

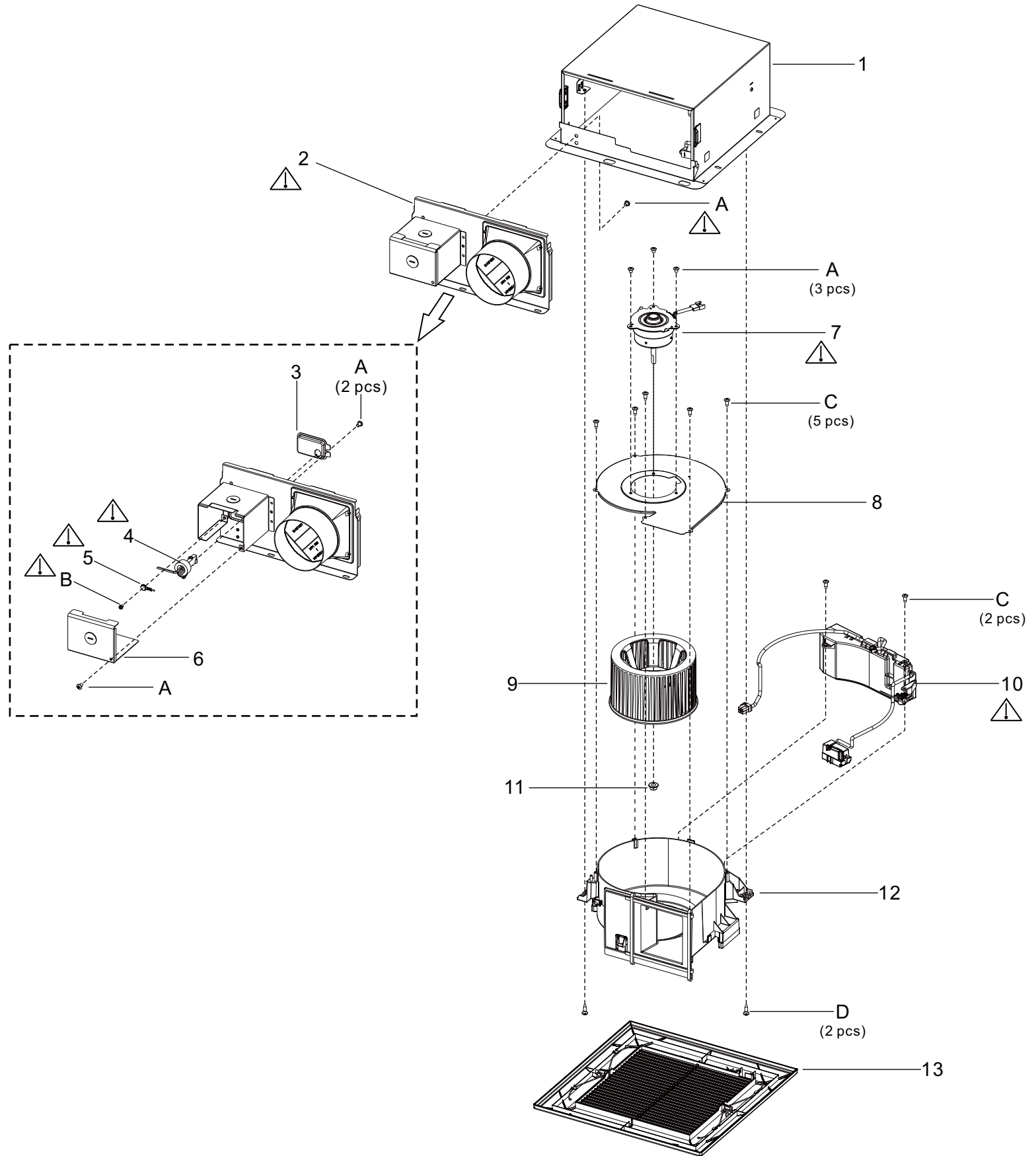
| Model No. | Air direction | Voltage (V) | Frequency (Hz) | Duct diameter (inches) | Air volume at 0.1"WG (CFM) | Noise (sones) | Speed (rpm) | Power (W) | Weight lb.(kg) |
|-------------|---------------|-------------|----------------|------------------------|----------------------------|---------------|-------------|-----------|-----------------|
| FV-0511VFC1 | Exhaust | 120 | 60 | 4 | 50 | <0.3 | 795 | 4.0 | 9.5(4.3) |
| | | | | | 80 | 0.3 | 820 | 5.9 | |
| | | | | | 110 | 0.8 | 977 | 10.2 | |

HVI Certified performance based on HVI Procedures 915, 916, and 920.

2. Parts Identification

FV-0511VFC1

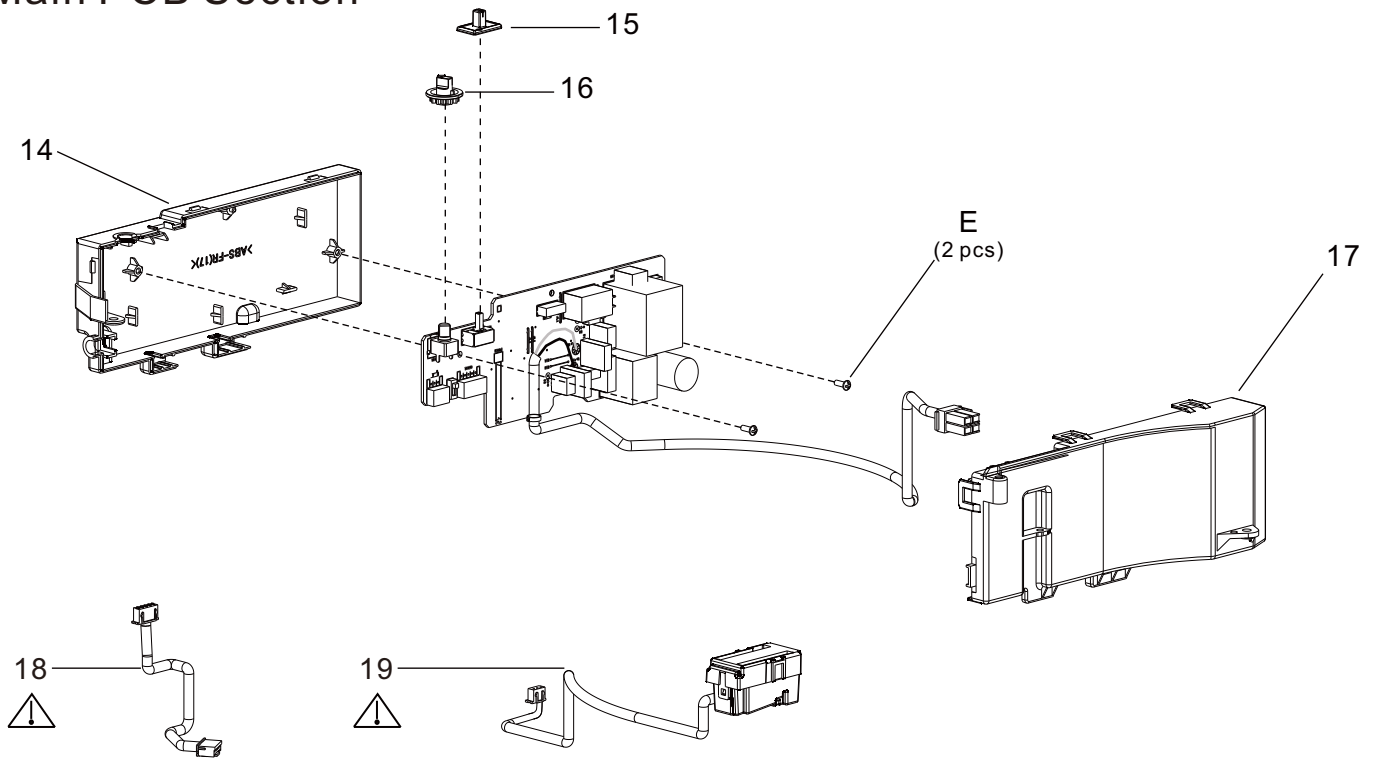
Main Body Section



2.Parts Identification

FV-0511VFC1

Main PCB Section



Main Label

Secure screw tightly for ground continuity
 Vissez fermement pour la continuité de la mise à la terre

20



23

Panasonic Ventilating Fan/Ventilateur

Model No. FV-0511VFC1
 AC 120 V 60 Hz
 0.28 A Ser.No. []

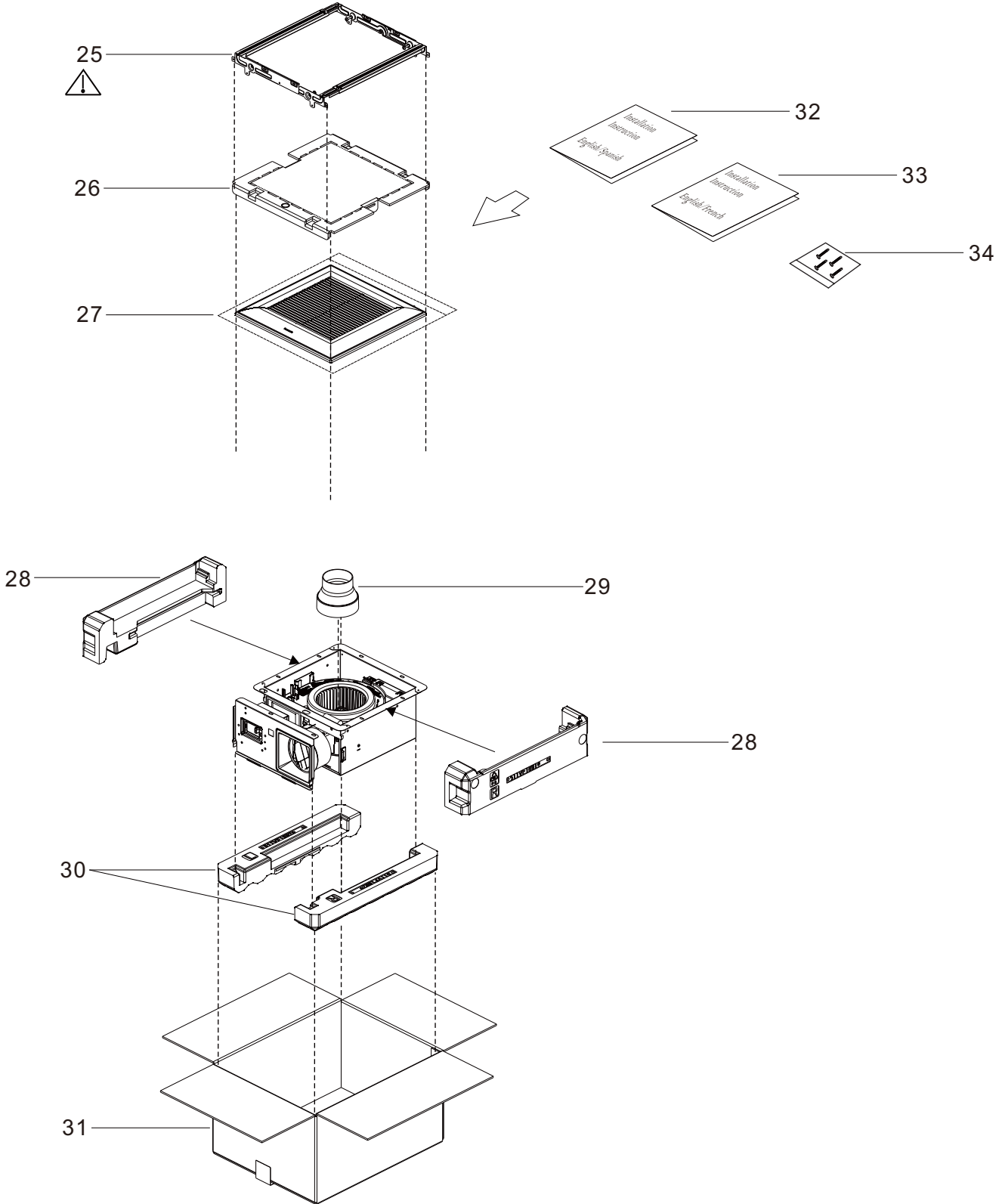
Panasonic Corporation of North America
 Assembled in Mexico / Assemblé au Mexique



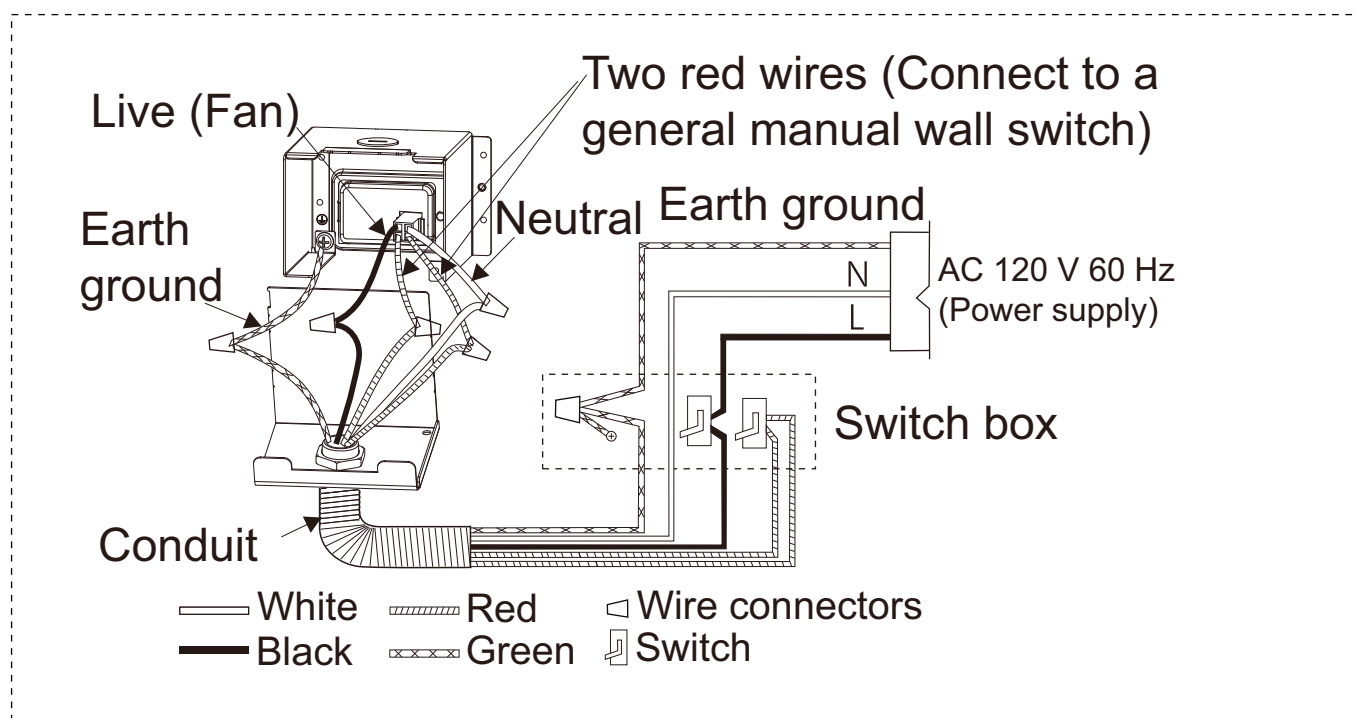
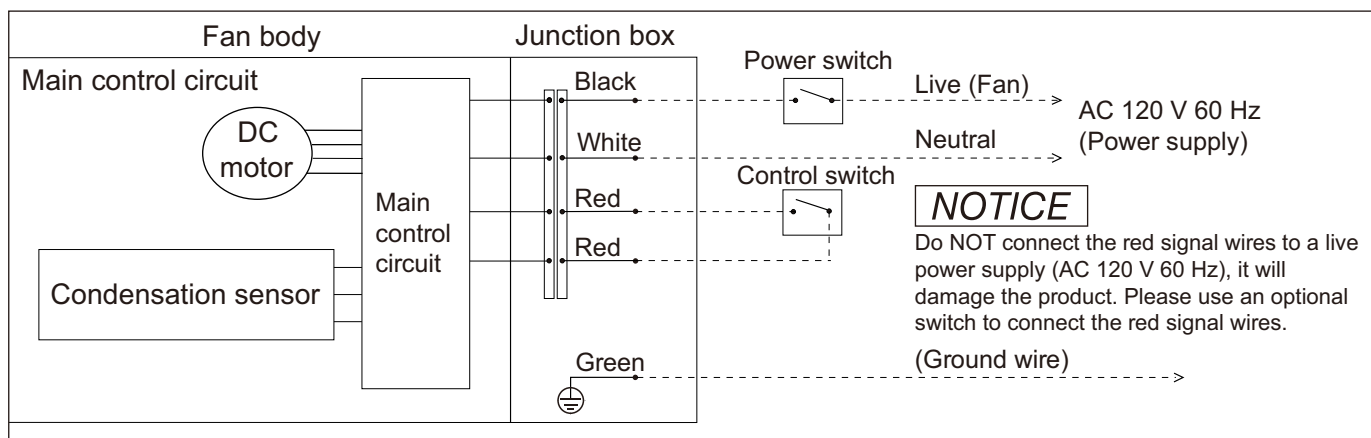
2. Parts Identification

FV-0511VFC1

Packing Section










3. Wiring Diagram





4. Parts List

FFV-0511VFC1

Main Body Section

| No. | Part No. | Part Name | Q'ty | Remark |
|-----|---------------|----------------------|------|---|
| 1 | FFV511VF1900 | Frame Assembly | 1 | |
| 2 | FFV511FC1910 | Adapter Assembly | 1 |  |
| 3 | FFV08VKS3M915 | Connector Plate | 1 | |
| 4 | FFV511FC1301 | Connector Assy (V) | 1 |  |
| 5 | FFV3450010S | Earth Lead wire | 1 |  |
| 6 | FFV2800027S | Junction Cover | 1 | |
| 7 | FFV511VF1M2 | Motor | 1 |  |
| 8 | FFV511VF1904 | Motor Support | 1 | |
| 9 | FFV511VF1802 | Blade | 1 | |
| 10 | FFV0511VFC1 | Main PCB Section | 1 |  |
| 11 | FFV7020021S | Nut | 1 | |
| 12 | FFV511VF1906 | Casing section | 1 | |
| 13 | FFV3400146S | Grill Assembly | 1 |  |
| A | FFVXTT4-8FFJ | Screw (ST4-8) | 7 |  |
| B | FFVXYM4DC8BN | Screw w/washer(M4-8) | 1 | |
| C | FFV7000089S | Screw (ST4-12) | 7 | |
| D | FFV7000065S | Bind Screw | 2 | |


Main PCB Section

| No. | Part No. | Part Name | Q'ty | Remark |
|-----|--------------|-----------------|------|---|
| 14 | FFV510SCL996 | Main PCB Box | 1 | |
| 15 | FFV510VS1M9 | Speed Switch | 1 | |
| 16 | FFV510SCL99 | Rotation Switch | 1 | |
| 17 | FFV510SCL97 | Main PCB Cover | 1 | |
| 18 | FFV511VF1321 | Motor Lead Wire | 1 |  |
| 19 | FFV511FC1625 | Sensor Wire | 1 |  |
| E | FFVXTN268GFJ | Screw | 2 | |

Main Label

| No. | Part No. | Part Name | Q'ty | Remark |
|-----|--------------|-------------------|------|--------|
| 20 | FFV51VHL1051 | Instruction Label | 1 | |
| 21 | FFV0810011S | Caution Label | 1 | |
| 22 | FFV2260003S | Holograph label | 1 | |
| 23 | FFV511FC1050 | Name Plate | 1 | |
| 24 | FFV511FC1013 | Switch Label | 1 | |

Packing Section

| No. | Part No. | Part Name | Q'ty | Remark |
|-----|----------------|------------------------|------|---|
| 25 | FFV11QCL1920 | Hanger Assembly | 1 |  |
| 26 | FFV511VF1450 | Louver Pad Assembly | 1 | |
| 27 | FFV4650016S | PolyCover with Print | 1 | |
| 28 | FFV511VF1891 | Top Pad | 1 | |
| 29 | FFV511VF1922 | Adapter Connector | 1 | |
| 30 | FFV511VF1892 | Bottom Pad | 1 | |
| 31 | FFV511VF1401 | Packing Case Assy | 1 | |
| 32 | FFV511VF1420 | Installation Inst (ES) | 1 | |
| 33 | FFV511VF1421 | Installation Inst (EF) | 1 | |
| 34 | FFV11KSL1M031A | Accessory A | 1 | |