

NUTP9 Series

24V Side-Lit Non-Encapsulated LED Tape Light

Source: 1.05W/ft. LED
70lm/ft.

Type

Project

Catalog No.

Notes

PRODUCT DESCRIPTION

24V Side-Lit LED Tape has the same performance features as the standard tape light, but instead of project the light straight, the light is projected to the side, parallel to the mounting surface of the tape. For example, when mounted under a cabinet in a horizontal position, the light projects sideways toward the back splash with minimal LED image on the counter top.

FEATURES

- Available in 16' roll, 12" section, and 4" section
- 70 lumens per foot
- Separable every 12", easily disconnected and connected without soldering
- Field cuttable every 4" or 6 LEDs
- Easy to install; pre-applied 3M™ tape or 15 acrylic mounting clips (included with roll)
- Single color illumination in 2700K or 3000K
- No soldering or additional wiring is required

INCLUDED WITH EVERY 16' ROLL

(1) 16' Tape Light Roll with 12" separable sections, (15) Acrylic Mounting Clips with screws [NATL-401], and (1) 9" Power Line Interconnector [NATL-509].

SPECIFICATION

Construction: The tape can be cut every 4" at marked intervals, cutting does not effect circuit. LED Tape Light is also separable every 12", simply separate pieces as this eliminates soldering when using partial rolls.

Mounting: Each Tape Light includes pre-applied 3M™ adhesive tape for simple installation. Optional channels and clear acrylic clips are available.

LIMITATIONS

- Not rated or warranted for enclosed applications
- Tape light and most accessories are not rated for in-wall installation (NATL-W16-2 is rated for in-wall installations)
- Do not install in where LED chips are exposed to direct sunlight, as damage to the phosphor will occur

ELECTRICAL

Input Voltage: 24V

Lumens / Wattage: 70lm / 1.05W per foot

Color Temperature: 2700K or 3000K

Color Rendering Index: 80 CRI

Operating Temperature: -25°C to 45°C

Dimming: Dimmable with Dimmable LED Driver

Maximum Run Length: 64'

LABELS AND LISTINGS

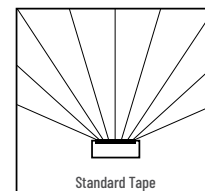
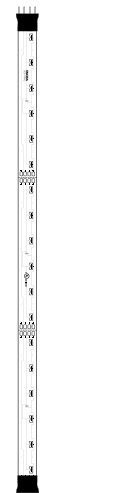
- cULus Listed for Damp Locations
- 3-Year Limited Warranty



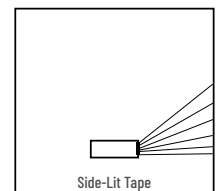
PRODUCT IMAGES & DIMENSIONS



0.394" width
1/8" depth



Standard Tape



Side-Lit Tape

24V Side-Lit Non-Encapsulated LED Tape Light

Length / Finish	CCT / CRI	Section Length
NUTP9-16LED = 16' Roll / Amber finish	27 = 2700K / 80 CRI	(blank) = 16' Roll
NUTP9-LED = Section / Amber finish	30 = 3000K / 80 CRI	/4 = 4" Section
		/12 = 12" Section

Example: NUTP9-LED30/12 = 12" 24V Side-Lit LED Tape Light, 3000K / 80 CRI

NUTP9 Series

24V Side-Lit Non-Encapsulated LED Tape Light Accessories

Type

Project

Catalog No.

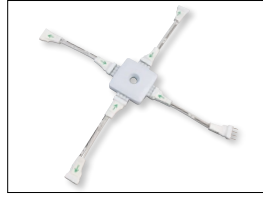
Notes



Y Splitter Cable

NATL-300W

Allows splitting the Tape Light from a run or driver, into two separate runs.



X-Splitter Cable

NATL-301W

Allows splitting the Tape Light from a run or driver, into three separate runs.



Interconnection Cable

NATL-202W 2" Cable
NATL-206W 6" Cable
NATL-218W 18" Cable
NATL-236W 36" Cable
NATL-272W 72" Cable

Allows easy linking of two Tape Light sections. Cables are flexible and can be moved in any direction, or be joined together for custom lengths.



Power Line Interconnector

NATL-509W 9" Cable

Connects any Tape Light run to a driver. (1) Power line interconnector is included with every Tape Light roll/kit.



Power Line Interconnector with On/Off Switch

NATL-511W 11" Cable

Allows individual switching on any Tape Light run, and connect LED Tape Light run directly to LED Driver.



Shrink Wrap Tube

NATL-400 Pack of 5
 Seals connection made in the field. Necessary to maintain cULus listing. Two shrink wrap tubes are included with every Tape Light roll and section.



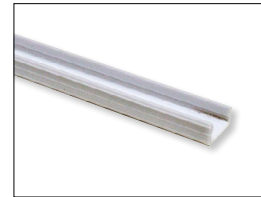
End Cap

NATL-403 Black
NATL-403W White
 Covers open end of Tape Light.



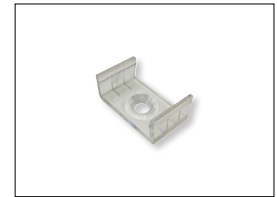
Clear Acrylic Mounting Clips

NATL-401 Pack of 15
 Use in conjunction with adhesive backing to attach Tape Light to a surface. Pack of 15 clear acrylic mounting clips are included with every Tape Light roll.



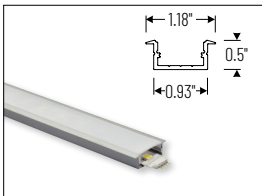
4' Plastic Channel

NATL-420B Black
NATL-420W White
 Mounts Tape Light to various surfaces. Tape Light snaps into the channel. Field cuttable.



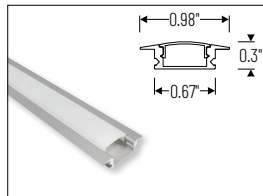
Mounting Clips for Channels

NATL-CMC Pack of 15
 Mounting clips for NATL-C23, NATL-C24 and NATL-C27. Pack includes 15 mounting clips.



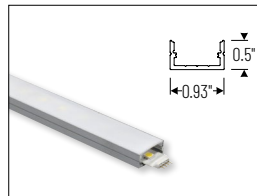
4' Shallow Recessed Channel

NATL-C23A Aluminum
 Used to mount tape light recessed in a surface. Plastic diffuser and end caps included. Field cuttable.



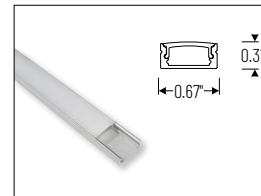
4' Shallow Recessed Channel

NATL2-C23A Aluminum
 Used to mount tape light recessed in a surface. Diffused lens, end caps and mounting hardware are included. Field cuttable.



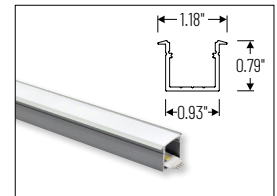
4' Shallow Channels

NATL-C24A Aluminum
NATL-C24B Black
NATL-C24W White
 Used to mount tape light to various surfaces. Plastic diffuser and end caps included. Field cuttable.



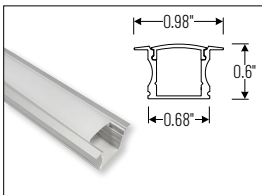
4' Shallow Channel

NATL2-C24A Aluminum
 Used to mount tape light to various surfaces. Diffused lens, end caps and mounting hardware are included. Field cuttable.



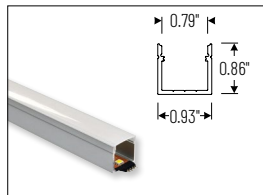
4' Deep Recessed Channel

NATL-C25A Aluminum
 Used to mount tape light recessed in a surface. Plastic diffuser and end caps included. Field cuttable.



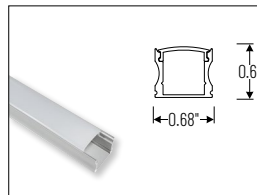
4' Deep Recessed Channel

NATL2-C25A Aluminum
 Used to mount tape light recessed in a surface. Diffused lens, end caps and mounting hardware are included. Field cuttable.



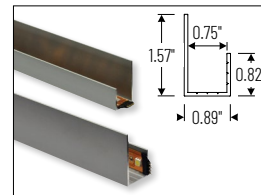
4' Deep Channels

NATL-C26A Aluminum
NATL-C26W White
 Used to mount tape light to various surfaces. Plastic diffuser and end caps included. Field cuttable.



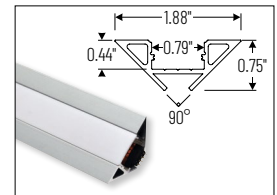
4' Deep Channel

NATL2-C26A Aluminum
 Used to mount tape light to various surfaces. Diffused lens, end caps and mounting hardware are included. Field cuttable.



4' J-Style Channel

NATL-C27A Aluminum
 Used to mount tape light to various surfaces. Field cuttable.



4' Corner Channels

NATL-C28A Aluminum
NATL-C28B Black
NATL-C28W White
 Plastic diffuser and End caps included. Field cuttable.

NUTP9 Series

24V Side-Lit Non-Encapsulated LED Tape Light Drivers & Accessories

Type

Project

Catalog No.

Notes



Direct Plug-In LED Driver

NATL-524W 24V 24W
NATL-545W 24V 45W

Input Voltage: 120V
Cable Length: 6'



Direct Plug-In LED Driver

NATL-596W 24V 96W

Input Voltage: 120V
Input Wire: 5' Cord and Plug
Output Wire: 44" Power line connector



Class II Hardwire LED Driver

NATL-5100HW 24V 81.6W

Input Voltage: 120-240V
Dimming: Non-Dimmable
Includes: 10' Power Line Connector



Class II Hardwire LED Driver
0-10V Dimming

NATL-5096-24-HWD10 24V 81.6W

Input Voltage: 120-277V
Dimming: 0-10V
Includes: 10' Power Line Connector



Class II Hardwire LED Driver
ELV Dimming

NATLED-5040HW 24V 40W
NATLED-5075HW 24V 75W

Input Voltage: 120V
Dimming: ELV
Includes: 10' Power Line Connector



Class II Hardwire LED Driver
with Breakers, MLV Dimming

NMT-303/24C2D1 120V/24V
NMT-303/24C2D2 277V/24V

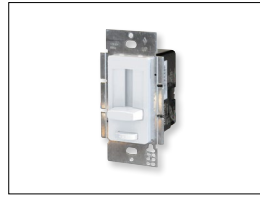
Input Voltage: 120V or 277V
Dimming: Magnetic Low Voltage
Breakers: (3) 100W
NOTE: Power Line Connector(s) not included



Class II Hardwire LED Driver
with Regulator, MLV Dimming

NMTD-60/24D 24V 60W
NMTD-96/24D 24V 96W

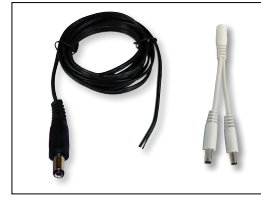
Input Voltage: 120-277V
Dimming: Magnetic Low Voltage
Regulator: Integral regulator for constant current and voltage
Includes: 10' Power Line Connector



NEXUS® All-in-One LED Driver and
Dimmer

NATL-SWEX60/24A 24V 60W
NATL-SWEX100/24A 24V 100W

Input Voltage: 120V
Dimming: Integral Dimmer
Description: Eliminates the driver and allows 120V input and 24V output from a single gang box. 100-5% dimming and on/off switch.



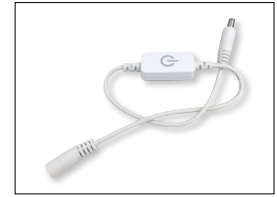
Power Line Connector

NALTL-10 10' Power Line
NALTL-30 30' Power Line

For use with Class II drivers. Carries output from driver, requires power line interconnectors.

NATL-302W 5" Splitter

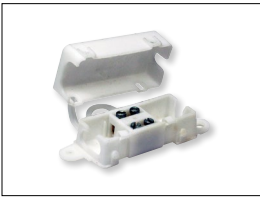
Splits power line connector into two separate leads, requires power line cable.



Touch Dimmer with Memory

NATL-518W

72W max., no power fail memory, touch on/off and hold to dim.



Low Voltage Splice Box

NATL-415W

Use to join low voltage lead to power line connector.



Terminal Block

NATL-407 4-Way
2-3/8"L x 1-1/8"W x 7/8"D

NATL-408 8-Way
4"L x 1-1/8"W x 7/8"D



Wire Clip, Plastic - 10pk

NATL-404W J-Clip
NATL-405W Over the Wire
NATL-406W Square Clip



2' Wire Raceway

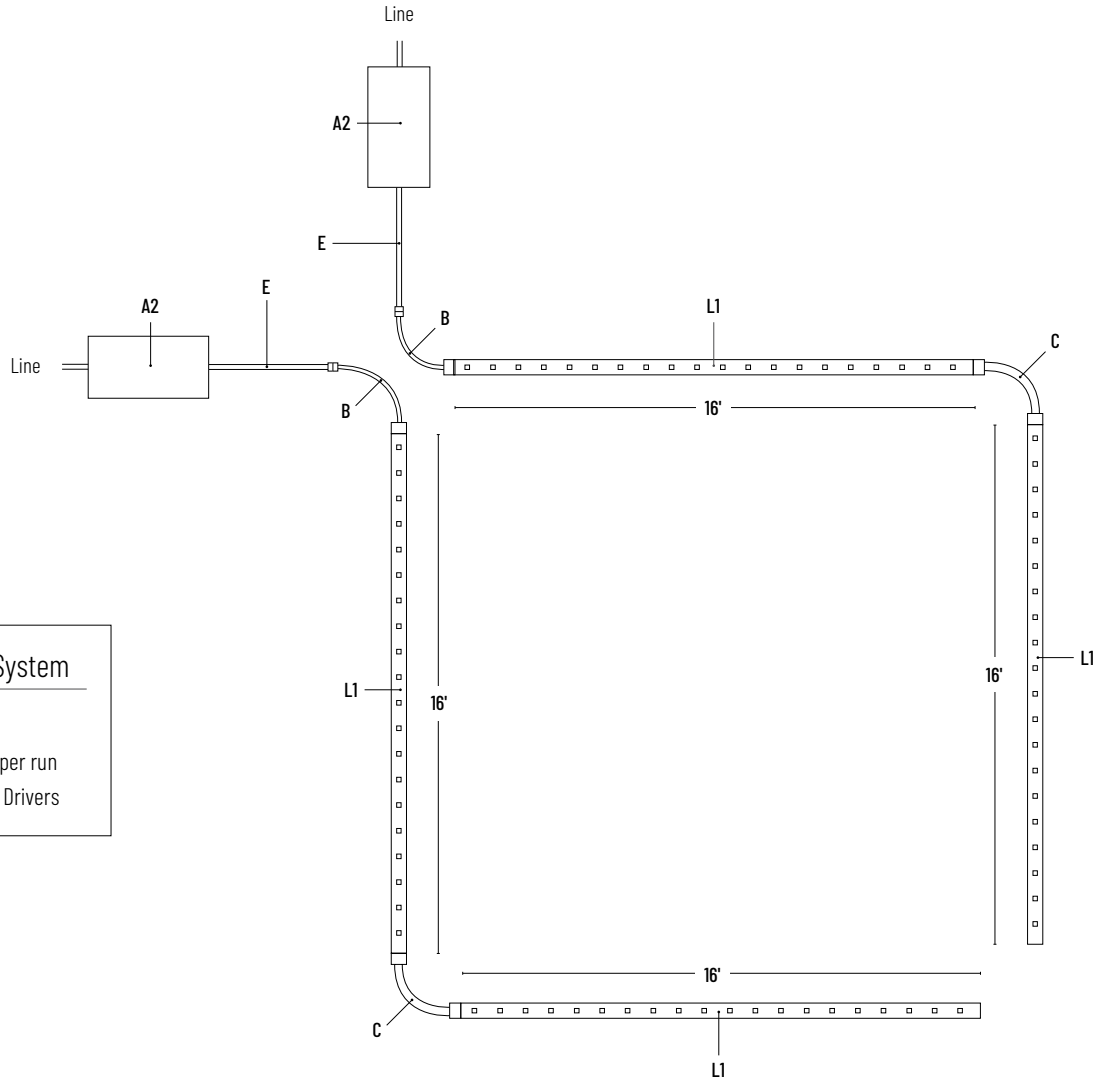
NATL-422B Black
NATL-422W White

Field-cuttable plastic. Includes wire channel with double faced tape and cover.

NUTP9 Series

24V Side-Lit Non-Encapsulated LED Tape Light - Sample Layout

Type	_____
Project	_____
Catalog No.	_____
Notes	_____



24 Volt System

- 2 x 32' runs
- 33.6 Watts per run
- 2 x 60 Watt Drivers

	DESCRIPTION	ITEM #
A2	24V 45W Plug-In LED Driver	NATL-545W
B	24V 9" Power Line Interconnector (one included with each Tape Light roll)	NATL-509
C	2" Interconnection Cable	NATL-202
	6" Interconnection Cable	NATL-206
	18" Interconnection Cable	NATL-218
	36" Interconnection Cable	NATL-236
	72" Interconnection Cable	NATL-272
E	10' Power Line Connector (one included with Class II drivers)	NALTL-10
	30' Power Line Connector	NALTL-30
L1	24V 16' LED Tape Light Rolls (Disconnect every 12" or can be cut every 4", contains (16) 12" segments)	(4) NUTP9-16LED(CCT)

*Note: All drivers require power line interconnector to connect to tape.