

# NUTP8-W Series

## 24V High Output White LED Tape Light

Source: 6.5W/ft. LED

450lm/ft.

Type

Project

Catalog No.

Notes

### PRODUCT DESCRIPTION

High Output LED Tape Light has three times the light output of our standard tape, and is a perfect solution for your LED linear lighting needs. Very low profile High Output LED Tape is great for use in cove lighting, architectural enhancements, under cabinet or many more discreet locations.

### FEATURES

- Available in 10' roll, 12" section, and 4" section
- 24V DC system
- 450 lumens per foot
- 5 available colors: Blue, Red, Cool White (4200K), Warm White (3000K) or Warm White (2700K)
- Separable every 12", easily disconnected and connected without soldering
- Field cuttable every 4" or 6 LEDs
- Easy to install; pre-applied 3M™ tape or 15 acrylic mounting clips (included with roll)
- No soldering or additional wiring is required

### INCLUDED WITH EVERY 10' ROLL

(1) 10' Tape Light Roll with 12" separable sections, (15) Acrylic Mounting Clips with screws [NATHR-680], and (1) 12" Power Line Interconnector [NAHO-609].

### SPECIFICATION

**Construction:** The silicone encapsulated tape can be cut every 4" or 6 LEDs at marked intervals. Cutting does not effect circuit (shrink wrap tube included for concealment). LED Tape Light is also separable every 12", each connection has pre-installed shrink wrap around power connections to ensure listing. Simply slice the clear shrink wrap at each electrical connection, and separate pieces. This eliminates soldering when using partial rolls. Each roll or kit comes with 12" power line connector [NAHO-609].

**Mounting:** Each Tape Light includes pre-applied 3M™ adhesive tape for simple installation. Optional channels and clear acrylic clips are available.

### LIMITATIONS

- Not rated or warranted for enclosed applications, only approved channels
- Tape light and most accessories are not rated for in-wall installation (NATL-W16-2 is rated for in-wall installations)
- Do not install in where LED chips are exposed to direct sunlight, as damage to the phosphor will occur

### ELECTRICAL

**Input Voltage:** 24V

**Light Source:** 18 High Output LEDs per foot

**Lumens / Wattage:** 450lm / 6.5W per foot

**Color Temperature:** Blue, Red, 2700K, 3000K, 3500K or 4200K

**Color Rendering Index:** 90 CRI

**Operating Temperature:** -25°C to 45°C

**Dimming:** Dimmable with Dimmable LED Driver

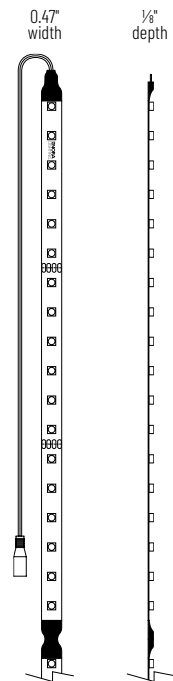
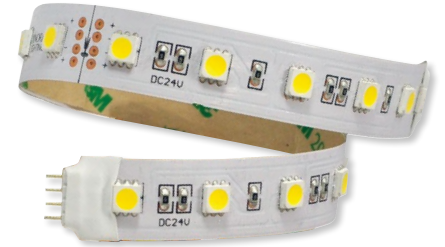
**Maximum Run Length:** 16'

### LABELS AND LISTINGS

- cULus Listed for Damp Locations
- 3-Year Limited Warranty



### PRODUCT IMAGES & DIMENSIONS



## 24V High Output White LED Tape Light

Length / Finish	CCT / CRI	Section Length
<b>NUTP8-W10LED</b> = 10' Roll / White finish	<b>927</b> = 2700K / 90 CRI	<b>(blank)</b> = 10' Roll
	<b>930</b> = 3000K / 90 CRI	
	<b>935</b> = 3500K / 90 CRI	
	<b>942</b> = 4200K / 90 CRI	
	<b>B</b> = Blue	
	<b>R</b> = Red	
<b>NUTP8-WLED</b> = Section / White finish	<b>927</b> = 2700K / 90 CRI	<b>/4</b> = 4" Section
	<b>930</b> = 3000K / 90 CRI	<b>/12</b> = 12" Section
	<b>942</b> = 4200K / 90 CRI	
	<b>B</b> = Blue (12" only)	

Example: **NUTP8-WLED930/12** = 12" 24V High Output White LED Tape Light, 3000K / 90 CRI

# NUTP8 Series

## 24V High Output LED Tape Light Accessories

Type

Project

Catalog No.

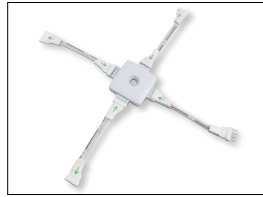
Notes



\*Y\* Splitter Cable

**NAHO-600W**

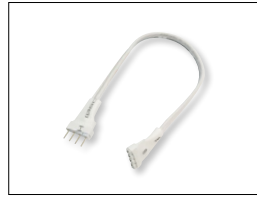
Allows splitting the Tape Light from a run or driver, into two separate runs.



X-Splitter Cable

**NAHO-601W**

Allows splitting the Tape Light from a run or driver, into three separate runs.



Interconnection Cable

**NAHO-602W** 2" Cable  
**NAHO-606W** 6" Cable  
**NAHO-618W** 18" Cable  
**NAHO-636W** 36" Cable  
**NAHO-672W** 72" Cable

Allows easy linking of two Tape Light sections. Cables are flexible and can be moved in any direction, or be joined together for custom lengths.



Power Line Interconnector

**NAHO-609W** 12" Cable

Connects any Tape Light run to a driver. (1) Power line interconnector is included with every Tape Light roll.



Power Line Interconnector with On/Off Switch

**NAHO-611W**

Allows individual switching on any Tape Light run, and connect LED Tape Light run directly to LED Driver.



Shrink Wrap Tube

**NATL-400** Pack of 5

Seals connection made in the field. Necessary to maintain cULus listing. Two shrink wrap tubes are included with every Tape Light roll and section.



End Cap

**NATL-403** Black  
**NATL-403W** White

Covers open end of Tape Light.



Clear Acrylic Mounting Clips

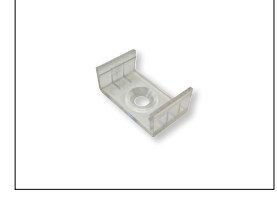
**NATL-401** Pack of 15

Use in conjunction with adhesive backing to attach Tape Light to a surface. Pack of 15 clear acrylic mounting clips are included with every Tape Light roll.



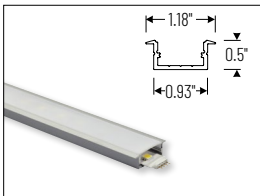
4' Channel

**NATHR-680** 4' Channel / Aluminum  
 Aluminum channel is field cuttable.



Mounting Clips for Channels

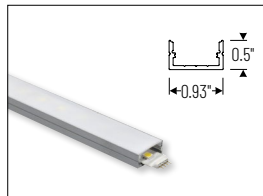
**NATL-CMC** Pack of 15  
 Mounting clips for NATL-C23, NATL-C24 and NATL-C27. Pack includes 15 mounting clips.



4' Shallow Recessed Channel

**NATL-C23A** Aluminum

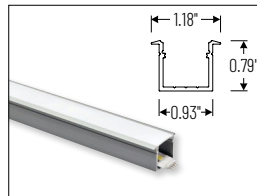
Used to mount tape light recessed in a surface. Plastic diffuser and end caps included. Field cuttable.



4' Shallow Channels

**NATL-C24A** Aluminum  
**NATL-C24B** Black  
**NATL-C24W** White

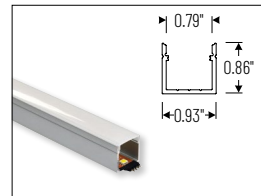
Used to mount tape light to various surfaces. Plastic diffuser and end caps included. Field cuttable.



4' Deep Recessed Channel

**NATL-C25A** Aluminum

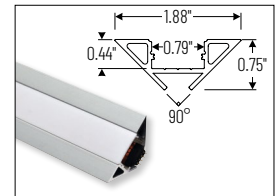
Used to mount tape light recessed in a surface. Plastic diffuser and end caps included. Field cuttable.



4' Deep Channels

**NATL-C26A** Aluminum  
**NATL-C26W** White

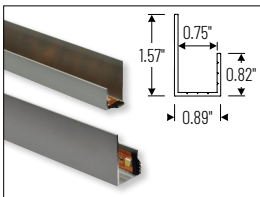
Used to mount tape light to various surfaces. Plastic diffuser and end caps included. Field cuttable.



4' Corner Channels

**NATL-C28A** Aluminum  
**NATL-C28B** Black  
**NATL-C28W** White

Plastic diffuser and End caps included. Field cuttable



4' J-Style Channel

**NATL-C27A** Aluminum

Used to mount tape light to various surfaces. Field cuttable.

# NUTP8 Series

## 24V High Output LED Tape Light Drivers & Accessories

Type

Project

Catalog No.

Notes



Direct Plug-In LED Driver

**NATL-524W** 24V 24W  
**NATL-545W** 24V 45W

**Input Voltage:** 120V  
**Cable Length:** 6'



Direct Plug-In LED Driver

**NATL-596W** 24V 96W

**Input Voltage:** 120V  
**Input Wire:** 5' Cord and Plug  
**Output Wire:** 44" Power line connector



Class II Hardwire LED Driver

**NATL-5100HW** 24V 81.6W

**Input Voltage:** 120-240V  
**Dimming:** Non-Dimmable  
**Includes:** 10' Power Line Connector



Class II Hardwire LED Driver  
0-10V Dimming

**NATL-5096-24-HWD10** 24V 81.6W

**Input Voltage:** 120-277V  
**Dimming:** 0-10V  
**Includes:** 10' Power Line Connector



Class II Hardwire LED Driver  
ELV Dimming

**NATLED-5040HW** 24V 40W

**NATLED-5075HW** 24V 75W

**Input Voltage:** 120V  
**Dimming:** ELV  
**Includes:** 10' Power Line Connector



Class II Hardwire LED Driver  
with Breakers, MLV Dimming

**NMT-303/24C2D1** 120V/24V  
**NMT-303/24C2D2** 277V/24V

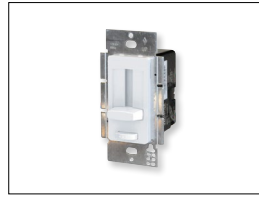
**Input Voltage:** 120V or 277V  
**Dimming:** Magnetic Low Voltage  
**Breakers:** (3) 100W  
**NOTE:** Power Line Connector(s) not included



Class II Hardwire LED Driver  
with Regulator, MLV Dimming

**NMTD-60/24D** 24V 60W  
**NMTD-96/24D** 24V 96W

**Input Voltage:** 120-277V  
**Dimming:** Magnetic Low Voltage  
**Regulator:** Integral regulator for constant current and voltage  
**Includes:** 10' Power Line Connector



NEXUS® All-in-One LED Driver and  
Dimmer

**NATL-SWEX60/24A** 24V 60W  
**NATL-SWEX100/24A** 24V 100W

**Input Voltage:** 120V  
**Dimming:** Integral Dimmer  
**Description:** Eliminates the driver and allows 120V input and 24V output from a single gang box. 100-5% dimming and on/off switch.



Power Line Connector

**NALTL-10** 10' Power Line  
**NALTL-30** 30' Power Line

For use with Class II drivers. Carries output from driver, requires power line interconnectors.

**NATL-302W** 5" Splitter

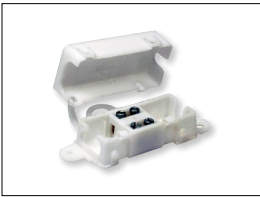
Splits power line connector into two separate leads, requires power line cable.



Touch Dimmer with Memory

**NATL-518W**

72W max., no power fail memory, touch on/off and hold to dim.



Low Voltage Splice Box

**NATL-415W**

Use to join low voltage lead to power line connector.



Terminal Block

**NATL-407** 4-Way  
2-3/8"L x 1-1/8"W x 7/8"D

**NATL-408** 8-Way  
4"L x 1-1/8"W x 7/8"D



Wire Clip, Plastic - 10pk

**NATL-404W** J-Clip  
**NATL-405W** Over the Wire  
**NATL-406W** Square Clip



2' Wire Raceway

**NATL-422B** Black  
**NATL-422W** White

Field-cuttable plastic. Includes wire channel with double faced tape and cover.