

NUTPI Series

24V Standard Silicone Encapsulated LED Tape Light

Source: 1.5W/ft. LED
70lm/ft.

Type _____

Project _____

Catalog No. _____

Notes _____

PRODUCT DESCRIPTION

LED Tape Light is a perfect solution for your LED linear lighting needs. This energy efficient and very low profile LED Tape is great for use in cove lighting, architectural enhancements, under cabinet or many more discreet locations. This flexible LED light source is a durable silicone encapsulated tape, cULus Listed for Damp Location applications. Available in a roll, kit, or sections. Each roll or kit comes with (16) 12" sections linked together.

FEATURES

- Available in 16' kit, 16' roll, 12" section, and 4" section
- 70 lumens per foot
- Separable every 12", easily disconnected and connected without soldering
- Field cuttable every 4" or 6 LEDs
- Easy to install; pre-applied 3M™ tape or 15 acrylic mounting clips (included with roll/kit)
- 7 available colors: Blue, Green, Red, Yellow, Cool White (4200K), Warm White (3000K) or Warm White (2700K)
- No soldering or additional wiring is required

INCLUDED WITH EVERY 16' ROLL

(1) 16' Tape Light Roll with 12" separable sections, (15) Acrylic Mounting Clips with screws [NATL-401], and (1) 9" Power Line Interconnector [NATL-509].

INCLUDED WITH EVERY 16' KIT

(1) 16' Tape Light Roll, (15) Acrylic Mounting Clips with screws [NATL-401], (1) 9" Power Line Interconnector [NATL-509], (5) Shrink Wrap Tubes [NATL-400] and (1) 24V Plug-In Driver [NATL-524].

SPECIFICATION

Construction: The silicone encapsulated tape can be cut every 4" or 6 LEDs at marked intervals. Cutting does not effect circuit (shrink wrap tube included for concealment). LED Tape Light is also separable every 12", each connection has pre-installed shrink wrap around power connections to ensure listing. Simply slice the clear shrink wrap at each electrical connection, and separate pieces. This eliminates soldering when using partial rolls. Each roll or kit comes with 9" power line connector [NATL-509].

Mounting: Each Tape Light includes pre-applied 3M™ adhesive tape for simple installation. Optional channels and clear acrylic clips are available.

ELECTRICAL

Input Voltage: 24V

Light Source: 18 LEDs per foot

Lumens / Wattage: 70lm / 1.5W per foot

Color Temperature: Blue, Green, Red, Yellow, 2700K, 3000K or 4200K

Color Rendering Index: 90 CRI

Life Expectancy: 50,000 hours

Dimming: Dimmable with Dimmable LED Driver

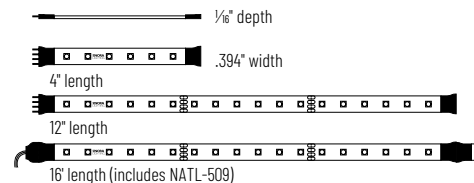
Maximum Run Length: 64'

LABELS AND LISTINGS

- cULus Listed for Damp Locations
- 3-Year Limited Warranty



PRODUCT IMAGES & DIMENSIONS



24V Standard Silicone Encapsulated LED Tape Light

| Length / Finish | CCT / CRI | Section Length |
|-----------------------------------------------|------------------------------|---------------------------|
| NUTPI-W16LED = 16' Roll / White finish | 927 = 2700K / 90 CRI | (blank) = 16' Roll |
| NUTPI-WLED = Section / White finish | 930 = 3000K / 90 CRI | /4 = 4" Section |
| | 942 = 4200K / 90 CRI | /12 = 12" Section |
| | B = Blue | |
| | R = Red | |
| | Y = Yellow (Amber) | |
| NUTPI-W16LED = 16' Kit | 927K = 2700K / 90 CRI | (blank) = 16' Kit |
| | 930K = 3000K / 90 CRI | |
| | 942K = 4200K / 90 CRI | |

Example: **NUTPI-WLED/12** = 12" 24V Standard LED Tape Light, Blue LED

NUTPI Series

24V Standard Silicone Encapsulated LED Tape Light Accessories

Type

Project

Catalog No.

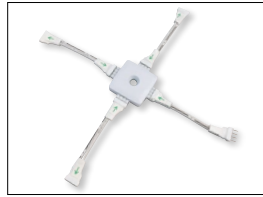
Notes



Y Splitter Cable

NATL-300W

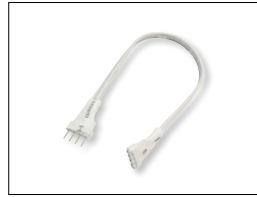
Allows splitting the Tape Light from a run or driver, into two separate runs.



X-Splitter Cable

NATL-301W

Allows splitting the Tape Light from a run or driver, into three separate runs.



Interconnection Cable

NATL-202W

2" Cable

NATL-206W

6" Cable

NATL-218W

18" Cable

NATL-236W

36" Cable

NATL-272W

72" Cable

Allows easy linking of two Tape Light sections. Cables are flexible and can be moved in any direction, or be joined together for custom lengths.

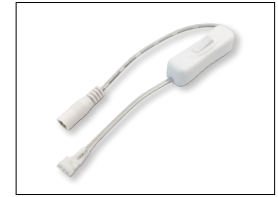


Power Line Interconnector

NATL-509W

9" Cable

Connects any Tape Light run to a driver. (1) Power line interconnector is included with every Tape Light roll/kit.



Power Line Interconnector with On/Off Switch

NATL-511W

11" Cable

Allows individual switching on any Tape Light run, and connect LED Tape Light run directly to LED Driver.



Shrink Wrap Tube

NATL-400

Pack of 5

Seals connection made in the field. Necessary to maintain cULus listing. Two shrink wrap tubes are included with every Tape Light roll and section.



End Cap

NATL-403

NATL-403W

Black

White

Covers open end of Tape Light.

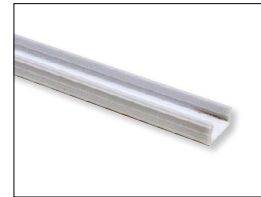


Clear Acrylic Mounting Clips

NATL-401

Pack of 15

Use in conjunction with adhesive backing to attach Tape Light to a surface. Pack of 15 clear acrylic mounting clips are included with every Tape Light roll.



4' Plastic Channel

NATL-420B

NATL-420W

Black

White

Mounts Tape Light to various surfaces. Tape Light snaps into the channel. Field cuttable.

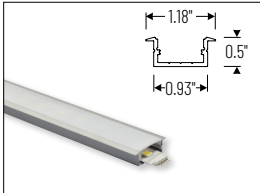


Mounting Clips for Channels

NATL-CMC

Pack of 15

Mounting clips for NATL-C23, NATL-C24 and NATL-C27. Pack includes 15 mounting clips.

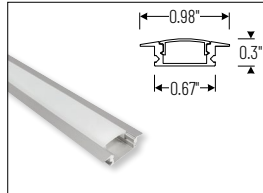


4' Shallow Recessed Channel

NATL-C23A

Aluminum

Used to mount tape light recessed in a surface. Diffused lens, end caps and mounting hardware are included. Field cuttable.

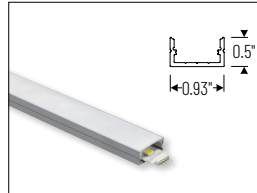


4' Shallow Recessed Channel

NATL2-C23A

Aluminum

Used to mount tape light recessed in a surface. Diffused lens, end caps and mounting hardware are included. Field cuttable.

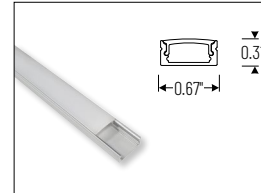


4' Shallow Channels

NATL-C24A

Aluminum

Used to mount tape light to various surfaces. Plastic diffuser and end caps included. Field cuttable.

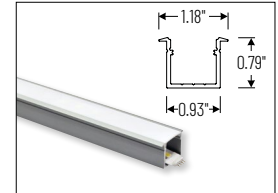


4' Shallow Channel

NATL2-C24A

Aluminum

Used to mount tape light to various surfaces. Diffused lens, end caps and mounting hardware are included. Field cuttable.

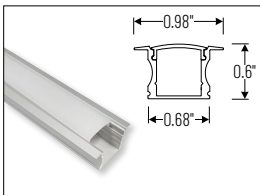


4' Deep Recessed Channel

NATL-C25A

Aluminum

Used to mount tape light recessed in a surface. Plastic diffuser and end caps included. Field cuttable.

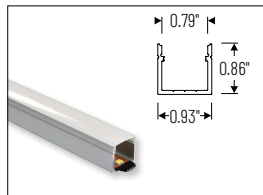


4' Deep Recessed Channel

NATL2-C25A

Aluminum

Used to mount tape light recessed in a surface. Diffused lens, end caps and mounting hardware are included. Field cuttable.

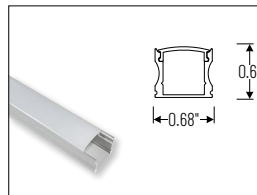


4' Deep Channels

NATL-C26A

Aluminum

Used to mount tape light to various surfaces. Plastic diffuser and end caps included. Field cuttable.

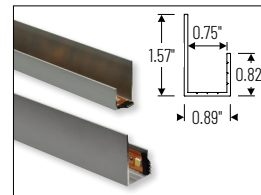


4' Deep Channel

NATL2-C26A

Aluminum

Used to mount tape light to various surfaces. Diffused lens, end caps and mounting hardware are included. Field cuttable.

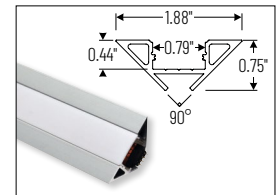


4' J-Style Channel

NATL-C27A

Aluminum

Used to mount tape light to various surfaces. Field cuttable.



4' Corner Channels

NATL-C28A

Aluminum

NATL-C28B

Black

NATL-C28W

White

Plastic diffuser and End caps included. Field cuttable

NUTPI Series

24V Standard Silicone Encapsulated LED Tape Light Drivers & Accessories

Type

Project

Catalog No.

Notes



Direct Plug-In LED Driver

NATL-524W 24V 24W
NATL-545W 24V 45W

Input Voltage: 120V
Cable Length: 6'



Direct Plug-In LED Driver

NATL-596W 24V 96W

Input Voltage: 120V
Input Wire: 5' Cord and Plug
Output Wire: 44" Power line connector



Class II Hardwire LED Driver

NATL-5100HW 24V 81.6W

Input Voltage: 120-240V
Dimming: Non-Dimmable
Includes: 10' Power Line Connector



Class II Hardwire LED Driver
0-10V Dimming

NATL-5096-24-HWD10 24V 81.6W

Input Voltage: 120-277V
Dimming: 0-10V
Includes: 10' Power Line Connector



Class II Hardwire LED Driver
ELV Dimming

NATLED-5040HW 24V 40W
NATLED-5075HW 24V 75W

Input Voltage: 120V
Dimming: ELV
Includes: 10' Power Line Connector



Class II Hardwire LED Driver
with Breakers, MLV Dimming

NMT-303/24C2D1 120V/24V
NMT-303/24C2D2 277V/24V

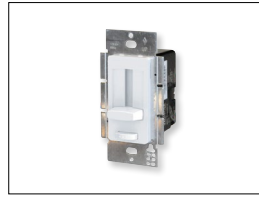
Input Voltage: 120V or 277V
Dimming: Magnetic Low Voltage
Breakers: (3) 100W
NOTE: Power Line Connector(s) not included



Class II Hardwire LED Driver
with Regulator, MLV Dimming

NMTD-60/24D 24V 60W
NMTD-96/24D 24V 96W

Input Voltage: 120-277V
Dimming: Magnetic Low Voltage
Regulator: Integral regulator for constant current and voltage
Includes: 10' Power Line Connector



NEXUS® All-in-One LED Driver and
Dimmer

NATL-SWEX60/24A 24V 60W
NATL-SWEX100/24A 24V 100W

Input Voltage: 120V
Dimming: Integral Dimmer
Description: Eliminates the driver and allows 120V input and 24V output from a single gang box. 100-5% dimming and on/off switch.



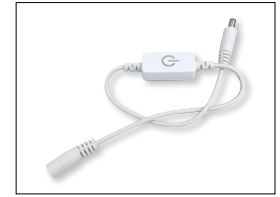
Power Line Connector

NALTL-10 10' Power Line
NALTL-30 30' Power Line

For use with Class II drivers. Carries output from driver, requires power line interconnectors.

NATL-302W 5" Splitter

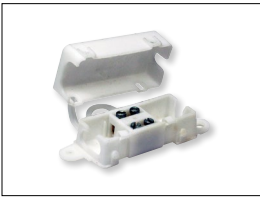
Splits power line connector into two separate leads, requires power line cable.



Touch Dimmer with Memory

NATL-518W

72W max., no power fail memory, touch on/off and hold to dim.



Low Voltage Splice Box

NATL-415W

Use to join low voltage lead to power line connector.



Terminal Block

NATL-407 4-Way
2-3/8"L x 1-1/8"W x 7/8"D

NATL-408 8-Way
4"L x 1-1/8"W x 7/8"D



Wire Clip, Plastic - 10pk

NATL-404W J-Clip
NATL-405W Over the Wire
NATL-406W Square Clip



2' Wire Raceway

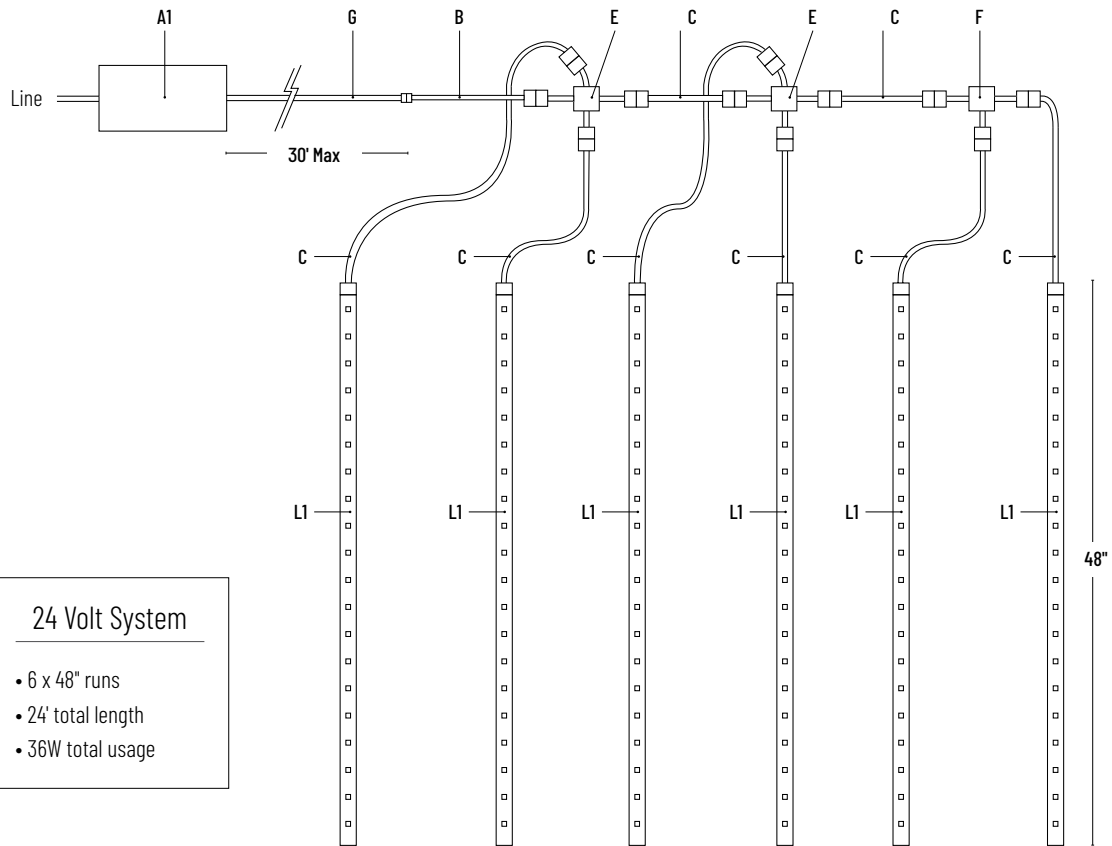
NATL-422B Black
NATL-422W White

Field-cuttable plastic. Includes wire channel with double faced tape and cover.

NUTP1 Series

24V Standard Silicone Encapsulated LED Tape Light - Sample Layout

Type _____
 Project _____
 Catalog No. _____
 Notes _____



24 Volt System

- 6 x 48" runs
- 24' total length
- 36W total usage

| | DESCRIPTION | ITEM # |
|-----------|---------------------------------------------------------------------------------------------------------------------------------------------|----------------------------------------------------------|
| A1 | 24V 60W Dimmable Class II Hardwire LED Driver | NMTD-60/240 |
| B | 24V 9" Power Line Interconnector (one included with each Tape Light roll) | NATL-509 |
| C | 2" Interconnection Cable 6" Interconnection Cable 18" Interconnection Cable 36" Interconnection Cable 72" Interconnection Cable | NATL-202 NATL-206 NATL-218 NATL-236 NATL-272 |
| E | "X" Splitter Cable (1 in & 3 out) | NATL-301 |
| F | "Y" Splitter Cable (1 in & 2 out) | NATL-300 |
| G | 10' Power Line Connector (one included with Class II drivers) 30' Power Line Connector | NALTL-10 NALTL-30 |
| L1 | 24V 48" LED Tape Light Segments (Each NUTP1-W16LED Roll contains (16) 12" detachable sections) | (1) NUTP1-W16LED(CCT) and (8) NUTP1-WLED(CCT)/12 |

*Note: All drivers require power line interconnector to connect to tape.