

# NTE-854

## Jason Square LED Track Head

Source: 38W LED  
2800lm

Type \_\_\_\_\_

Project \_\_\_\_\_

Catalog No. \_\_\_\_\_

Notes \_\_\_\_\_

### PRODUCT DESCRIPTION

Small scale, LED Cylinder Track Fixture delivering up to 2800 lumens. Constructed of extruded and machined aluminum, the heat-sink and integrated driver housing provide a sleek and modern look, designed to quietly compliment any space. Dimming is standard and allows smooth illumination down to 10% precision adjustment. 315° aiming horizontal rotation, 90° vertical rotation. Integral on/off switch and track polarity indicator are standard.

### FEATURES

- 2800lm LED package
- 3500K @ 90 CRI
- Available in spot, narrow flood or flood beam spread
- White finish
- Integral dimmable driver
- Die-cast aluminum construction with deep set COB optics
- Lens holder accommodates one accessory
- Clear glass lens included

### CONSTRUCTION

**Housing:** Die-cast aluminum construction dissipates heat for longer life.

**Optics:** Molded TIR Optic engineered to provide a smooth uniform beam, maximizing output and minimizing glare. Available in spot, medium or flood beam spreads.

**Adjustability:** 315° horizontal and 90° vertical adjustment

### ELECTRICAL

**Input Voltage:** 120V

**Lumens / Wattage:** 2800lm / 38W

**Binning:** 2-Step MacAdam (2 SDCM)

**Color Temperature:** 3500K

**Color Rendering Index:** 90 CRI

**Beam Spread:** 24° spot, 40° narrow flood or 60° flood

**Dimming:** Triac or ELV

[Click Here](#) or check complete dimmer list at [www.NoraLighting.com](http://www.NoraLighting.com) in the "Compatibility" page under "Resources" tab

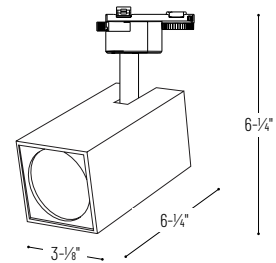
**Accessories:** Luminaire will accommodate (1) glass or louver and (1) snoot, no accessory holder is required.

### LABELS AND LISTINGS

- cULus Listed for dry locations
- [5-Year Limited Warranty](#)



### PRODUCT IMAGES & DIMENSIONS



### Jason Square LED Track Head

Beam Spread

**NTE-85433S935W** = 24° Spot

**NTE-85433M935W** = 40° Narrow Flood

**NTE-85433F935W** = 60° Flood

### Optional Accessories

Description

**NTE-855SN** = Snoot, Black

**NTE-855SNWW** = Directional Shield, Black

**NTE-855HC** = Honeycomb Louver

**NTE-855CG** = Clear Glass

**NTE-855FG** = Frosted Glass

**NT-380B** = Round Monopoint Canopy, Black

**NT-380W** = Round Monopoint Canopy, White

Example: **NTE-85433M935W** = Jason Square LED Track Head, 2800lm / 38W, 40° Narrow Flood, 3500K / 90 CRI, White Finish

# NTE-854

## Jason Square LED Track Head Accessories

Type \_\_\_\_\_  
Project \_\_\_\_\_  
Catalog No. \_\_\_\_\_  
Notes \_\_\_\_\_



Honeycomb Louver

**NTE-855HC**

Adds a honeycomb louver accessory to Jason track head.



Frosted Glass

**NTE-855FG**

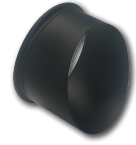
Replaces the clear glass included with Jason track head.



Black Snoot

**NTE-855SN**

Adds a black snoot which reduces glare and spill light.



Black Directional Shield

**NTE-855SNWW**

Directional shield provides 45° cutoff.



Round Monopoint Canopy

**NT-380B**

Black

**NT-380W**

White

Allow track head to be installed as monopoint luminaire.