

NS-41

4" Stepped Baffle with Ring

Type _____

Project _____

Catalog No. _____

Notes _____

FEATURES

Trim: Precision spun 0.040 baffle with deep grooves to reduce aperture glare. Non-reflective painted finishes. Separate trim ring available in plastic or metal, may also be used with custom combination of ring finishes.

Mounting: Trim includes three trim clips that securely mount trim in housing.

COMPATIBLE LAMP / HOUSINGS

Line Voltage:

15W R20/PAR20 max. (NS-401AT/IC)

35W R20/PAR20 max. (NFBIC-4INCATA)

50W R20/PAR20 max. (NS-401QAT; NSIC-401QAT; NSR-404QAT; NSRIC-404QAT)

See individual housing specification sheets for more information.

LABELS AND LISTINGS

* cULus Listed for Damp Location when used with compatible housing



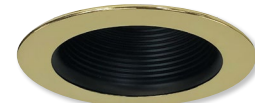
PRODUCT IMAGES & DIMENSIONS



NS-41



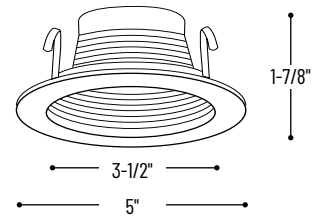
NS-41B



NS-41G



NS-41P



4" Black Stepped Baffle with Ring

Catalog No.

NS-41 = 4" Black Stepped Baffle with White Metal Ring

NS-41B = 4" Black Stepped Baffle with Black Metal Ring

NS-41G = 4" Black Stepped Baffle with Gold Metal Ring

NS-41P = 4" Black Phenolic Stepped Baffle with White Plastic Ring

Compatible Housings

Catalog No.

NFBIC-4INCATA = 2-Hour Fire Rated New Construction / 35W max.

NS-401QAT = Non-IC Air-Tight New Construction / 50W max

NS-401QAT/IC = IC Air-Tight New Construction / 15W max

NSIC-401QAT = IC Air-Tight New Construction / 50W max

NSR-404QAT = Non-IC Air-Tight Remodel / 50W max

NSRIC-404QAT = IC Air-Tight Remodel / 50W max

Example: **NS-41** = 4" Black Stepped Baffle with White Metal Ring