

NRLIN

L-Line LED Recessed Linear

Source: 23W to 82W LED
2100lm to 8400lm

Type
Project
Catalog No.
Notes

PRODUCT DESCRIPTION

Recessed L-Line Series offers a clean and modern appearance with a recessed housing. Symmetrical light distribution will evenly illuminate surfaces with a diffused lens, making the L-Line ideal for commercial, retail, healthcare and education applications.

FEATURES

- 2' to 8' linear luminaires
- 1050 lumens per foot
- 3000K, 3500K, 4000K
- 0-10V dimming
- 120-277V input
- Recessed into ceilings up to 1" thick
- Aluminum or white flange finish

SPECIFICATION

Construction: One piece extruded aluminum housing with solid end caps. Includes diffused polycarbonate lens for symmetrical light distribution.

Mounting: Luminaires include ceiling attachment brackets for mounting.
Minimum ceiling thickness: 0.25" / Maximum ceiling thickness: 1"

Daisy Chain: Luminaires can be connected with continuous run brackets (ordered separately). Bracket allows luminaires to be connected (refer to tables on page 3, 4 and 5).

ELECTRICAL

Input Voltage: 120-277V

Lumens / Wattage:

NRLIN-2 = 2100lm / 23W; **NRLIN-4** = 4200lm / 41W; **NRLIN-8** = 8400lm / 82W

Color Temperature: 3000K, 3500K, 4000K

Color Rendering Index: 80+ CRI

Operating Temperature: 0°C to 30°C

Dimming: 0-10V dimming down to 10%

Maximum Run Length: 80'

OPTIONAL ACCESSORY

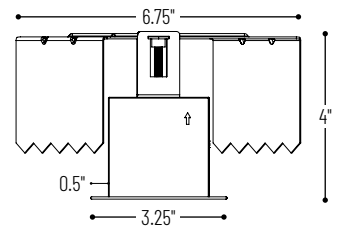
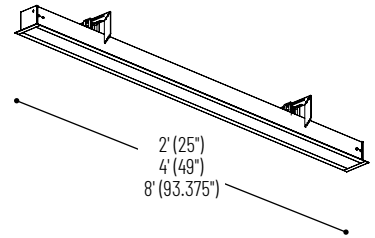
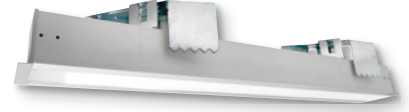
NRLIN-BRKT: Brackets for Continuous Runs

LABELS AND LISTINGS

- cULus Listed for Damp Location
- 5-Year Limited Warranty



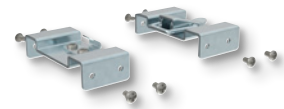
PRODUCT IMAGES & DIMENSIONS



Side View

Ceiling Cut-Out

NRLIN-2: 24.375" x 2.625"
NRLIN-4: 48.375" x 2.625"
NRLIN-8: 92.75" x 2.625"



NRLIN-BRKT

Brackets for Continuous Runs

L-Line LED Recessed Linear

Length	Lumens Per Foot	Color Temp.	Finish
NRLIN-2 = 2' (actual: 25")	10 = 1050lm/ft.	30 = 3000K	A = Aluminum
NRLIN-4 = 4' (actual: 49")		35 = 3500K	W = White
NRLIN-8 = 8' (actual: 93.375")		40 = 4000K	

Optional Accessory

Description
NRLIN-BRKT = Brackets for Continuous Runs

Example: **NRLIN-21030A** = 2' L-Line LED Recessed Linear, 2100lm / 23W, 3000K, Aluminum finish

PHOTOMETRICS

L-Line LED Recessed Linear

Type _____

Project _____

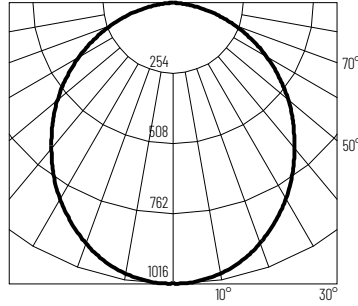
Catalog No. _____

Notes _____

Test Information

Test Number: 12284668.01
 Part Number: NRLIN-21030A
 Lumens: 2637lm
 Wattage: 22W
 Efficacy: 120lpw
 CCT / CRI: 3000K / 80 CRI
 Spacing Criteria (0°-180°): 1.2
 Spacing Criteria (90°-270°): 1.2

Polar Curve



Zonal Lumen Summary

Zone	Lumens	% Luminaire
0-30	763	28.9
0-40	1227	46.5
0-60	2105	79.8
0-90	2637	100
90-180	0	0
0-180	2637	100

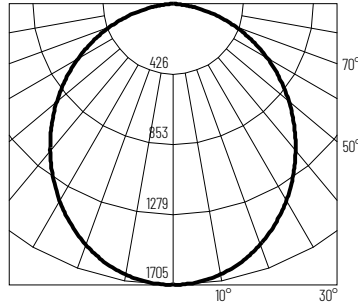
Candela Table

Vertical Angles	Candela
0	1010
5	997
15	949
25	860
35	742
45	607

Test Information

Test Number: 12284668.04
 Part Number: NRLIN-41030A
 Lumens: 4453lm
 Wattage: 38W
 Efficacy: 118lpw
 CCT / CRI: 3000K / 80 CRI
 Spacing Criteria (0°-180°): 1.2
 Spacing Criteria (90°-270°): 1.2

Polar Curve



Zonal Lumen Summary

Zone	Lumens	% Luminaire
0-30	1286	28.9
0-40	2073	46.5
0-60	3562	80
0-90	4453	100
90-180	0	0
0-180	4453	100

Candela Table

Vertical Angles	Candela
0	1700
5	1681
15	1605
25	1460
35	1263
45	1033