

NQZ-41TWTW-MPW

4" Quartz LED Downlight with Selectable Lumens & Selectable CCT

Source: 6W to 15W LED
500lm to 1150lm

PRODUCT DESCRIPTION

Quartz Series series is an architectural and commercial grade LED high lumen downlight. Each luminaire includes two tunable switches; Selectable Lumens allows the end user to determine the wattage input & Selectable CCT changes the color temperature appearance. Reflectors include two tension steel spring clips, which allow the luminaires to install without any frame-in or housing for an easy installation.

FEATURES

- Can-less installation (No frame-in or housing required)
- Easy installation for retrofit, remodel or new construction applications
- Selectable Lumen switch changes output from 500lm to 1150lm
- Selectable CCT switch changes color temperature from 3000K / 3500K / 4000K
- Field changeable reflector allows for easy customization
- 120-277V input and 0-10V dimming
- 5-year limited warranty
- ENERGY STAR certified
- cULus Listed for Wet Locations

SPECIFICATION

Reflector: Aluminum spun reflector with deep set diffused lens for excellent visual comfort while providing high lumen output. Each reflector comes standard with matte powder white finish, optional haze and diffused snap-in reflectors are available and field changeable.

Tunable Switches: Each luminaire includes two switches on the top of the driver enclosure. Selectable Lumen switch changes the lumen output and wattage. Selectable CCT switch changes the color temperature.

Minimum Clearances: Non-IC luminaire requires a minimum clearance of 3" from thermal insulation and 1/2" from adjacent building components.

Mounting: Pre-wired 4" junction box with through branch circuit wiring (3 in / 3 out). No housing is required, two tensions steel spring clips accommodate ceiling thickness from 1/2" to 1-1/4". New construction frame-in available, must specify [NQZ-4R-F](#).

ELECTRICAL

Input Voltage: 120-277V

Lumens / Wattage: Selectable Lumens: 500lm / 6W, 750lm / 9W, 950lm / 12W and 1150lm / 15W

Beam Spread: 83° Wide Flood

Color Temperature: Selectable CCT: 3000K / 3500K / 4000K

Color Rendering Index: 90+CRI

Operating Temperature: 0°C - 45°C

Lifetime: 50,000 hours @ L70

Dimming: Dimmable down to 10% with 0-10V dimmer

[Click Here](#) or check complete dimmer list at www.NoraLighting.com in the "Compatibility" page under "Resources" tab

Optional Emergency: Luminaire includes pre-wired 120-277V emergency battery with remote test switch. Battery operates luminaire at 7W for 90 minute emergency operation with a fully charged battery.

LABELS AND LISTINGS

- cULus Listed for Wet Locations
- ENERGY STAR certified
- [5-Year Limited Warranty](#)
- FCC compliant



Type

Project

Catalog No.

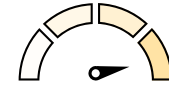
Notes

Performance Data

CCT	6W	9W	12W	15W
3000K	442lm	754lm	984lm	1155lm
3500K	509lm	745lm	963lm	1172lm
4000K	491lm	711lm	922lm	1079lm

Delivered lumens will vary depending on finish

PRODUCT IMAGES AND DIMENSIONS



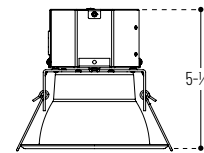
Selectable Lumens

Four position sliding switch
500lm / 750lm / 950lm / 1150lm

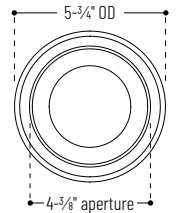


Selectable CCT

Three position sliding switch
3000K / 3500K / 4000K



Ceiling Cut-Out: 4-3/4" Ø



NQZ-41TWTW-MPW / NQZ-41REFLC
4" Quartz with Specular Clear Reflector



NQZ-41TWTW-MPW / NQZ-41REFLD
4" Quartz with Clear Diffused Reflector



NQZ-41TWTW-MPW / NQZ-41REFLHZ
4" Quartz with Haze Reflector

4" Quartz LED Downlight with Selectable Lumens & Selectable CCT

Reflector Type	Lumens / Wattage / Color Temperature	Reflector / Flange Finish	Optional Emergency
NQZ-41 = 4" Open Reflector	TWTW = 500lm / 750lm / 950lm / 1150lm 3000K / 3500K / 4000K	-MPW = Matte Powder White	EM = Emergency with Remote Test Switch

Optional Accessories

Description
NQZ-4R-F = 4" New Construction Frame-In
NQZ-41REFLC = 4" Specular Clear Snap-in Reflector
NQZ-41REFLD = 4" Clear Diffused Snap-in Reflector
NQZ-41REFLHZ = 4" Haze Snap-in Reflector

Example: **NQZ-41TWTW-MPW** = 4" Quartz LED Downlight with Selectable Lumens & Selectable CCT, Matte Powder White

NQZ-41WTW-MPW

4" Quartz LED Downlight Accessories

Type _____
Project _____
Catalog No. _____
Notes _____



New Construction Frame-In Kit

NQZ-4R-F

For new construction pre-wiring and easier layout planning.



Specular Clear Reflector

NQZ-41REFLC

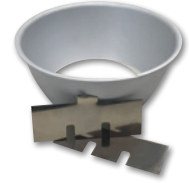
Snap-in reflector is field changeable and fits over 4" Quartz reflector.



Diffused Clear Reflector

NQZ-41REFLD

Snap-in reflector is field changeable and fits over 4" Quartz reflector.



Haze Reflector

NQZ-41REFLHZ

Snap-in reflector is field changeable and fits over 4" Quartz reflector.

PHOTOMETRICS

4" Quartz LED Downlight with Selectable Lumens & Selectable CCT

Type

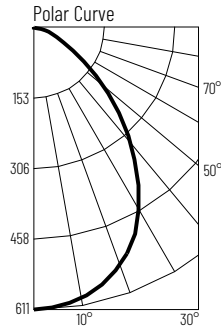
Project

Catalog No.

Notes

Test Information

Test Number: NTR1213
 Part Number: NQZ-41TWTW-MPW
 Beam Spread: 83° Wide Flood
 Lumens: 1155lm
 Wattage: 15.2W
 Efficacy: 76lpw
 CCT / CRI: 3000K / 90 CRI
 Spacing Criteria (0°-180°): 1.14
 Spacing Criteria (90°-270°): 1.14



Illuminance at a Distance

Distance from Luminaire	FC at Nadir	Beam Diameter
4'	38.2fc	7'-2"
6'	17fc	10'-10"
8'	9.6fc	14'-5"
10'	6.1fc	18'
12'	4.2fc	21'-7"

Zonal Lumen Summary

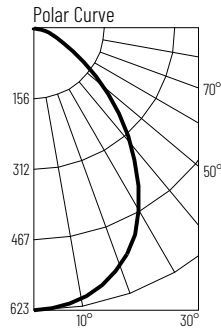
Zone	Lumens	% Luminaire
0-30	452	39.2
0-40	640	55.4
0-60	1032	89.4
0-90	1149	99.5
90-180	6	0.5
0-180	1155	100

Candela Table

Vertical Angles	Candela
0	611
5	607
15	575
25	510
35	398
45	264

Test Information

Test Number: NTR1214
 Part Number: NQZ-41TWTW-MPW
 Beam Spread: 83° Wide Flood
 Lumens: 1172lm
 Wattage: 14.68W
 Efficacy: 80lpw
 CCT / CRI: 3500K / 90 CRI
 Spacing Criteria (0°-180°): 1.14
 Spacing Criteria (90°-270°): 1.14



Illuminance at a Distance

Distance from Luminaire	FC at Nadir	Beam Diameter
4'	38.9fc	7'-1"
6'	17.3fc	10'-8"
8'	9.7fc	14'-2"
10'	6.2fc	17'-10"
12'	4.3fc	21'-5"

Zonal Lumen Summary

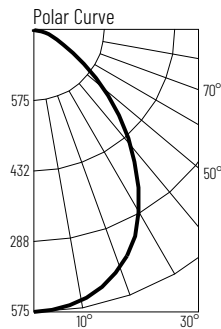
Zone	Lumens	% Luminaire
0-30	460	39.3
0-40	650	55.4
0-60	1048	89.4
0-90	1166	99.5
90-180	6	0.5
0-180	1172	100

Candela Table

Vertical Angles	Candela
0	623
5	618
15	587
25	518
35	401
45	267

Test Information

Test Number: NTR1215
 Part Number: NQZ-41TWTW-MPW
 Beam Spread: 83° Wide Flood
 Lumens: 1079lm
 Wattage: 14.93W
 Efficacy: 72lpw
 CCT / CRI: 4000K / 90 CRI
 Spacing Criteria (0°-180°): 1.14
 Spacing Criteria (90°-270°): 1.14



Illuminance at a Distance

Distance from Luminaire	FC at Nadir	Beam Diameter
4'	36fc	7'-1"
6'	16fc	10'-5"
8'	9fc	14'-2"
10'	5.8fc	17'-8"
12'	4fc	21'-2"

Zonal Lumen Summary

Zone	Lumens	% Luminaire
0-30	424	39.3
0-40	598	55.4
0-60	965	89.4
0-90	1074	99.5
90-180	6	0.5
0-180	1079	100

Candela Table

Vertical Angles	Candela
0	575
5	571
15	542
25	477
35	367
45	245