

# NM4-R470

## 4" M4 Round LED Recessed Elbow

Source: 12W LED  
950lm

### PRODUCT DESCRIPTION

4" M4 Round LED Elbow downlight features an adjustable head that extends 75° and rotates 300° for precise aiming. Quality and convenience with easy installation for insulated or non-insulated applications. Luminaires can be configured into square trim with accessory.

### FEATURES

- No housing required - IC Air-Tight rated
- Field changeable optics included
- Easy installation for remodel or new construction applications
- Square trim available for an alternative appearance
- Quick disconnect allows for extended lengths
- 2700K or 3000K @ 90+ CRI
- Triac or ELV dimming
- 5-year limited warranty
- ENERGY STAR certified
- cETLus Listed for Damp Locations

### SPECIFICATION

**Construction:** Die-cast aluminum trims available in matte black or matte powder white finish. Rotates 300° horizontally and extends up to 75°. Optional field changeable square trim is available.

**Optics:** Each downlight includes field changeable optics (24° spot and 40° narrow flood - preinstalled).

**Air Flow Restriction:** Luminaire has factory installed gasket to restrict airflow from room into ceiling plenum to <2CFM (cubic feet per minute) in accordance with ASTM-283 Air-Tight requirements.

**Clearance:** IC rated luminaires are rated for direct contact with insulation (not spray foam insulation), no minimum clearance is required.

**Junction Box:** Prewired junction box includes quick connect to LED fixtures for ease of installation. Junction box includes four 1/2" trade size knockouts and snap on cover with 7" quick connect wire. Luminaire includes 6" quick connect wire.

**Mounting:** No housing is required, two tensions steel spring clips secure luminaire to ceiling. Accommodates ceiling thickness up to 3/4". New construction frame-in available, see mounting accessories.

### ELECTRICAL

**Input Voltage:** 120V  
**Lumens / Wattage:** 950lm / 12W  
**Color Temperature:** 2700K or 3000K  
**Color Rendering Index:** 90+CRI  
**Beam Spread:** 24° Spot and 40° Narrow Flood (included)  
**Operating Temp.:** 0°C to 25°C ambient temperature  
**Lifetime:** 50,000 hours @ L70  
**Dimming:** Dimmable down to 10% with Triac or ELV  
[Click Here](#) or check complete dimmer list at [www.NoraLighting.com](http://www.NoraLighting.com) in the "Compatibility" page under "Resources" tab

### OPTIONAL TRIM ACCESSORIES

**NM4-SET:** Square Trim for NM4-R470, Black or White

### OPTIONAL MOUNTING ACCESSORIES

**NF-R246:** Universal New Construction Frame-In  
**NFC-R430:** New Construction Frame-In with Collar  
**NM2-EW-4:** 4' Quick Connect Linkable Extension Cable  
**NM2-EW-10:** 10' Quick Connect Linkable Extension Cable

### LABELS AND LISTINGS

- cETLus Listed for Damp Locations
- ENERGY STAR certified
- [5-Year Limited Warranty](#)
- FCC compliant
- Certified to the high efficacy requirements of California Title 24 JA8-2022



Type

Project

Catalog No.

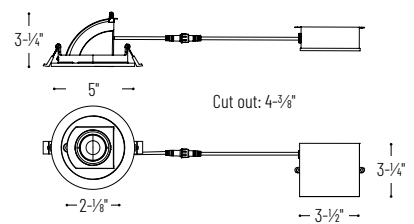
Notes

### Performance Data

Part Number	Lumens	CCT
<b>NM4-R47027BB</b>	887lm	2700K
<b>NM4-R47027MPW</b>	942lm	2700K
<b>NM4-R47030BB</b>	932lm	3000K
<b>NM4-R47030MPW</b>	970lm	3000K

*Delivered lumens will vary depending on optic*

### PRODUCT IMAGES AND DIMENSIONS



**NM4-SET**  
Square Trim

## 4" M4 Round LED Recessed Elbow

Trim Type	Color Temperature	Finish
<b>NM4-R470</b> = 4" Round Elbow	<b>27</b> = 2700K	<b>BB</b> = Matte Black
	<b>30</b> = 3000K	<b>MPW</b> = Matte Powder White

### NM4-R470 Trim Accessories

Accessory Type	Finish
<b>NM4-SET</b> = Square Trim for NM4-R470	<b>B</b> = Matte Black
	<b>MPW</b> = Matte Powder White

### Optional Mounting Accessories

Accessory Type
<b>NF-R246</b> = Universal New Construction Frame-In
<b>NFC-R430</b> = New Construction Frame-In with Collar
<b>NM2-EW-4</b> = 4' Quick Connect Extension Cable
<b>NM2-EW-10</b> = 10' Quick Connect Extension Cable

Example: **NM4-R47030MPW** = 4" M4 Round LED Recessed Elbow, 950lm / 12W, 3000K, Matte Powder White

# NM4-R470

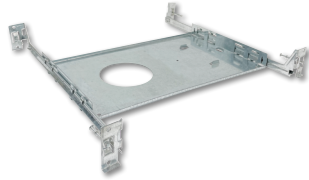
## 4" M4 Round LED Recessed Elbow Accessories

Type \_\_\_\_\_  
Project \_\_\_\_\_  
Catalog No. \_\_\_\_\_  
Notes \_\_\_\_\_



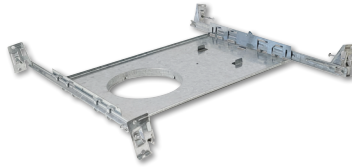
Square Trim for NM4-R470

**NM4-SETB** Matte Black  
**NM4-SETPW** Matte Powder White  
Converts the round trim included with NM4-R470 elbow into a square trim



New Construction Frame-In

**NF-R375**  
For new construction pre-wiring and easier layout planning.



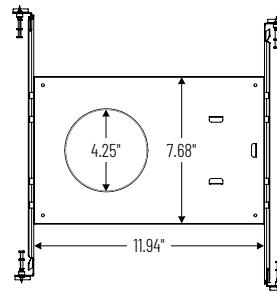
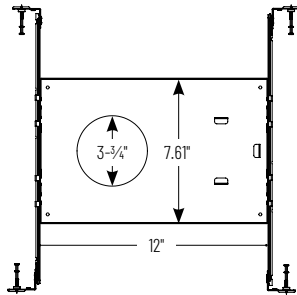
New Construction Frame-In with Collar

**NFC-R430**  
New construction frame-in can be used to assist installing can-less recessed downlighting.



Quick Connect Extension Linkable Cables

**NM2-EW-4** 4' Cable  
**NM2-EW-10** 10' Cable  
Use to extend the length between luminaire and driver enclosure. Can be connected together to create custom lengths. Maximum length between luminaire and driver is 40'.



# PHOTOMETRICS

## NM4-R470

### 4" M4 Round LED Recessed Elbow

Type

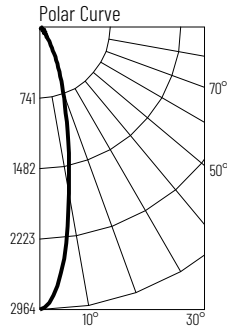
Project

Catalog No.

Notes

#### Test Information

Test Number: NTR1871R1  
 Part Number: NM4-R47027MPW  
 Beam Spread: 24° Spot  
 Lumens: 935lm  
 Wattage: 11.74W  
 Efficacy: 80lpw  
 CCT / CRI: 2700K / 90 CRI  
 Spacing Criteria (0°-180°): 0.42  
 Spacing Criteria (90°-270°): 0.42



#### Illuminance at a Distance

Distance from Luminaire	FC at Nadir	Beam Diameter
4'	185fc	1'-8"
6'	82.2fc	2'-7"
8'	46.2fc	3'-6"
10'	29.6fc	4'-4"
12'	20.5fc	5'-2"

#### Zonal Lumen Summary

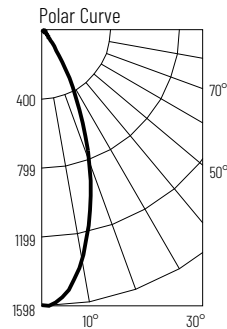
Zone	Lumens	% Luminaire
0-30	721	77
0-40	807	86.2
0-60	899	96.1
0-90	935	100
90-180	0	0
0-180	935	100

#### Candela Table

Vertical Angles	Candela
0	2958
5	2607
15	1124
25	398
35	128
45	67

#### Test Information

Test Number: NTR1872R1  
 Part Number: NM4-R47027MPW  
 Beam Spread: 40° Narrow Flood  
 Lumens: 942lm  
 Wattage: 11.74W  
 Efficacy: 80lpw  
 CCT / CRI: 2700K / 90 CRI  
 Spacing Criteria (0°-180°): 0.66  
 Spacing Criteria (90°-270°): 0.66



#### Illuminance at a Distance

Distance from Luminaire	FC at Nadir	Beam Diameter
4'	99.7fc	3'
6'	44.3fc	4'-5"
8'	24.9fc	5'-11"
10'	15.9fc	7'-5"
12'	11.1fc	8'-11"

#### Zonal Lumen Summary

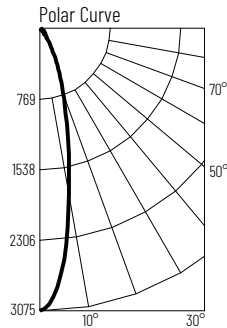
Zone	Lumens	% Luminaire
0-30	697	74
0-40	819	86.9
0-60	912	96.7
0-90	942	100
90-180	0	0
0-180	942	100

#### Candela Table

Vertical Angles	Candela
0	1595
5	1516
15	1076
25	568
35	200
45	66

#### Test Information

Test Number: NTR1875R1  
 Part Number: NM4-R47030MPW  
 Beam Spread: 24° Spot  
 Lumens: 958lm  
 Wattage: 11.51W  
 Efficacy: 83lpw  
 CCT / CRI: 3000K / 90 CRI  
 Spacing Criteria (0°-180°): 0.42  
 Spacing Criteria (90°-270°): 0.42



#### Illuminance at a Distance

Distance from Luminaire	FC at Nadir	Beam Diameter
4'	192fc	1'-8"
6'	85.3fc	2'-7"
8'	48fc	3'-5"
10'	30.7fc	4'-4"
12'	21.3fc	5'-2"

#### Zonal Lumen Summary

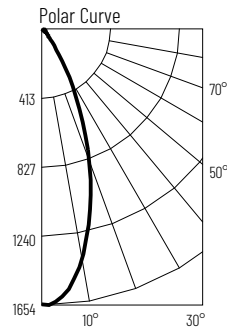
Zone	Lumens	% Luminaire
0-30	733	76.6
0-40	823	85.9
0-60	920	96.1
0-90	958	100
90-180	0	0
0-180	958	100

#### Candela Table

Vertical Angles	Candela
0	3072
5	2688
15	1183
25	449
35	149
45	73

#### Test Information

Test Number: NTR1876R1  
 Part Number: NM4-R47030MPW  
 Beam Spread: 40° Narrow Flood  
 Lumens: 970lm  
 Wattage: 11.56W  
 Efficacy: 84lpw  
 CCT / CRI: 3000K / 90 CRI  
 Spacing Criteria (0°-180°): 0.66  
 Spacing Criteria (90°-270°): 0.66



#### Illuminance at a Distance

Distance from Luminaire	FC at Nadir	Beam Diameter
4'	103fc	2'-11"
6'	45.9fc	4'-5"
8'	25.8fc	5'-11"
10'	16.5fc	7'-4"
12'	11.5fc	8'-10"

#### Zonal Lumen Summary

Zone	Lumens	% Luminaire
0-30	716	73.8
0-40	841	86.7
0-60	939	96.8
0-90	970	100
90-180	0	0
0-180	970	100

#### Candela Table

Vertical Angles	Candela
0	1651
5	1594
15	1120
25	559
35	176
45	56

#### Finish Multiplier

Finish: Black (x0.95), Matte Powder White (x1.0)