

NM2 Series

2" M2 LED Recessed Downlight Series

Source: 6W to 8W LED

400lm to 600lm

Type

Project

Catalog No.

Notes

PRODUCT DESCRIPTION

M2 downlight series features quality and convenience with easy installation for insulated or non-insulated applications. Luminaires can be configured into multiple options with trim accessories and produce up to 600 lumens.

FEATURES

- No housing required - IC Air-Tight rated
- Easy installation for remodel or new construction applications
- Variety of trim accessories to configure desired appearance
- Quick disconnect allows for extended lengths
- 400lm or 600lm LED packages
- 2700K or 3000K @ 90+ CRI
- Triac or ELV dimming
- 5-year limited warranty
- ENERGY STAR certified
- cETLus Listed for Damp Locations

SPECIFICATION

Construction: Die-cast aluminum trims available in matte black or matte powder white finish. Gimbal trim is adjustable up to 15°. Open downlight includes a reflector with the same finish as trim; optional field changeable accessories are available; square trim, pinhole trim, wall wash trim, reflector inserts or baffle inserts.

Air Flow Restriction: Luminaire has factory installed gasket to restrict airflow from room into ceiling plenum to <2CFM (cubic feet per minute) in accordance with ASTM-283 Air-Tight requirements.

Clearance: IC rated luminaires are rated for direct contact with insulation (not spray foam insulation), no minimum clearance is required.

Junction Box: Prewired junction box includes quick connect to LED fixtures for ease of installation. Junction box includes two knockouts and snap on cover with 7" connector length.

Mounting: No housing is required, two tensions steel spring clips secure luminaire to ceiling. Accommodates ceiling thickness up to 3/4". New construction frame-in plate is available, see accessories.

ELECTRICAL

Input Voltage: 120V
Lumens / Wattage:
40 = 400lm / 6W; **60** = 600lm / 8W
Color Temperature: 2700K or 3000K
CRI: 90+CRI
Beam Spread: 38° Flood
Operating Temp.: 0°C to 40°C ambient temperature
Lifetime: 60,000 hours @ L70
Dimming: Triac or ELV
[Click Here](#) or check complete dimmer list at www.NoraLighting.com in the "Compatibility" page under "Resources" tab

Trims: M2 series is available in five core luminaires with LED driver. Round trims can be converted to baffles, pinholes or wall wash with optional trims and inserts.

OPTIONAL TRIM ACCESSORIES

NM2-2REFL: Reflector Insert for NM2-2RDC, Black or Haze
NM2-2BAF: Baffle Insert for NM2-2RDC, Black or White
NM2-2RPH: Round Pinhole Trim for NM2-2RDC, Black or White
NM2-2RW: Round Wall Wash Trim for NM2-2RDC, Black or White
NM2-2SDT: Square Trim for NM2-2RDC, Black or White
NM2-2SGT: Square Trim for NM2-2RG, Black or White

OPTIONAL MOUNTING ACCESSORIES

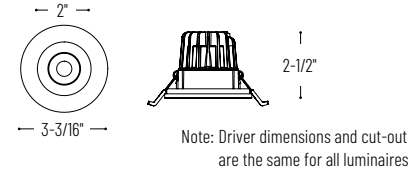
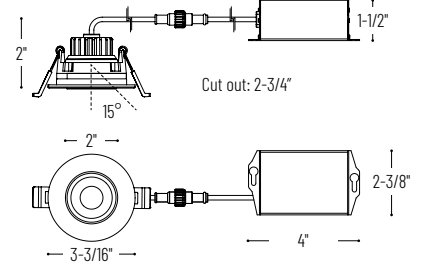
NM2-2R-F: New Construction Frame-In Plate
NM2-EW-4: 4' Quick Connect Linkable Extension Cable
NM2-EW-10: 10' Quick Connect Linkable Extension Cable

LABELS AND LISTINGS

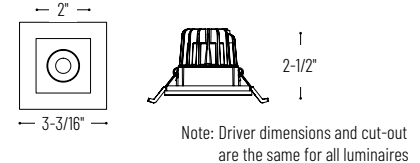
- cETLus Listed for Damp Locations (NM2-2RDCS is rated for Wet Locations)
- ENERGY STAR certified
- [5-Year Limited Warranty](#)
- FCC compliant
- Certified to the high efficacy requirements of California Title 24 JAB-2019



PRODUCT IMAGES AND DIMENSIONS



Note: Driver dimensions and cut-out are the same for all luminaires



Note: Driver dimensions and cut-out are the same for all luminaires

Mini 2" Recessed Downlight Series

Trim Type	Lumens / Wattage	Color Temperature / CRI	Finish
NM2-2RG = 2" Round Gimbal	40 = 400lm / 6W	27 = 2700K / 90 CRI	BB = Matte Black
NM2-2RDC = 2" Round Downlight	60 = 600lm / 8W	30 = 3000K / 90 CRI	MPW = Matte Powder White
NM2-2RDCS = 2" Round Shower (Wet)			
NM2-2SDC = 2" Square Downlight ¹			
NM2-2SB = 2" Square Baffle ¹			

¹ Square trims available in matte powder white and 600lm / 8W only

M2 Trim Accessories

Accessory Type	Finish
NM2-2REFL = Reflector for NM2-2RDC ²	B = Matte Black
NM2-2BAF = Baffle for NM2-2RDC	HZ = Haze (NM2-2REFL only)
NM2-2RPH = Round Pinhole Trim for NM2-2RDC	MPW = Matte Powder White
NM2-2RW = Round Wall Wash Trim for NM2-2RDC	
NM2-2SDT = Square Trim for NM2-2RDC	
NM2-2SGT = Square Trim for NM2-2RG	

² Available in matte black and haze only

Optional Mounting Accessories

Description
NM2-2R-F = New Construction Frame-In Plate
NM2-EW-4 = 4' Quick Connect Extension Cable
NM2-EW-10 = 10' Quick Connect Extension Cable

Example: **NM2-2RDC6030MPW** = Mini 2" Round Downlight, 600lm / 8W, 3000K / 90 CRI, Matte Powder White

NM2-2R

2" M2 LED Recessed Downlight Accessories

Type
Project
Catalog No.
Notes



Reflector Insert for NM2-2RDC

NM2-2REFLB Matte Black
NM2-2REFLHZ Haze
 Replaces the reflector included with NM2-2RDC downlight



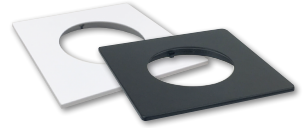
Baffle Insert for NM2-2RDC

NM2-2BAFB Matte Black
NM2-2BAFMPW Matte Powder White
 Replaces the reflector included with NM2-2RDC downlight



Square Trim for NM2-2RDC

NM2-2SDTB Matte Black
NM2-2SDTMPW Matte Powder White
 Converts the round trim included with NM2-2RDC downlight into a square trim



Square Trim for NM2-2RG

NM2-2SGTB Matte Black
NM2-2SGTMPW Matte Powder White
 Converts the round trim included with NM2-2RG gimbal into a square trim



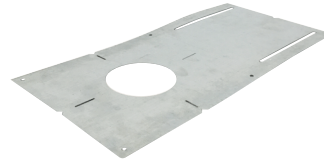
Round Pinhole Trim for NM2-2RDC

NM2-2RPHB Matte Black
NM2-2RPHMPW Matte Powder White
 Converts the round trim included with NM2-2RDC downlight into a round pinhole



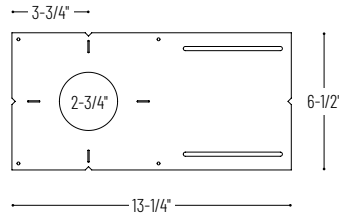
Round Wall Wash Trim for NM2-2RDC

NM2-2RWB Matte Black
NM2-2RWMPW Matte Powder White
 Converts the round trim included with NM2-2RDC downlight into a round wall wash



New Construction Frame-In Plate

NM2-2R-F
 For new construction pre-wiring and easier layout planning.



Quick Connect Extension Linkable Cables

NM2-EW-4 4' Cable
NM2-EW-10 10' Cable
 Use to extend the length between luminaire and driver enclosure. Can be connected together to create custom lengths. Maximum length between luminaire and driver is 40'.

PHOTOMETRICS

2" M2 Recessed Downlight Series

Type

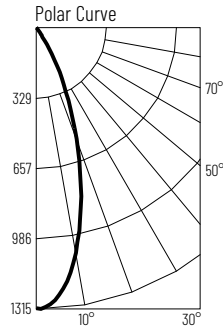
Project

Catalog No.

Notes

Test Information

Test Number: NTR11351
 Part Number: NM2-2RDC6027MPW
 Lumens: 594lm
 Wattage: 7.8W
 Efficacy: 76lpw
 CCT / CRI: 2700K / 90 CRI
 Spacing Criteria (0°-180): 0.62
 Spacing Criteria (90°-270): 0.6



Illuminance at a Distance

Distance from Luminaire	FC at Nadir	Beam Diameter
2'	327fc	1'-4"
4'	81.9fc	2'-8"
6'	36.4fc	4'
8'	20.5fc	5'-5"
10'	13.1fc	6'-8"

Zonal Lumen Summary

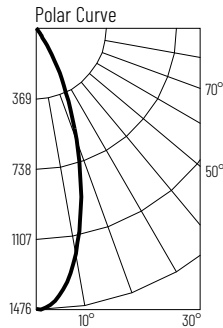
Zone	Lumens	% Luminaire
0-30	505	85
0-40	557	93.7
0-60	582	97.9
0-90	593	99.8
90-180	1	0.2
0-180	594	100

Candela Table

Vertical Angles	Candela
0	1310
5	1251
15	847
25	359
35	85
45	19

Test Information

Test Number: NTR11351
 Part Number: NM2-2RDC6030MPW
 Lumens: 641lm
 Wattage: 8.1W
 Efficacy: 79lpw
 CCT / CRI: 3000K / 90 CRI
 Spacing Criteria (0°-180): 0.6
 Spacing Criteria (90°-270): 0.6



Illuminance at a Distance

Distance from Luminaire	FC at Nadir	Beam Diameter
2'	368fc	1'-4"
4'	92.1fc	2'-7"
6'	40.9fc	3'-11"
8'	23fc	5'-2"
10'	14.7fc	6'-6"

Zonal Lumen Summary

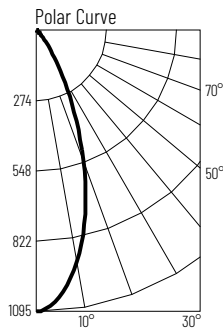
Zone	Lumens	% Luminaire
0-30	547	85.4
0-40	597	93.2
0-60	626	97.8
0-90	639	99.8
90-180	1	0.2
0-180	641	100

Candela Table

Vertical Angles	Candela
0	1473
5	1403
15	909
25	372
35	67
45	21

Test Information

Test Number: NTR11354
 Part Number: NM2-2RG6027MPW
 Lumens: 598lm
 Wattage: 7.7W
 Efficacy: 77lpw
 CCT / CRI: 2700K / 90 CRI
 Spacing Criteria (0°-180): 0.66
 Spacing Criteria (90°-270): 0.66



Illuminance at a Distance

Distance from Luminaire	FC at Nadir	Beam Diameter
2'	274fc	1'-5"
4'	68.5fc	2'-11"
6'	30.4fc	4'-4"
8'	17.1fc	5'-10"
10'	11fc	7'-2"

Zonal Lumen Summary

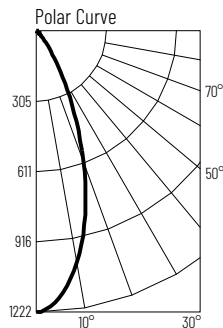
Zone	Lumens	% Luminaire
0-30	465	77.8
0-40	541	90.5
0-60	580	97
0-90	595	99.5
90-180	3	0.5
0-180	598	100

Candela Table

Vertical Angles	Candela
0	1095
5	1046
15	745
25	360
35	117
45	31

Test Information

Test Number: NTR11355
 Part Number: NM2-2RG6030MPW
 Lumens: 658lm
 Wattage: 7.9W
 Efficacy: 83lpw
 CCT / CRI: 3000K / 90 CRI
 Spacing Criteria (0°-180): 0.64
 Spacing Criteria (90°-270): 0.64



Illuminance at a Distance

Distance from Luminaire	FC at Nadir	Beam Diameter
2'	305fc	1'-5"
4'	76.4fc	2'-11"
6'	33.9fc	4'-4"
8'	19.1fc	5'-10"
10'	12.2fc	7'-2"

Zonal Lumen Summary

Zone	Lumens	% Luminaire
0-30	514	78
0-40	596	90.5
0-60	639	97.1
0-90	655	99.5
90-180	3	0.5
0-180	658	100

Candela Table

Vertical Angles	Candela
0	1222
5	1665
15	828
25	393
35	127
45	35

Lumen Output Multiplier: 400lm (0.77)

PHOTOMETRICS

2" M2 Recessed Downlight Series

Type

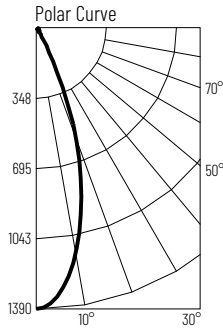
Project

Catalog No.

Notes

Test Information

Test Number: NTR1202
 Part Number: NM2-2SDC6027MPW
 Lumens: 612lm
 Wattage: 8.26W
 Efficacy: 74lpw
 CCT / CRI: 2700K / 90 CRI
 Spacing Criteria (0°-180): 0.6
 Spacing Criteria (90°-270): 0.6



Illuminance at a Distance

Distance from Luminaire	FC at Nadir	Beam Diameter
2'	346fc	1'-4"
4'	86.4fc	2'-7"
6'	38.4fc	3'-11"
8'	21.6fc	5'-2"
10'	13.8fc	6'-6"

Zonal Lumen Summary

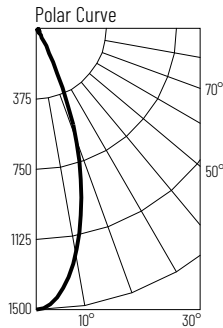
Zone	Lumens	% Luminaire
0-30	513	83.8
0-40	556	90.9
0-60	592	96.9
0-90	610	99.8
90-180	1	0.2
0-180	612	100

Candela Table

Vertical Angles	Candela
0	1383
5	1319
15	868
25	316
35	52
45	24

Test Information

Test Number: NTR1202
 Part Number: NM2-2SDC6030MPW
 Lumens: 629lm
 Wattage: 8.08W
 Efficacy: 78lpw
 CCT / CRI: 3000K / 90 CRI
 Spacing Criteria (0°-180): 0.6
 Spacing Criteria (90°-270): 0.6



Illuminance at a Distance

Distance from Luminaire	FC at Nadir	Beam Diameter
2'	375fc	1'-4"
4'	93.7fc	2'-7"
6'	41.7fc	3'-11"
8'	23.4fc	5'-2"
10'	15fc	6'-6"

Zonal Lumen Summary

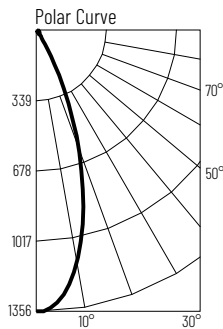
Zone	Lumens	% Luminaire
0-30	537	85.4
0-40	575	91.4
0-60	609	96.9
0-90	626	99.5
90-180	3	0.5
0-180	629	100

Candela Table

Vertical Angles	Candela
0	1500
5	1423
15	934
25	293
35	42
45	22

Test Information

Test Number: NTR1200
 Part Number: NM2-2SB6027MPW
 Lumens: 615lm
 Wattage: 8.24W
 Efficacy: 75lpw
 CCT / CRI: 2700K / 90 CRI
 Spacing Criteria (0°-180): 0.6
 Spacing Criteria (90°-270): 0.62



Illuminance at a Distance

Distance from Luminaire	FC at Nadir	Beam Diameter
2'	339fc	1'-4"
4'	84.7fc	2'-7"
6'	37.7fc	3'-11"
8'	21.2fc	5'-2"
10'	13.6fc	6'-6"

Zonal Lumen Summary

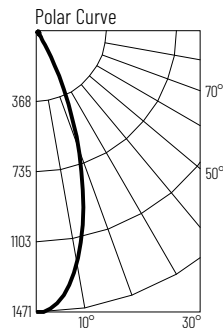
Zone	Lumens	% Luminaire
0-30	513	83.4
0-40	562	91.5
0-60	596	96.9
0-90	612	99.5
90-180	3	0.5
0-180	615	100

Candela Table

Vertical Angles	Candela
0	1356
5	1300
15	859
25	294
35	48
45	20

Test Information

Test Number: NTR1202
 Part Number: NM2-2SB6030MPW
 Lumens: 644lm
 Wattage: 8.18W
 Efficacy: 79lpw
 CCT / CRI: 3000K / 90 CRI
 Spacing Criteria (0°-180): 0.62
 Spacing Criteria (90°-270): 0.62



Illuminance at a Distance

Distance from Luminaire	FC at Nadir	Beam Diameter
2'	367fc	1'-4"
4'	91.8fc	2'-8"
6'	40.8fc	4'
8'	23fc	5'-4"
10'	14.7fc	6'-8"

Zonal Lumen Summary

Zone	Lumens	% Luminaire
0-30	547	85
0-40	587	91.2
0-60	623	96.8
0-90	641	99.5
90-180	3	0.5
0-180	644	100

Candela Table

Vertical Angles	Candela
0	1469
5	1416
15	952
25	328
35	50
45	24

Lumen Output Multiplier: 400lm (0.77)