

# NM2-2SDC

## 2" M2 Square LED Recessed Downlight

Source: 8W or 10W LED  
600lm or 850lm

Type	
Project	
Catalog No.	
Notes	

### PRODUCT DESCRIPTION

M2 downlight series features quality and convenience with easy installation for insulated or non-insulated applications.

### FEATURES

- No housing required - IC Air-Tight rated
- Easy installation for remodel or new construction applications
- Quick disconnect allows for extended lengths
- 600lm or 850lm LED packages
- 2700K or 3000K @ 90+ CRI
- Triac or ELV dimming
- 5-year limited warranty
- ENERGY STAR certified
- cETLus Listed for Wet Locations

### SPECIFICATION

**Construction:** Die-cast aluminum trims available in matte black or matte powder white finish.

**Air Flow Restriction:** Luminaire has factory installed gasket to restrict airflow from room into ceiling plenum to <2CFM (cubic feet per minute) in accordance with ASTM-283 Air-Tight requirements.

**Clearance:** IC rated luminaires are rated for direct contact with insulation (not spray foam insulation), no minimum clearance is required.

**Junction Box:** Prewired junction box includes quick connect to LED fixtures for ease of installation. Junction box includes two (600lm) or four (850lm) 1/2" trade size knockouts and snap on cover with 7" quick connect wire. Luminaire includes 5" (600lm) or 4" (850lm) quick connect wire.

**Mounting:** No housing is required, two tensions steel spring clips secure luminaire to ceiling. Accommodates ceiling thickness up to 3/4". New construction frame-in kits are available, see accessories.

ELECTRICAL	60	85
Input Voltage	120V	
Input Power	8W	10W
Color Temperature	2700K or 3000K	
Color Rendering Index	90+ CRI	
Dimming	Triac / ELV	
Operating Temperature	0°C to 40°C	0°C to 25°C
Beam Spread	36° Flood	
Lifetime	60,000 hours @ L70	

### OPTIONAL MOUNTING ACCESSORIES

- [NF-R246](#): Universal New Construction Frame-In
- [NFC-R275](#): New Construction Frame-In with Collar
- [NM2-EW-4](#): 4' Quick Connect Linkable Extension Cable
- [NM2-EW-10](#): 10' Quick Connect Linkable Extension Cable

### LABELS AND LISTINGS

- cETLus Listed for Wet Locations
- ENERGY STAR certified
- [5-Year Limited Warranty](#)
- FCC compliant
- Certified to the high efficacy requirements of California Title 24 JA8-2022

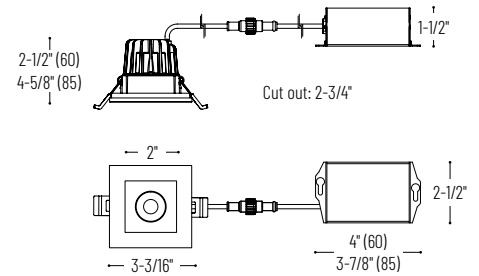


### PRODUCT IMAGES AND DIMENSIONS



**NM2-2SDC60XXMPW**  
600lm  
Matte Powder White

**NM2-2SDC85XXBB**  
850lm  
Matte Black



## 2" M2 Square LED Recessed Downlight

Trim Type	Lumens / Wattage	Color Temperature	Finish
<b>NM2-2SDC</b> = 2" Square Downlight	<b>60</b> = 600lm / 8W	<b>27</b> = 2700K	<b>BB</b> = Matte Black
	<b>85</b> = 850lm / 10W	<b>30</b> = 3000K	<b>MPW</b> = Matte Powder White

## Optional Mounting Accessories

Description
<b>NF-R246</b> = Universal New Construction Frame-In
<b>NFC-R275</b> = New Construction Frame-In with Collar
<b>NM2-EW-4</b> = 4' Quick Connect Extension Cable
<b>NM2-EW-10</b> = 10' Quick Connect Extension Cable

Example: **NM2-2SDC6030MPW** = 2" M2 Square LED Recessed Downlight, 600lm / 8W, 3000K, Matte Powder White

# NM2-2SDC

## 2" M2 Square LED Recessed Downlight Accessories

Type \_\_\_\_\_

Project \_\_\_\_\_

Catalog No. \_\_\_\_\_

Notes \_\_\_\_\_



Universal New Construction Frame-In

### NF-R246

Universal new construction frame-in can be used to assist installing can-less recessed downlighting.



New Construction Frame-In with Collar

### NFC-R275

New construction frame-in can be used to assist installing can-less recessed downlighting.



Quick Connect Extension Linkable Cables

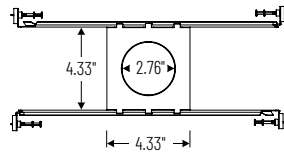
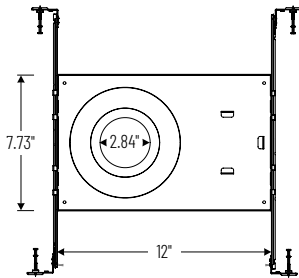
### NM2-EW-4

4' Cable

### NM2-EW-10

10' Cable

Use to extend the length between luminaire and driver enclosure. Can be connected together to create custom lengths. Maximum length between luminaire and driver is 40'.



# PHOTOMETRICS

## 2" M2 Square LED Recessed Downlight

Type

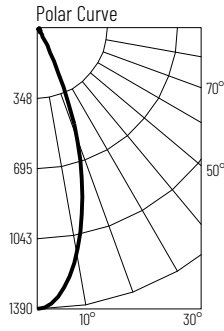
Project

Catalog No.

Notes

### Test Information

Test Number: NTR1198  
 Part Number: NM2-2SDC6027MPW  
 Beam Spread: 36° Flood  
 Lumens: 612lm  
 Wattage: 8.26W  
 Efficacy: 74lpw  
 CCT / CRI: 2700K / 90 CRI  
 Spacing Criteria (0°-180°): 0.6  
 Spacing Criteria (90°-270°): 0.6



### Illuminance at a Distance

Distance from Luminaire	FC at Nadir	Beam Diameter
2'	346fc	1'-4"
4'	86.4fc	2'-7"
6'	38.4fc	3'-11"
8'	21.6fc	5'-2"
10'	13.8fc	6'-7"

### Zonal Lumen Summary

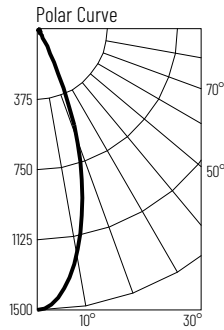
Zone	Lumens	% Luminaire
0-30	513	83.8
0-40	556	90.9
0-60	592	96.9
0-90	610	99.8
90-180	1	0.2
0-180	612	100

### Candela Table

Vertical Angles	Candela
0	1383
5	1319
15	868
25	316
35	52
45	24

### Test Information

Test Number: NTR1202  
 Part Number: NM2-2SDC6030MPW  
 Beam Spread: 36° Flood  
 Lumens: 629lm  
 Wattage: 8.08W  
 Efficacy: 78lpw  
 CCT / CRI: 3000K / 90 CRI  
 Spacing Criteria (0°-180°): 0.6  
 Spacing Criteria (90°-270°): 0.6



### Illuminance at a Distance

Distance from Luminaire	FC at Nadir	Beam Diameter
2'	375fc	1'-4"
4'	93.7fc	2'-7"
6'	41.7fc	3'-11"
8'	23.4fc	5'-2"
10'	15fc	6'-6"

### Zonal Lumen Summary

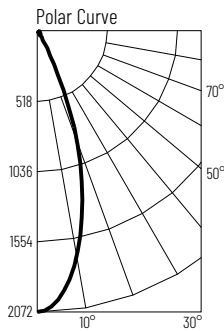
Zone	Lumens	% Luminaire
0-30	537	85.4
0-40	575	91.4
0-60	609	96.9
0-90	626	99.5
90-180	3	0.5
0-180	629	100

### Candela Table

Vertical Angles	Candela
0	1500
5	1423
15	934
25	293
35	42
45	22

### Test Information

Test Number: NTR1500  
 Part Number: NM2-2SDC8530MPW  
 Beam Spread: 36° Flood  
 Lumens: 869lm  
 Wattage: 10.18W  
 Efficacy: 85lpw  
 CCT / CRI: 3000K / 90 CRI  
 Spacing Criteria (0°-180°): 0.6  
 Spacing Criteria (90°-270°): 0.6



### Illuminance at a Distance

Distance from Luminaire	FC at Nadir	Beam Diameter
2'	518fc	1'-4"
4'	130fc	2'-7"
6'	57.6fc	3'-11"
8'	32.4fc	5'-2"
10'	20.7fc	6'-6"

### Zonal Lumen Summary

Zone	Lumens	% Luminaire
0-30	748	86.1
0-40	799	92
0-60	844	97.2
0-90	867	99.8
90-180	2	0.2
0-180	869	100

### Candela Table

Vertical Angles	Candela
0	2072
5	1968
15	1286
25	429
35	56
45	29