

NM2-2SB

2" M2 Square LED Recessed Baffle

Source: 8W or 10W LED
600lm or 850lm

Type
Project
Catalog No.
Notes

PRODUCT DESCRIPTION

M2 downlight series features quality and convenience with easy installation for insulated or non-insulated applications.

FEATURES

- No housing required - IC Air-Tight rated
- Easy installation for remodel or new construction applications
- Quick disconnect allows for extended lengths
- 600lm or 850lm LED packages
- 2700K or 3000K @ 90+ CRI
- Triac or ELV dimming
- 5-year limited warranty
- ENERGY STAR certified
- cETLus Listed for Wet Locations

SPECIFICATION

Construction: Die-cast aluminum trims available in matte black or matte powder white finish.

Air Flow Restriction: Luminaire has factory installed gasket to restrict airflow from room into ceiling plenum to <2CFM (cubic feet per minute) in accordance with ASTM-283 Air-Tight requirements.

Clearance: IC rated luminaires are rated for direct contact with insulation (not spray foam insulation), no minimum clearance is required.

Junction Box: Prewired junction box includes quick connect to LED fixtures for ease of installation. Junction box includes two (600lm) or four (850lm) 1/2" trade size knockouts and snap on cover with 7" quick connect wire. Luminaire includes 5" (600lm) or 4" (850lm) quick connect wire.

Mounting: No housing is required, two tensions steel spring clips secure luminaire to ceiling. Accommodates ceiling thickness up to 3/4". New construction frame-in kits are available, see accessories.

ELECTRICAL	60	85
Input Voltage	120V	
Input Power	8W	10W
Color Temperature	2700K or 3000K	
Color Rendering Index	90+ CRI	
Dimming	Triac / ELV	
Operating Temperature	0°C to 40°C	0°C to 25°C
Beam Spread	37° Flood	
Lifetime	60,000 hours @ L70	

OPTIONAL MOUNTING ACCESSORIES

- [NF-R246](#): Universal New Construction Frame-In
- [NFC-R275](#): New Construction Frame-In with Collar
- [NM2-EW-4](#): 4' Quick Connect Linkable Extension Cable
- [NM2-EW-10](#): 10' Quick Connect Linkable Extension Cable

LABELS AND LISTINGS

- cETLus Listed for Wet Locations
- ENERGY STAR certified
- [5-Year Limited Warranty](#)
- FCC compliant
- Certified to the high efficacy requirements of California Title 24 JA8-2022

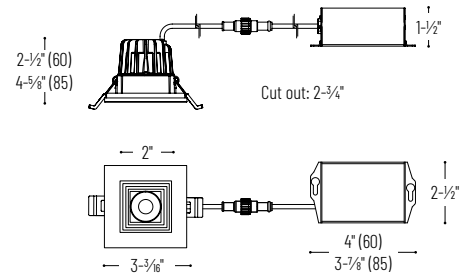


PRODUCT IMAGES AND DIMENSIONS



NM2-2SB60XXMPW
600lm
Matte Powder White

NM2-2SB85XXBB
850lm
Matte Black



2" M2 Square LED Recessed Baffle

Trim Type	Lumens / Wattage	Color Temperature	Finish
NM2-2SB = 2" Square Baffle	60 = 600lm / 8W	27 = 2700K	BB = Matte Black
	85 = 850lm / 10W	30 = 3000K	MPW = Matte Powder White

Optional Mounting Accessories

Description
NF-R246 = Universal New Construction Frame-In
NFC-R275 = New Construction Frame-In with Collar
NM2-EW-4 = 4' Quick Connect Extension Cable
NM2-EW-10 = 10' Quick Connect Extension Cable

Example: **NM2-2SB6030MPW** = 2" M2 Square LED Recessed Baffle, 600lm / 8W, 3000K, Matte Powder White

NM2-2SB

2" M2 Square LED Recessed Baffle Accessories

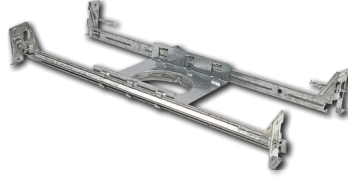
Type	_____
Project	_____
Catalog No.	_____
Notes	_____



Universal New Construction Frame-In

NF-R246

Universal new construction frame-in can be used to assist installing can-less recessed downlighting.



New Construction Frame-In with Collar

NFC-R275

New construction frame-in can be used to assist installing can-less recessed downlighting.



Quick Connect Extension Linkable Cables

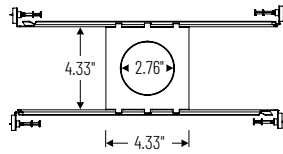
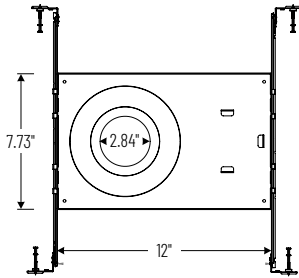
NM2-EW-4

4' Cable

NM2-EW-10

10' Cable

Use to extend the length between luminaire and driver enclosure. Can be connected together to create custom lengths. Maximum length between luminaire and driver is 40'.



PHOTOMETRICS

2" M2 Square LED Recessed Baffle

Type

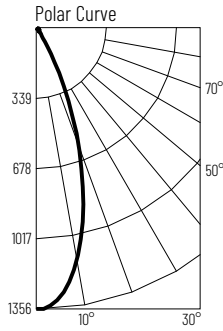
Project

Catalog No.

Notes

Test Information

Test Number: NTR1200
 Part Number: NM2-2SB6027MPW
 Beam Spread: 37° Flood
 Lumens: 615lm
 Wattage: 8.24W
 Efficacy: 75lpw
 CCT / CRI: 2700K / 90 CRI
 Spacing Criteria (0°-180°): 0.6
 Spacing Criteria (90°-270°): 0.62



Illuminance at a Distance

Distance from Luminaire	FC at Nadir	Beam Diameter
2'	339fc	1'-4"
4'	84.7fc	2'-7"
6'	37.7fc	3'-11"
8'	21.2fc	5'-2"
10'	13.6fc	6'-6"

Zonal Lumen Summary

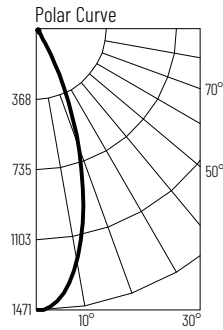
Zone	Lumens	% Luminaire
0-30	513	83.4
0-40	562	91.5
0-60	596	96.9
0-90	612	99.5
90-180	3	0.5
0-180	615	100

Candela Table

Vertical Angles	Candela
0	1356
5	1300
15	859
25	294
35	48
45	20

Test Information

Test Number: NTR1201
 Part Number: NM2-2SB6030MPW
 Beam Spread: 37° Flood
 Lumens: 644lm
 Wattage: 8.18W
 Efficacy: 79lpw
 CCT / CRI: 3000K / 90 CRI
 Spacing Criteria (0°-180°): 0.62
 Spacing Criteria (90°-270°): 0.62



Illuminance at a Distance

Distance from Luminaire	FC at Nadir	Beam Diameter
2'	367fc	1'-4"
4'	91.8fc	2'-8"
6'	40.8fc	4'
8'	23fc	5'-4"
10'	14.7fc	6'-8"

Zonal Lumen Summary

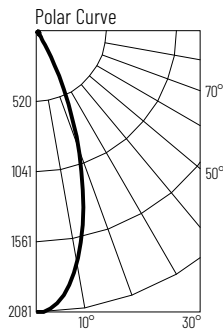
Zone	Lumens	% Luminaire
0-30	547	85
0-40	587	91.2
0-60	623	96.8
0-90	641	99.5
90-180	3	0.5
0-180	644	100

Candela Table

Vertical Angles	Candela
0	1469
5	1416
15	952
25	327
35	50
45	24

Test Information

Test Number: NTR1501
 Part Number: NM2-2SB8530MPW
 Beam Spread: 36° Flood
 Lumens: 873lm
 Wattage: 10.13W
 Efficacy: 86lpw
 CCT / CRI: 3000K / 90 CRI
 Spacing Criteria (0°-180°): 0.6
 Spacing Criteria (90°-270°): 0.6



Illuminance at a Distance

Distance from Luminaire	FC at Nadir	Beam Diameter
2'	519fc	1'-4"
4'	130fc	2'-7"
6'	57.7fc	3'-11"
8'	32.5fc	5'-2"
10'	20.8fc	6'-5"

Zonal Lumen Summary

Zone	Lumens	% Luminaire
0-30	748	85.6
0-40	799	91.5
0-60	846	96.9
0-90	872	99.8
90-180	2	0.2
0-180	873	100

Candela Table

Vertical Angles	Candela
0	2077
5	1971
15	1288
25	421
35	56
45	31