

NM2-2RDCS

2" M2 Round LED Recessed Lensed Downlight

Source: 6W, 8W or 10W LED
400lm, 600lm or 850lm

Type	
Project	
Catalog No.	
Notes	

PRODUCT DESCRIPTION

M2 downlight series features quality and convenience with easy installation for insulated or non-insulated applications.

FEATURES

- No housing required - IC Air-Tight rated
- Easy installation for remodel or new construction applications
- Quick disconnect allows for extended lengths
- 400lm, 600lm or 850lm LED packages
- 2700K or 3000K @ 90+ CRI
- Triac or ELV dimming
- 5-year limited warranty
- cETLus Listed for Wet Locations

SPECIFICATION

Construction: Die-cast aluminum trims available in matte black or matte powder white finish. Frosted lens included with matching reflector finish as trim.

Air Flow Restriction: Luminaire has factory installed gasket to restrict airflow from room into ceiling plenum to <2CFM (cubic feet per minute) in accordance with ASTM-283 Air-Tight requirements.

Clearance: IC rated luminaires are rated for direct contact with insulation (not spray foam insulation), no minimum clearance is required.

Junction Box: Prewired junction box includes quick connect to LED fixtures for ease of installation. Junction box includes two (400lm/600lm) or four (850lm) ½" trade size knockouts and snap on cover with 7" quick connect wire. Luminaire includes 5" (400lm/600lm) or 4" (850lm) quick connect wire.

Mounting: No housing is required, two tensions steel spring clips secure luminaire to ceiling. Accommodates ceiling thickness up to ¾". New construction frame-in kits are available, see accessories.

ELECTRICAL	40	60	85
Input Voltage	120V		
Input Power	6W	8W	10W
Color Temperature	2700K or 3000K	2700K, 3000K, 4000K	2700K or 3000K
CRI	90+ CRI		
Dimming	Triac / ELV		
Operating Temp.	40°C max.		25°C max.
Beam Spread	36° Flood		
Lifetime	60,000 hours @ L70		

OPTIONAL MOUNTING ACCESSORIES

- [NM2-MLS1](#): One Head Multiple Lighting System Plate
- [NM2-MLS2](#): Two Head Multiple Lighting System Plate
- [NM2-MLS3](#): Three Head Multiple Lighting System Plate
- [NF-R246](#): Universal New Construction Frame-In
- [NFC-R275](#): New Construction Frame-In with Collar
- [NM2-EW-4](#): 4' Quick Connect Linkable Extension Cable
- [NM2-EW-10](#): 10' Quick Connect Linkable Extension Cable

LABELS AND LISTINGS

- cETLus Listed for Wet Locations
- [5-Year Limited Warranty](#)
- FCC compliant
- Certified to the high efficacy requirements of California Title 24 JA8-2022

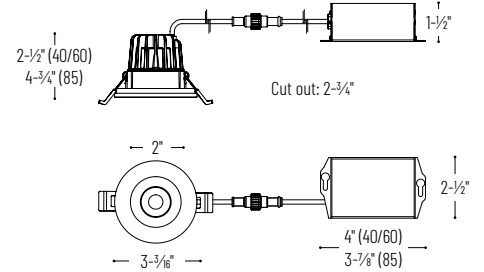


PRODUCT IMAGES AND DIMENSIONS



NM2-2RDCSXXXBB
400lm or 600lm
Matte Black

NM2-2RDCS85XXMPW
850lm
Matte Powder White



2" M2 Round LED Recessed Lensed Downlight

Trim Type	Lumens / Wattage	Color Temperature	Finish
NM2-2RDCS = 2" Round Lensed Downlight	40 = 400lm / 6W	27 = 2700K	BB = Matte Black
	60 = 600lm / 8W	30 = 3000K	MPW = Matte Powder White
	85 = 850lm / 10W		
	60 = 600lm / 8W	40 = 4000K	MPW = Matte Powder White

Optional Mounting Accessories

Accessory Type	Finish
NM2-MLS1 = One Head MLS Plate	BB = Matte Black
NM2-MLS2 = Two Head MLS Plate	MPW = Matte Powder White
NM2-MLS3 = Three Head MLS Plate	
NF-R246 = Universal New Construction Frame-In	
NFC-R275 = New Construction Frame-In with Collar	
NM2-EW-4 = 4' Quick Connect Extension Cable	
NM2-EW-10 = 10' Quick Connect Extension Cable	

Example: **NM2-2RDCS6030MPW** = 2" M2 Round LED Recessed Lensed Downlight, 600lm / 8W, 3000K, Matte Powder White

NM2-2RDCS

2" M2 Round LED Recessed Lensed Downlight Accessories

Type	_____
Project	_____
Catalog No.	_____
Notes	_____



One Head Multiple Lighting System Plate

NM2-MLS1B 1 Head / Matte Black
NM2-MLS1PW 1 Head / Matte Powder White
 Converts one round LED luminaire into multiple lighting system without a large housing.



Two Head Multiple Lighting System Plate

NM2-MLS2B 2 Head / Matte Black
NM2-MLS2MPW 2 Head / Matte Powder White
 Converts two round LED luminaires into multiple lighting system without a large housing.



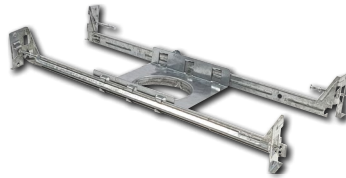
Three Head Multiple Lighting System Plate

NM2-MLS3B 3 Head / Matte Black
NM2-MLS3MPW 3 Head / Matte Powder White
 Converts three round LED luminaires into multiple lighting system without a large housing.



Universal New Construction Frame-In

NF-R246
 Universal new construction frame-in can be used to assist installing can-less recessed downlighting.



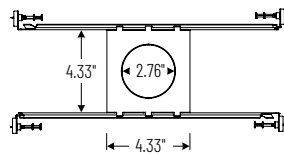
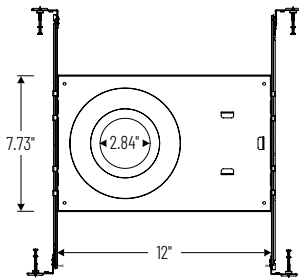
New Construction Frame-In with Collar

NFC-R275
 New construction frame-in can be used to assist installing can-less recessed downlighting.



Quick Connect Extension Linkable Cables

NM2-EW-4 4' Cable
NM2-EW-10 10' Cable
 Use to extend the length between luminaire and driver enclosure. Can be connected together to create custom lengths. Maximum length between luminaire and driver is 40'.



PHOTOMETRICS

2" M2 Round LED Recessed Lensed Downlight

Type

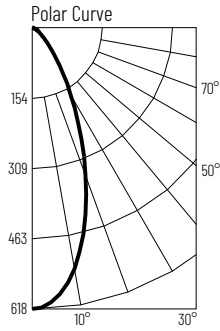
Project

Catalog No.

Notes

Test Information

Test Number: NTR1506
 Part Number: NM2-2RDCS4030MPW
 Beam Spread: 44° Flood
 Lumens: 450lm
 Wattage: 7.08W
 Efficacy: 63lpw
 CCT / CRI: 3000K / 90 CRI
 Spacing Criteria (0°-180°): 0.7
 Spacing Criteria (90°-270°): 0.7



Illuminance at a Distance

Distance from Luminaire	FC at Nadir	Beam Diameter
2'	154fc	1'-7"
4'	38.6fc	3'-2"
6'	17.2fc	4'-10"
8'	9.7fc	6'-5"
10'	6.2fc	8'

Zonal Lumen Summary

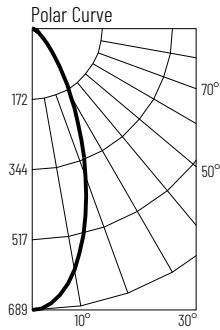
Zone	Lumens	% Luminaire
0-30	293	65.1
0-40	366	81.3
0-60	427	95
0-90	449	99.9
90-180	0	0.1
0-180	450	100

Candela Table

Vertical Angles	Candela
0	618
5	596
15	446
25	249
35	114
45	50

Test Information

Test Number: NTR1505
 Part Number: NM2-2RDCS6030MPW
 Beam Spread: 44° Flood
 Lumens: 505lm
 Wattage: 8.1W
 Efficacy: 62lpw
 CCT / CRI: 3000K / 90 CRI
 Spacing Criteria (0°-180°): 0.7
 Spacing Criteria (90°-270°): 0.7



Illuminance at a Distance

Distance from Luminaire	FC at Nadir	Beam Diameter
2'	172fc	1'-7"
4'	43.1fc	3'-2"
6'	19.1fc	4'-10"
8'	10.8fc	6'-5"
10'	6.9fc	8'

Zonal Lumen Summary

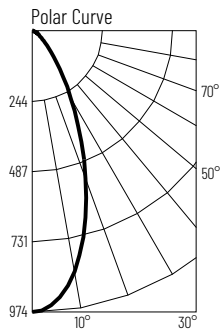
Zone	Lumens	% Luminaire
0-30	328	65
0-40	410	81.2
0-60	479	95
0-90	504	99.9
90-180	0	0.1
0-180	505	100

Candela Table

Vertical Angles	Candela
0	689
5	666
15	501
25	280
35	129
45	57

Test Information

Test Number: NTR1504
 Part Number: NM2-2RDCS8530MPW
 Beam Spread: 44° Flood
 Lumens: 725lm
 Wattage: 10W
 Efficacy: 72lpw
 CCT / CRI: 3000K / 90 CRI
 Spacing Criteria (0°-180°): 0.7
 Spacing Criteria (90°-270°): 0.7



Illuminance at a Distance

Distance from Luminaire	FC at Nadir	Beam Diameter
2'	244fc	1'-7"
4'	60.9fc	3'-2"
6'	27.1fc	4'-10"
8'	15.2fc	6'-5"
10'	9.7fc	8'-1"

Zonal Lumen Summary

Zone	Lumens	% Luminaire
0-30	466	64.3
0-40	583	80.5
0-60	686	94.7
0-90	724	99.9
90-180	1	0.1
0-180	725	100

Candela Table

Vertical Angles	Candela
0	974
5	945
15	710
25	396
35	184
45	84