

# NLCBC-569

## 5" Cobalt LED Adjustable Retrofit

Source: 14W LED

Up to 1200lm

### PRODUCT DESCRIPTION

Cobalt retrofit series is cULus classified for use in existing IC or Non-IC housings manufactured by Nora and others. Patented adjustable mechanism rotates and adjusts while never exposing an opening or breaking the ceiling plane. Retrofit luminaires deliver up to 1200 lumens in various color temperature options. Cobalt series integrates the latest COB LED technology, giving bright spectacular light output and low power consumption.

### FEATURES

- Retrofit existing 5" recessed housings
- Field adjustable beam spreads (flood installed, spot and narrow flood included)
- Up to 1200 lumen output
- 2700K, 3000K, 3500K or 4000K @ 90+ CRI
- COB LED Technology
- Integral dimmable driver
- Includes medium base socket adapter
- ENERGY STAR certified

### SPECIFICATION

**Trim:** Aluminum spun reflector with deep set diffused lens for excellent visual comfort while providing high lumen output. Adjustable design rotates and adjusts while never exposing an opening or breaking the ceiling plane. Reflector places the LED optics deeper than the standard increasing the visual comfort. Additionally the deep cones reduces board images when off.

**Adjustability:** 358° rotate and 30° tilt

**Optics:** Spot (included), Medium (included) and Flood optic (installed)

**Lens:** Frosted Lens (installed) and Semi-Frosted Lens (included)

### ELECTRICAL

**Input Voltage:** 120V

**Lumens / Wattage:** Up to 1200lm / 14W

(Delivered lumens will vary depending on CCT, optic & finish)

**Color Temperature:** 2700K, 3000K, 3500K or 4000K

**Color Rendering Index:** 90+CRI

**Beam Spread:** 23° Spot, 50° Narrow Flood, 99° Flood

**Operating Temperature:** 0°C to 25°C

**Life Expectancy:** 54,000 Hours @ L70

**Dimming:** Triac or ELV

**Click Here** or check complete dimmer list at

www.NoraLighting.com in the "Compatibility" page under "Resources" tab

### COMPATIBLE HOUSINGS

Cobalt retrofit reflectors are compatible with most 5" IC and Non-IC housings by Nora and others.

#### Fire Box

[NFBIC-5LMRATA\\*](#)

ICAT Dedicated LED

[NFBIC-5INCATA](#)

ICAT Line Voltage

#### New Construction

[NHIC-527LMRAT\\*](#)

Shallow ICAT Dedicated LED

[NHIC-5LMRAT\\*](#)

ICAT Dedicated LED

[NHIC-5LMRAT/EM\\*](#)

ICAT Dedicated LED for EM

[NHIC-5LMRAT/277\\*](#)

ICAT Dedicated LED, 277V

(includes step-down transformer)

[NHIC-527OAT](#)

Shallow ICAT Line Voltage

[NHIC-501OAT](#)

ICAT Line Voltage

[NH-501Q](#)

Non-IC Line Voltage

[NHIC-5G24ATFL](#)

ICAT GU24

#### Remodel

[NHRIC-527LMRAT\\*](#)

Shallow ICAT Dedicated LED

[NHRIC-5LMRAT\\*](#)

ICAT Dedicated LED

[NHRIC-527OAT](#)

Shallow ICAT Line Voltage

[NHRIC-504OAT](#)

ICAT Line Voltage

[NHR-504Q](#)

Non-IC Line Voltage

\* Nora Dedicated LED housings are cULus listed for use only with Nora LED Retrofits.

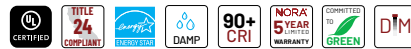
**Retrofit:** Cobalt retrofit series includes medium base screw-socket adapter ([NRA-21ISM](#)) for retrofitting into existing medium base downlight housings. GU24 socket adapter is available for use with GU24 housings, must specify [NRA-212SM](#).

### ACCESSORIES

[NLCBC-569TIR15](#): 15° Premium TIR optics, must specify ring finish.

### LABELS AND LISTINGS

- cULus classified for Damp Location when used with compatible housing
- Suitable for Type IC and Non-IC
- Certified to the high efficacy requirements of California Title 24 JA8-2022
- ENERGY STAR certified (not BB or BZBZ finish)
- RoHS Compliant
- 5-Year Limited Warranty



Type

Project

Catalog No.

Notes

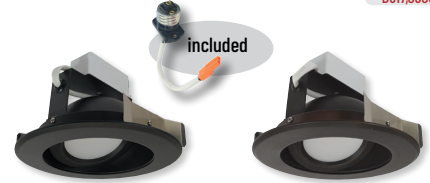
### Performance Data

Part Number	Lumens	CCT
<a href="#">NLCBC-56927XWW</a>	1092lm	2700K
<a href="#">NLCBC-56930XWW</a>	1203lm	3000K
<a href="#">NLCBC-56935XWW</a>	1206lm	3500K
<a href="#">NLCBC-56940XWW</a>	1254lm	4000K

Delivered lumens will vary depending on CCT, optic and finish

### PRODUCT IMAGES & DIMENSIONS

PATENT No.:  
D917,090S



**BB**

Black Reflector  
Black Flange

**BZBZ**

Bronze Reflector  
Bronze Flange



**HZN**

Haze Reflector  
Natural Metal Flange



**HZW**

Haze Reflector  
White Flange



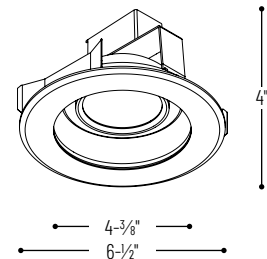
**MPW**

Matte Powder White Reflector  
Matte Powder White Flange



**WW**

White Reflector  
White Flange



## 5" Cobalt LED Adjustable Retrofit

Color Temperature	Reflector Finish / Flange Finish	Dimming & Emergency
<a href="#">NLCBC-56927X</a> = 2700K	<b>BB</b> = Black Reflector / Black Flange	<b>(blank)</b> = 120V Triac/ELV
<a href="#">NLCBC-56930X</a> = 3000K	<b>BZBZ</b> = Bronze Reflector/ Bronze Flange	<b>EM</b> = Remote Emergency (requires Nora EM housing)
<a href="#">NLCBC-56935X</a> = 3500K	<b>HZN</b> = Haze Reflector/ Natural Metal Flange	
<a href="#">NLCBC-56940X</a> = 4000K	<b>HZW</b> = Haze Reflector / White Flange	
	<b>MPW</b> = Matte Powder White Reflector / Matte Powder White Flange	
	<b>WW</b> = White Reflector / White Flange	

## Optional Accessories

Description	Ring Finish
<a href="#">NLCBC-569TIR15</a> = 15° TIR Optic	<b>B</b> = Black <b>BZ</b> = Bronze <b>HZ</b> = Haze <b>MPW</b> = Matte Powder White <b>WW</b> = White / White
<a href="#">NRA-21ISM</a> = Medium base screw-in socket (included)	
<a href="#">NRA-212SM</a> = Socket adapter for use with GU24 housings	

Example: [NLCBC-56927XWW](#) = 5" Cobalt LED Adjustable Retrofit, 2700K, White Reflector / White Flange, 120V input; Triac / ELV dimming

# PHOTOMETRICS

## 5" Cobalt LED Adjustable Retrofit

Type

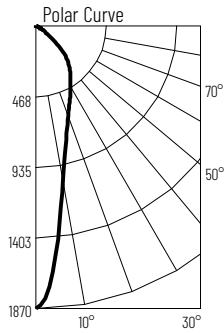
Project

Catalog No.

Notes

### Test Information

Test Number: NTR11163  
 Part Number: NLCBC-5694OSWW  
 Beam Spread: Spot  
 Lumens: 1236lm  
 Wattage: 13.2W  
 Efficacy: 93lpw  
 CCT / CRI: 4000K / 90 CRI  
 Spacing Criteria (0°-180): 0.4  
 Spacing Criteria (90°-270): 0.38



### Illuminance at a Distance

Distance from Luminaire	FC at Nadir	Beam Diameter
4'	117fc	1'-8"
6'	52fc	2'-6"
8'	29.2fc	3'-4"
10'	18.7fc	4'-1"
12'	13fc	5'

### Zonal Lumen Summary

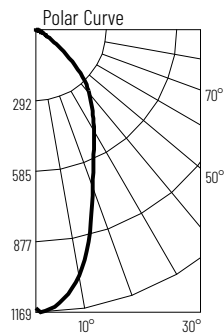
Zone	Lumens	% Luminaire
0-30	597	48.3
0-40	849	68.7
0-60	1157	93.6
0-90	1224	99
90-180	12	1
0-180	1236	100

### Candela Table

Vertical Angles	Candela
0	1870
5	1528
15	779
25	536
35	403
45	280

### Test Information

Test Number: NTR11162  
 Part Number: NLCBC-5694OMWW  
 Beam Spread: Narrow Flood  
 Lumens: 1254lm  
 Wattage: 13.1W  
 Efficacy: 96lpw  
 CCT / CRI: 4000K / 90 CRI  
 Spacing Criteria (0°-180): 0.74  
 Spacing Criteria (90°-270): 0.76



### Illuminance at a Distance

Distance from Luminaire	FC at Nadir	Beam Diameter
4'	72fc	3'-8"
6'	32fc	5'-7"
8'	18fc	7'-5"
10'	11.5fc	9'-4"
12'	8fc	11'-1"

### Zonal Lumen Summary

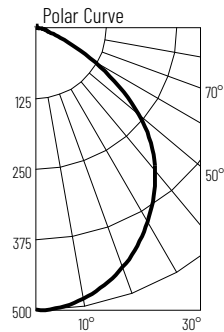
Zone	Lumens	% Luminaire
0-30	612	48.8
0-40	871	69.4
0-60	1180	94.1
0-90	1242	99
90-180	12	1
0-180	1254	100

### Candela Table

Vertical Angles	Candela
0	1152
5	1126
15	864
25	574
35	414
45	279

### Test Information

Test Number: NTR11161  
 Part Number: NLCBC-5694OFWW  
 Beam Spread: Flood  
 Lumens: 1107lm  
 Wattage: 13.2W  
 Efficacy: 84lpw  
 CCT / CRI: 4000K / 90 CRI  
 Spacing Criteria (0°-180): 1.2  
 Spacing Criteria (90°-270): 1.2



### Illuminance at a Distance

Distance from Luminaire	FC at Nadir	Beam Diameter
4'	31.2fc	9'-2"
6'	13.8fc	13'-11"
8'	7.8fc	18'-6"
10'	5fc	23'-1"
12'	3.5fc	27'-8"

### Zonal Lumen Summary

Zone	Lumens	% Luminaire
0-30	376	34
0-40	604	54.5
0-60	988	89.3
0-90	1095	98.9
90-180	12	1.1
0-180	1107	100

### Candela Table

Vertical Angles	Candela
0	499
5	497
15	473
25	426
35	364
45	290

### Lumen Output Multipliers

Color Temperature: 2700K (0.87), 3000K (0.96), 3500K (0.96), 4000K (1.00)