

NL-408AT

4" Q4 Square Air-Tight Low Voltage New Construction Housing

Source: 50W MR16 max.

Type

Project

Catalog No.

Notes

PRODUCT DESCRIPTION

The square housings feature die formed steel black painted housings. The Q4 is available with magnetic or electronic transformers. Reflectors feature deep set lamp holders for maximum visual comfort. Air-tight construction provides energy savings by reducing the flow of air through the ceiling

FEATURES

- Air-Tight energy saving by reducing the flow of air through the ceiling
- Internal thermal protection
- cULus listed for damp locations and through branch circuit wiring
- Quick connect provided
- 24-1/2" Bar hangers with captive nails and alignment foot

CONSTRUCTION

Plastic Frame: 0.040 steel frame with integral bar hanger brackets. Brackets can accommodate longer 27" accessory flat bar hangers.

Minimum Clearance: Non-IC housings require a minimum clearance of 3" from thermal insulation and 1/2" from adjacent building components.

Air Flow Restriction: Housing has factory installed gaskets to restrict airflow from room into ceiling plenum to <2CFM (cubic feet per minute) in accordance with ASTM-283 Air-Tight requirements.

Bar Hangers: Two 13-3/4" to 24-1/2" adjustable bar hangers with captive nails are included on frame. Hanger bars have T-Bar slot and alignment feet. Bar hangers are parallel to junction box, but can be repositioned 90° perpendicular to junction box if desired. "L" Shaped bar hanger foot to align to bottom of construction joist. A T-Bar notch allows easy installation in a suspended ceiling.

Junction Box: Prewired 25 cubic inch 0.060" thick galvanized steel, with seven 1/2" knockouts, four Romex® pryouts, and snap on cover. All leads are #18AWG wire, the ground wire is connected to the bottom, and quick connectors are supplied on all leads. Maximum of 8 no. 12 AWG through branch circuit conductors suitable for at least 90°C permitted in junction box.

ELECTRICAL

Input Voltage: 120V

Output Voltage: 12V

Socket: Bi-Pin GU5.3 socket with heat shield

Wattage: 50W max. (consult factory for lower wattage label)

Lamp: MR16 (not included)

Transformer: Electronic or Magnetic (must specify)

Electronic: Thermally protected, single tap input voltage available in 12V 60Hz with short circuit protection. Approved for use with LED lamps.

Magnetic: Thermally protected, single tap input voltage available in 12V 60Hz. Class H.

COMPATIBLE TRIM

NL-4585WW = Square Adjustable Reflector

OPTIONAL ACCESSORIES

NRA-28/0.5IN = 27" Flat Bar Hangers

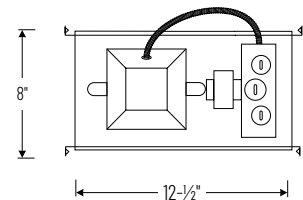
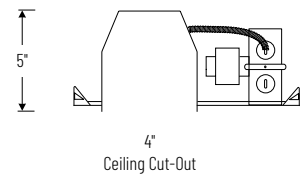
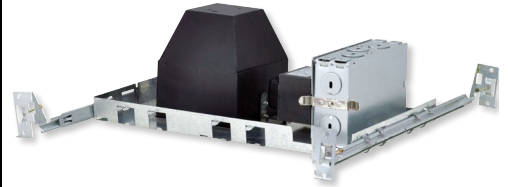
NRA-36N = Replacement socket with heat shield

LABELS AND LISTINGS

- cULus Listed for Damp Locations with Feed Through
- Meets or exceeds ASTM-283 Air-Tight Requirements



PRODUCT IMAGES & DIMENSIONS



4" Square Air-Tight Low Voltage New Construction Housing

Catalog No.

NL-408AT = 4" Square Air-Tight Low Voltage New Construction Housing, 120V Magnetic, 50W max.

NL-408AT/XX = 4" Square Air-Tight Low Voltage New Construction Housing, 120V Magnetic, labeled at lower wattage (**Consult Factory**)

NL-408AT/IEL = 4" Square Air-Tight Low Voltage New Construction Housing, 120V Electronic, 3W-50W

NL-408AT/IEL/XX = 4" Square Air-Tight Low Voltage New Construction Housing, 120V Electronic, labeled at lower wattage (**Consult Factory**)

Optional Accessories

Catalog No.

NRA-28/0.5IN = 27" Flat Bar Hangers

NRA-36N = Replacement socket with heat shield

Example: **NL-408AT/IEL** = 4" Square Air-Tight Low Voltage New Construction Housing, 120V Electronic, 3W-50W