

NL-301

TRUE 3" Non-IC Air-Tight Low Voltage New Construction Housing

Source: 50W MR16 max.

Type

Project

Catalog No.

Notes

PRODUCT DESCRIPTION

3" Low Voltage housings are a true three inches! Reduced wattage housings are useful in meeting watts per square foot requirements. Housings are available with magnetic or electronic transformers.

CONSTRUCTION

Plastic Frame: 0.025 steel frame with integral bar hanger brackets. Brackets can accommodate longer 27" accessory flat bar hangers. Shipping screw installed to provide extra security for transformer during shipment - remove before installation.

Housing: 0.050 white baked enamel one-piece drawn steel housing.

Minimum Clearance: Non-IC housings require a minimum clearance of 3" from thermal insulation and 1/2" from adjacent building components.

Air Flow Restriction: Housing has factory installed gaskets to restrict airflow from room into ceiling plenum to <2CFM (cubic feet per minute) in accordance with ASTM-283 Air-Tight requirements.

Bar Hangers: Two 13-3/4" to 24-1/2" adjustable bar hangers with captive nails are included on frame. Hanger bars have T-Bar slot and alignment feet. Bar hangers are parallel to junction box, but can be repositioned 90° perpendicular to junction box if desired. "L" Shaped bar hanger foot to align to bottom of construction joist. A T-Bar notch allows easy installation in a suspended ceiling.

Junction Box: Prewired 14 cubic inch 0.060" thick galvanized steel, with four 3/8" knockouts, four Romex® pryouts, and snap on cover. All leads are #18AWG wire, the ground wire is connected to the bottom, and quick connectors are supplied on all leads. Maximum of 8 no. 12 AWG through branch circuit conductors suitable for at least 90°C permitted in junction box.

Transformer:

Electronic: Thermally protected, single tap input voltage available in 12V 60Hz with short circuit protection. Approved for use with LED lamps.

Magnetic: Thermally protected, single tap input voltage available in 12V 60Hz. Class H.

ELECTRICAL

Input Voltage: 120V

Output Voltage: 12V

Socket: Bi-Pin GU5.3 socket with heat shield



Wattage: 50W max.

(Consult factory for lower wattage label)

Lamp: MR16 (not included)

Transformer: Electronic or Magnetic (must specify)

COMPATIBLE TRIMS


| | |
|---|--------------------------------------|
| NL-3310 | Round Adjustable Baffle |
| NL-3312 | Round Adjustable Reflector |
| NL-3345 | Round Adjustable Slot Aperture |
| NL-3365 | Round Adjustable Gimbal |
| NL-3318 | Round Eyeball with Baffle |
| NL-3348 | Round Wall Wash with Baffle |
| NL-3325  | Round Frosted Dome Lens (Wet Listed) |
| NL-3326  | Round Flat Lens (Wet Listed) |
| NL-3410 | Square with Round Baffle |
| NL-3412 | Square with Round Reflector |

OPTIONAL ACCESSORIES

[NRA-28](#) - 27" Flat Bar Hangers

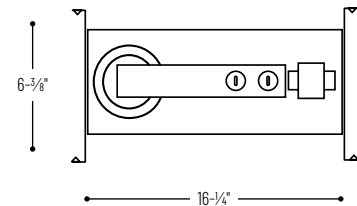
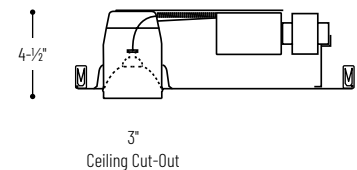
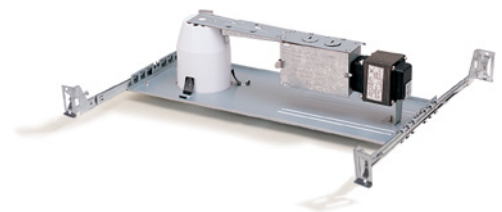
[NRA-36](#) - Replacement socket with heat shield

LABELS AND LISTINGS

- cULus Listed for Damp Location w/ Feed Through
-  Wet Location when used with designated trims
- Meets or exceeds ASTM-283 Air-Tight Requirements



PRODUCT IMAGES & DIMENSIONS



TRUE 3" Non-IC Air-Tight Low Voltage New Construction Housing

Catalog No.

NL-301AT/IEL = 3" Non-IC Air-Tight New Construction Housing, 120V Electronic, 3W-50W

NL-301AT/IEL/XX = 3" Non-IC Air-Tight New Construction Housing, 120V Electronic, labeled at lower wattage (**Consult Factory**)

NL-301QT = 3" Non-IC Air-Tight New Construction Housing, 120V Magnetic, 50W max.

NL-301QT/XX = 3" Non-IC Air-Tight New Construction Housing, 120V Magnetic, labeled at lower wattage (**Consult Factory**)

Optional Accessories

Catalog No.

NRA-28 = 27" Flat Bar Hangers

NRA-36 = Replacement socket with heat shield

Example: **NL-301QT** = 3" Non-IC Air-Tight Low Voltage New Construction Housing, 120V Magnetic, 50W max.