

# NHRIC-427LMRAT

4" Shallow IC Air-Tight LED Dedicated Remodel Housing  
(Compatible with Onyx and Pearl)

Type

Project

Catalog No.

Notes

## PRODUCT DESCRIPTION

Dedicated remodel housing for use in insulated ceilings can be in direct contact with insulation. Air-tight construction provides energy savings by reducing the flow of air through the ceiling. The housing is dedicated and labeled for use with LED retrofit luminaires.

## FEATURES

- Shallow IC rated housing for direct contact with insulation
- Quick connect provided for electrical connection to the LED downlight
- IC Air-Tight energy saving by reducing the flow of air through the ceiling
- cULus listed for damp location and through branch circuit wiring

## CONSTRUCTION

**Housing:** 0.040 steel housing is connected to 0.050 steem arm with junction box.

**Air Flow Restriction:** Housing has factory installed gaskets to restrict airflow from room into ceiling plenum to <2CFM (cubic feet per minute) in accordance with ASTM-283 Air-Tight requirements.

**Clearance:** "IC" Insulated ceiling housings are direct contact rated. **Not to be used in direct contact with spray foam insulation.**

**Mounting:** Four high tension springs secure the housing to an existing sheet rock ceiling. Accommodates ceiling thicknesses from 5/8" to 3/4".

**Junction Box:** Prewired 25 cubic inch 0.064" thick galvanized steel with six 1/2" trade size knockouts, one 3/4" trade size knockout, four Romex® pryouts, and snap on covers. All leads are #18AWG wire, the ground wire is connected to the bottom, and quick connectors are supplied on all leads. Maximum of 6 no. 12 AWG through branch circuit conductors suitable for at least 90°C permitted in junction box.

## ELECTRICAL

**Input Voltage:** 120/277V or 277V (must specify)

**Socket:** Quick connect for LED downlights

**Operating Temperature:** 77°F (25°C) max.

**Dimming:** Specified by downlight

## Step Down Transformer (converts 277V input to 120V)

Optional 50W step down transformer installed (NHRIC-427LMRAT/277).

## COMPATIBLE DOWNLIGHTS

[NOX-431](#) = Onyx Round Reflector (Wet Listed)

[NOX-432](#) = Onyx Round Baffle (Wet Listed)

[NOXAC-431](#) = AC Onyx Round Reflector (Wet Listed)

[NOXAC-432](#) = AC Onyx Round Baffle (Wet Listed)

[NOXAC-436](#) = AC Onyx Square Reflector (Wet Listed)

[NOXTW-431](#) = Onyx TW Round Reflector (Wet Listed)

[NOXTW-432](#) = Onyx TW Round Baffle (Wet Listed)

[NPR-4RC](#) = Pearl Round Adjustable Cone

[NPR-4RG](#) = Pearl Round Adjustable Gimbal

[NPR-4SC](#) = Pearl Square Adjustable Cone

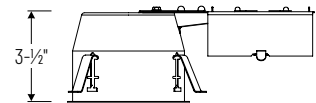
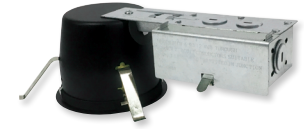
[NPR-4SG](#) = Pearl Square Adjustable Gimbal

## LABELS AND LISTINGS

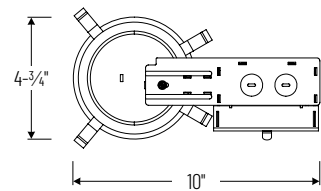
- cULus Listed for damp location & feed through (Wet Location when used with compatible downlights)
- ENERGY STAR certified
- Meets or exceeds ASTM-283 Air-Tight requirements
- Certified to the high efficacy requirements of California Title 24 JA8-2022 (when used with compatible downlights)
- RoHS compliant



## PRODUCT IMAGES & DIMENSIONS



4-1/4"  
Ceiling Cut-out



## 4" Shallow IC Air-Tight Dedicated Remodel Housing

Housing Type

**NHRIC-427LMRAT** = 4" Shallow IC Air-Tight Dedicated Remodel Housing, 120/277V input (120V Triac/ELV dimming)

**NHRIC-427LMRAT/277** = 4" Shallow IC Air-Tight Dedicated Remodel Housing, 277V input with step down transformer

Example: **NHRIC-427LMRAT** = 4" Shallow IC Air-Tight Dedicated Remodel Housing, 120V input