

NHIC-527LMRAT

5" Shallow IC Air-Tight LED Dedicated New Construction Housing
(Compatible with Cobalt, Onyx and Pearl)

Type

Project

Catalog No.

Notes

PRODUCT DESCRIPTION

Dedicated new construction housing for use in insulated ceilings can be in direct contact with insulation. Air-tight construction provides energy savings by reducing the flow of air through the ceiling. The housing is dedicated and labeled for use with LED retrofit luminaires.

FEATURES

- Shallow IC rated housing for direct contact with insulation
- Quick connect provided for electrical connection to luminaire
- ASTM E283 for Air-Tight
- ENERGY STAR certified

CONSTRUCTION

Housing: 0.040 aluminum housing with riveted cap adjusts for ceiling thicknesses from 5/8" to 1-1/4" depth.

Bar Hangers: Two 13-3/4" to 24-1/2" adjustable bar hangers with captive nails are included on frame. Hanger bars have T-Bar slot and alignment feet. Bar hangers are parallel to junction box, but can be repositioned 90° perpendicular to junction box if desired. "L" Shaped bar hanger foot to align to bottom of construction joist. A T-Bar notch allows easy installation in a suspended ceiling.

Junction Box: Prewired 25 cubic inch 0.064" thick galvanized steel with seven 1/2" trade size knockouts, four Romex® pryouts, and snap on covers. All leads are #18AWG wire, the ground wire is connected to the bottom, and quick connectors are supplied on all leads. Maximum of 8 no. 12 AWG through branch circuit conductors suitable for at least 90°C permitted in junction box.

ELECTRICAL

Input Voltage: 120/277V or 277V (must specify)

Socket: Quick connect for LED luminaires

Operating Temperature: 122°F (50°C) max.

Dimming: Specified by downlight

STEP DOWN TRANSFORMER (CONVERTS 277V INPUT TO 120V)

Optional 50W step down transformer installed (NHIC-527LMRAT/277). Maximum of 6 no. 12 AWG through branch circuit conductors in junction box.

COMPATIBLE DOWNLIGHTS

[NLCBC-5 / NLCBC2-5](#) = 5" Cobalt Downlights

[NOX-56 / NOXAC-56 / NOXTW-56](#) = 5" Onyx Downlights

[NPR-56RNDC](#) = 5" Pearl Downlight

Emergency: Housing can be specified with an emergency battery installed on frame (Cobalt only). Requires top access.

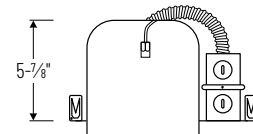
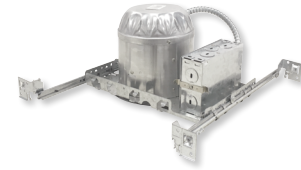
- Up to 7.5W emergency illumination with LEDs
- Illumination Time: 90min
- Voltage: 120/277 VAC, 60Hz
- Output Voltage: 15.0-50.0 VDC
- Remote test switch included

LABELS AND LISTINGS

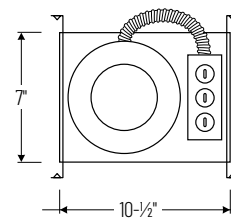
- cULus Listed for damp location & feed through (wet location when used with compatible downlights)
- ENERGY STAR certified
- Meets or exceeds ASTM-283 Air-Tight requirements
- Certified to the high efficacy requirements of California Title 24 JA8-2022 (when used with compatible downlight)
- RoHS compliant



PRODUCT IMAGES & DIMENSIONS



5-5/8"
Ceiling Cut-out



5" Shallow IC Air-Tight LED Dedicated New Construction Housing

Housing Type

NHIC-527LMRAT = 5" Shallow IC Air-Tight Housing, 120/277V input (120V Triac/ELV dimming)

NHIC-527LMRAT/277 = 5" Shallow IC Air-Tight Housing, 277V input with step down transformer

NHIC-527LMRAT/4W = 5" Shallow IC Air-Tight Housing, 120/277V input (120V Triac/ELV/0-10V & 277V 0-10V dimming, Cobalt only - LE4 required)

NHIC-527LMRAT/EM = 5" Shallow IC Air-Tight Housing with Emergency Battery and Remote Test Switch, 120/277V input (Cobalt only - EM required)

NHIC-527LMRAT/6WEM = 5" Shallow IC Air-Tight Housing with Emergency Battery and Remote Test Switch, 120/277V input (120V Triac/ELV/0-10V & 277V 0-10V dimming, Cobalt only - LE4EM required)

Example: **NHIC-527LMRAT** = 5" Shallow IC Air-Tight LED Dedicated New Construction Housing, 120/277V input