

# NUTP71 Series

## 24V Continuous Standard LED Tape Light

Source: 1.5W/ft. LED  
80lm/ft.

Type \_\_\_\_\_

Project \_\_\_\_\_

Catalog No. \_\_\_\_\_

Notes \_\_\_\_\_

### PRODUCT DESCRIPTION

Standard Continuous LED Tape producing 80 lumens per ft., the Standard Continuous LED Tape is only 7/16" wide and 1/16" thick. Designed to cast no shadows, our flexible LED light boasts a desirable seamless glow. The low profile tape is the ideal for coves, architectural details, under and in cabinets, toe kicks, and back lighting.

### FEATURES

- 20' or 100' Spool - Economical and Efficient
- 24V DC system
- 80 lumens per foot
- Single color illumination in three color temperatures (2700K, 3000K or 4200K)
- Field cuttable every 4" or 6 LEDs
- Easy to install; pre-applied 3M™ tape or acrylic mounting clips (included)

### INCLUDED WITH EVERY 100' ROLL

(1) 100' Tape Light Roll, (50) Acrylic Mounting Clips with screws and (1) 12" Power Line Interconnector

### INCLUDED WITH EVERY 20' ROLL

(1) 20' Tape Light Roll, (10) Acrylic Mounting Clips with screws and (1) 12" Power Line Interconnector

### SPECIFICATION

**Construction:** The Continuous LED Tape can be cut every 6 LEDs at marked 4" intervals, cutting does not effect circuit. Easy flip style snap-on connectors connect to the cut ends.

**Mounting:** Each Tape Light includes pre-applied 3M™ adhesive tape for simple installation. Optional channels and clear acrylic clips are available.

### LIMITATIONS

- Not rated or warranted for enclosed applications
- Tape light and most accessories are not rated for in-wall installation (NATL-W16-2 is rated for in-wall installations)
- Do not install in where LED chips are exposed to direct sunlight, as damage to the phosphor will occur

### ELECTRICAL

**Input Voltage:** 24V

**Lumens / Wattage:** 80lm / 1.5W per foot

**Color Temperature:** 2700K, 3000K or 4200K

**Color Rendering Index:** 90+ CRI

**Operating Temperature:** -25°C to 45°C

**Dimming:** Dimmable with Dimmable LED Driver

**Maximum Run Length:** 64'

### LABELS AND LISTINGS

- cULus Listed for Damp Location
- 3-Year Limited Warranty



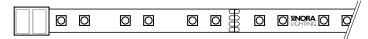
### PRODUCT IMAGES & DIMENSIONS



1/16" depth



0.59" width



## 24V Continuous Standard LED Tape Light

Length	CCT / CRI
<b>NUTP71-W20LED</b> = 20' Roll	<b>927L</b> = 2700K / 90 CRI
<b>NUTP71-W100LED</b> = 100' Roll	<b>930L</b> = 3000K / 90 CRI
<b>NUTP71-WFTLED</b> = Custom Cut (specify ft.)	<b>942L</b> = 4200K / 90 CRI

Example: **NUTP71-W100LED930L** = 100' 24V Continuous Standard LED Tape Light, 3000K / 90 CRI

# NUTP71 Series

## 24V Continuous Standard LED Tape Light Accessories

Type

Project

Catalog No.

Notes



Flip Type DC Plug Connector

<b>NATLCFC-209/3A</b>	3"
<b>NATLCFC-209/12A</b>	12"
<b>NATLCFC-209/48A</b>	48"
<b>NATLCFC-209/96A</b>	96"

Flip connector connects NUTP71 series to a driver.



Flip Type Splice Connector

<b>NATLCFC-208/3A</b>	3"
<b>NATLCFC-208/12A</b>	12"
<b>NATLCFC-208/48A</b>	48"
<b>NATLCFC-208/96A</b>	96"

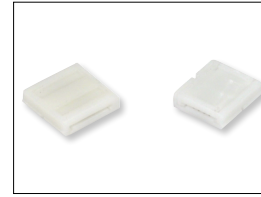
Flip connector connects NUTP71 series to 24V input source (No DC plug)



Flip Type Interconnector Cable

<b>NATLCFC-203A</b>	3"
<b>NATLCFC-206A</b>	6"
<b>NATLCFC-212A</b>	12"
<b>NATLCFC-224A</b>	24"
<b>NATLCFC-248</b>	48"
<b>NATLCFC-272A</b>	72"
<b>NATLCFC-296A</b>	96"

Allows easy linking of two pieces of NUTP71 series. Cables are flexible and can be moved in any direction.



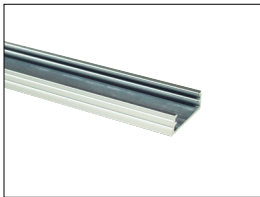
Flip Type Link Connector

**NATLCFC-200A** 12mm  
Allows connecting two pieces of NUTP71 series



Clear Acrylic Mounting Clips

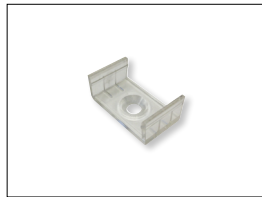
**NATHR-685** Pack of 15  
Use in conjunction with adhesive backing to attach Tape Light to a surface. Clear acrylic mounting clips are included with every Tape Light roll.



4' Channel

**NATHR-680** Aluminum

Mounts Tape Light to various surfaces. Field cuttable.



Mounting Clips for Channels

**NATL-CMC** Pack of 15

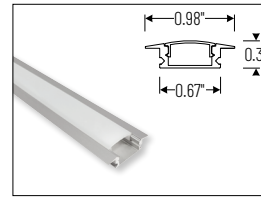
Mounting clips for NATL-C23, NATL-C24 and NATL-C27. Pack includes 15 mounting clips.



4' Shallow Recessed Channel

**NATL-C23A** Aluminum

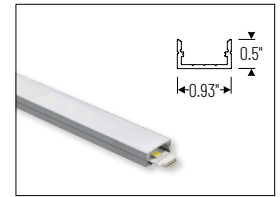
Used to mount tape light recessed in a surface. Plastic diffuser and end caps included. Field cuttable.



4' Shallow Recessed Channel

**NATL2-C23A** Aluminum

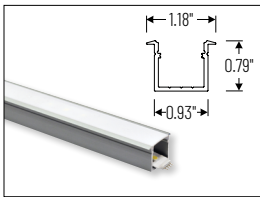
Used to mount tape light recessed in a surface. Diffused lens, end caps and mounting hardware are included. Field cuttable.



4' Shallow Channels

**NATL-C24A** Aluminum  
**NATL-C24B** Black  
**NATL-C24W** White

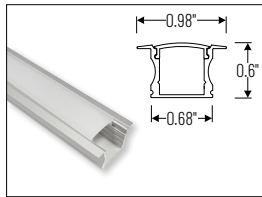
Used to mount tape light to various surfaces. Plastic diffuser and end caps included. Field cuttable. 4' Deep



Recessed Channel

**NATL-C25A** Aluminum

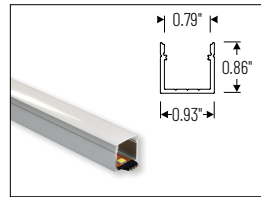
Used to mount tape light recessed in a surface. Plastic diffuser and end caps included. Field cuttable.



4' Deep Recessed Channel

**NATL2-C25A** Aluminum

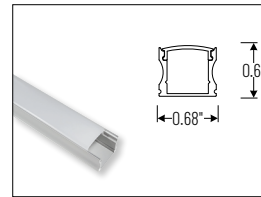
Used to mount tape light recessed in a surface. Diffused lens, end caps and mounting hardware are included. Field cuttable.



4' Deep Channels

**NATL-C26A** Aluminum  
**NATL-C26B** Black  
**NATL-C26W** White

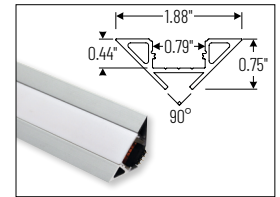
Used to mount tape light to various surfaces. Plastic diffuser and end caps included. Field cuttable.



4' Deep Channel

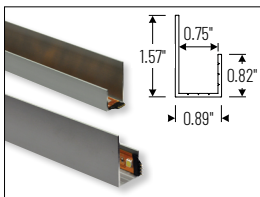
**NATL2-C26A** Aluminum

Used to mount tape light to various surfaces. Diffused lens, end caps and mounting hardware are included. Field cuttable. 4' Corner Channels



**NATL-C28A** Aluminum  
**NATL-C28B** Black  
**NATL-C28W** White

Plastic diffuser and End caps included. Field cuttable



4' J-Style Channel

**NATL-C27A** Aluminum

Used to mount tape light to various surfaces. Field cuttable.

# NUTP71 Series

## 24V Continuous Standard LED Tape Light Drivers & Accessories

Type

Project

Catalog No.

Notes



Direct Plug-In LED Driver

**NATL-524W** 24V 24W  
**NATL-545W** 24V 45W

**Input Voltage:** 120V  
**Cable Length:** 6'



Direct Plug-In LED Driver

**NATL-596W** 24V 96W

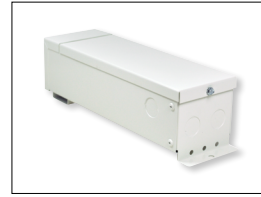
**Input Voltage:** 120V  
**Input Wire:** 5' Cord and Plug  
**Output Wire:** 44" Power line connector



Class II Hardwire LED Driver

**NATL-5100HW** 24V 81.6W

**Input Voltage:** 120-240V  
**Dimming:** Non-Dimmable  
**Includes:** 10' Power Line Connector



Class II Hardwire LED Driver  
0-10V Dimming

**NATL-5096-24-HWD10** 24V 81.6W

**Input Voltage:** 120-277V  
**Dimming:** 0-10V  
**Includes:** 10' Power Line Connector



Class II Hardwire LED Driver  
ELV Dimming

**NATLED-5040HW** 24V 40W  
**NATLED-5075HW** 24V 75W

**Input Voltage:** 120V  
**Dimming:** ELV  
**Includes:** 10' Power Line Connector



Class II Hardwire LED Driver  
with Breakers, MLV Dimming

**NMT-303/24C2D1** 120V/24V  
**NMT-303/24C2D2** 277V/24V

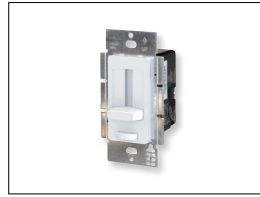
**Input Voltage:** 120V or 277V  
**Dimming:** Magnetic Low Voltage  
**Breakers:** (3) 100W  
**NOTE:** Power Line Connector(s) not included



Class II Hardwire LED Driver  
with Regulator, MLV Dimming

**NMTD-60/24D** 24V 60W  
**NMTD-96/24D** 24V 96W

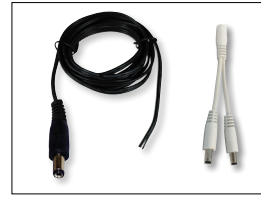
**Input Voltage:** 120-277V  
**Dimming:** Magnetic Low Voltage  
**Regulator:** Integral regulator for constant current and voltage  
**Includes:** 10' Power Line Connector



NEXUS® All-in-One LED Driver and Dimmer

**NATL-SWEX60/24A** 24V 60W  
**NATL-SWEX100/24A** 24V 100W

**NATL-SWEX/3FP** 3 Face Plates  
**Input Voltage:** 120V  
**Dimming:** Integral Dimmer  
**Description:** Eliminates the driver and allows 120V input and 24V output from a single gang box. 100-5% dimming and on/off switch.



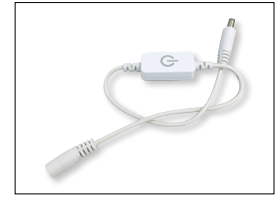
Power Line Connector

**NALTL-10** 10' Power Line  
**NALTL-30** 30' Power Line

For use with Class II drivers. Carries output from driver, requires power line interconnectors.

**NATL-302W** 5" Splitter

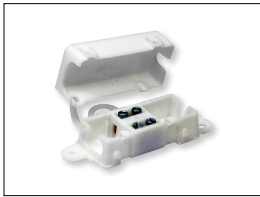
Splits power line connector into two separate leads, requires power line cable.



Touch Dimmer with Memory

**NATL-518W**

72W max., no power fail memory, touch on/off and hold to dim.



Low Voltage Splice Box

**NATL-415W**

Use to join low voltage lead to power line connector.



Terminal Block

**NATL-407** 4-Way  
2-3/8"L x 1-1/8"W x 7/8"D

**NATL-408** 8-Way  
4"L x 1-1/8"W x 7/8"D



Wire Clip, Plastic - 10pk

**NATL-404W** J-Clip  
**NATL-405W** Over the Wire  
**NATL-406W** Square Clip



2' Wire Raceway

**NATL-422B** Black  
**NATL-422W** White

Field-cuttable plastic. Includes wire channel with double faced tape and cover.