

NA-277

277V to 120V Step Down Transformer

Type

Project

Catalog No.

Notes

PRODUCT DESCRIPTION

Nora's step down transformer is an accessory offered to take 277V supply voltage and reduce it to 120V. The transformer is installed by a qualified electrician on a supply junction box before the 120V load.

FEATURES

- Allows 120V products to be supplied by higher voltages
- Simply mounts to junction box using standard knockout
- Dimmable
- 50W, 100W or 250W options available

ELECTRICAL SYSTEM

Steps 277V line voltage down to 120V. Attaches to knockout on first fixture's junction box in a circuit. To calculate usable load, de-rated by 25%.

Dimming - Primary Side: Dimming on the primary side must be done with a 277V low voltage magnetic dimmer.

Dimming - Secondary Side: Dimming on the secondary side (120V) must be done with a recommended compatible dimmer for the secondary load type.

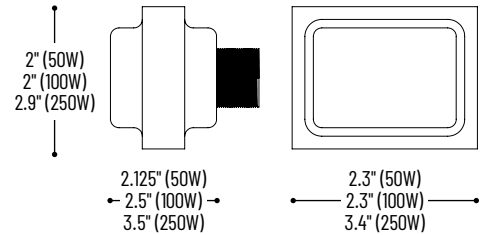
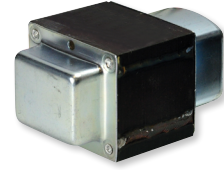
Minimum Clearance: Must be a minimum of 3" from thermal insulation and 1/2" from adjacent building components

LABELS AND LISTINGS

cULus Listed

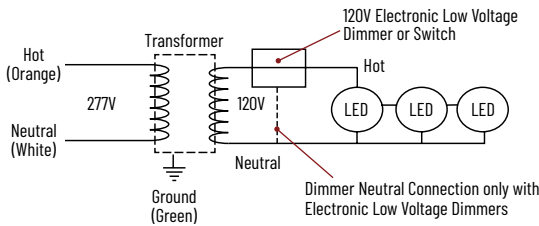


PRODUCT IMAGES AND DIMENSIONS



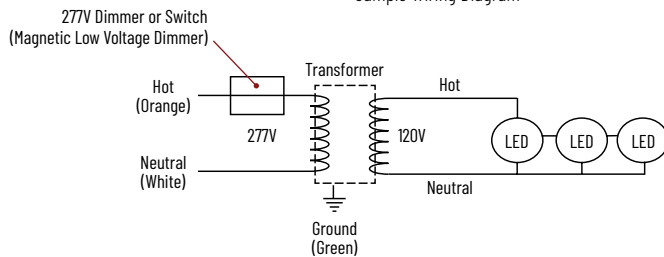
Transformer with Dimmer / Switch on Secondary (Use recommended compatible dimmer for secondary load)

Sample Wiring Diagram



Transformer with Dimmer / Switch on Primary

Sample Wiring Diagram



277V to 120V Step Down Transformer

Catalog No.

NA-277/250MC = 250W 277V/120V Step Down Transformer

NA-277/100MC = 100W 277V/120V Step Down Transformer

NA-277/50MC = 50W 277V/120V Step Down Transformer

Example: **NA-277/250MC** = 250W 277V/120V Step Down Transformer