

USB Receptacles - 15 A

Features

- Dual USB ports.
- Color and texture matches Lutron dimmers.
- Wallplates available in a variety of colors and finishes.
- Tamper resistant.
- Side or back wire installation capable.
- 125 V~ only (U.S. style wallbox).
- Designer style receptacles (Claro) can be ganged with other designer style devices.
- Architectural style receptacles (Nova T☆) can be ganged with other architectural style devices.

Model Numbers

Designer (Claro) (Gloss and Satin Finishes)

CAR-15-UBTR-XX^{1,2} 15 A Claro Receptacle (Gloss Finish)

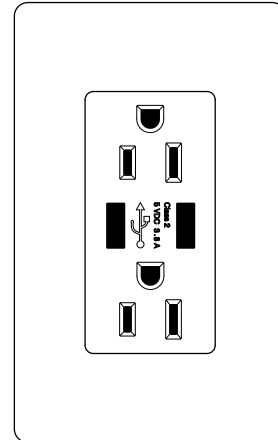
SCR-15-UBTR-YY^{1,3} 15 A Claro Receptacle (Satin Finish)

Architectural (Nova T☆)

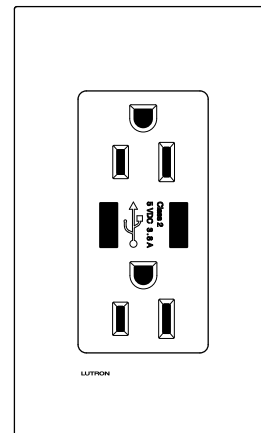
NTR-15-UBTR-ZZ^{4,5} 15 A Nova T☆ Receptacle

15 A USB Receptacles

Designer (Claro)



Architectural (Nova T☆)



¹ Wallplates ordered separately. For information on ordering wallplates, please visit www.lutron.com/en-US/Products/Pages/StandAloneControls/Wallplates-Accessories/WallplatesAccessories.aspx

² "XX" in model number represents Gloss finish. See page 5 for corresponding **Color/Finish Codes**.

³ "YY" in model number represents Satin finish. See page 5 for corresponding **Color/Finish Codes**.

⁴ "ZZ" in model number represents Architectural Matte finish. See page 6 for corresponding **Color/Finish Codes**.

⁵ Wallplates provided for single gang receptacles. For information on ordering multi-gang wallplates, please visit www.lutron.com/en-US/Products/Pages/StandAloneControls/Wallplates-Accessories/WallplatesAccessories.aspx

Job Name:

Model Numbers:

Job Number:

Specifications

Regulatory Approvals

- Lutron Quality Systems registered to ISO 9001:2008.
- All receptacles comply with UL498
- USB receptacle complies with UL1310

Ratings

- 15 A 125 V~ 60 Hz
- USB 3.8 A* 5 V== dual output Type A 2.0 (3.8 A is the combined output of both ports)
- Dielectric withstand: 1500 V~ for 1 minute
- Off state power consumption: 0.1 W
- USB ports: Rated for minimum 10,000 insertions and removals
- Complies with battery charging specification BC1.2
- Compatible with USB 1.1/2.0/3.0 devices

Terminals

- Each terminal accepts up to two 14 AWG to 10 AWG (1.5 mm² to 6.0 mm²) wires.
- Side or back wire installation capable.
- Solid or stranded wires.
- Copper wires only.

Environment

- Ambient operating temperature: 32 °F to 104 °F (0 °C to 40 °C)
- Maximum 90% non-condensing relative humidity
- Indoor use only

Mounting

- Minimum wallbox dimensions: 3 in (76 mm) H x 2 in (51 mm) W x 2.5 in (64 mm) D.

* Charging certain combinations of devices from the USB ports, may result in currents greater than the 3.8 A product rating.

Job Name:	Model Numbers:
Job Number:	

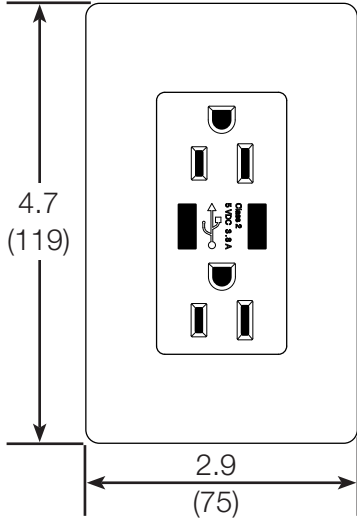
Dimensions

Measurements shown as: in (mm)

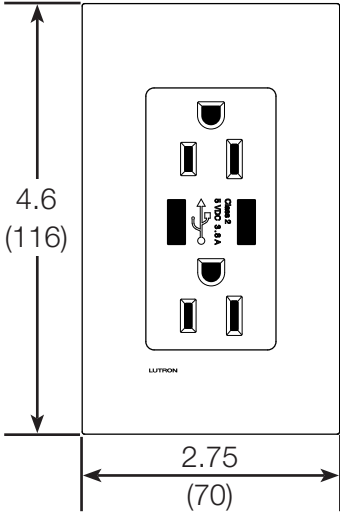
Designer (Claro)

Architectural (Nova T☆)

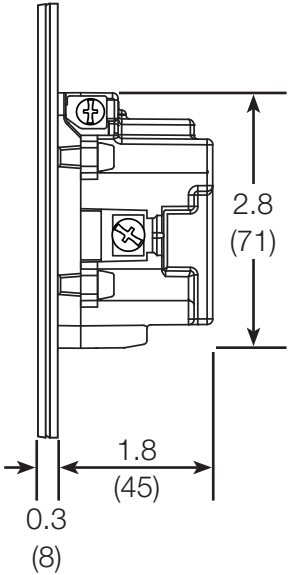
Front



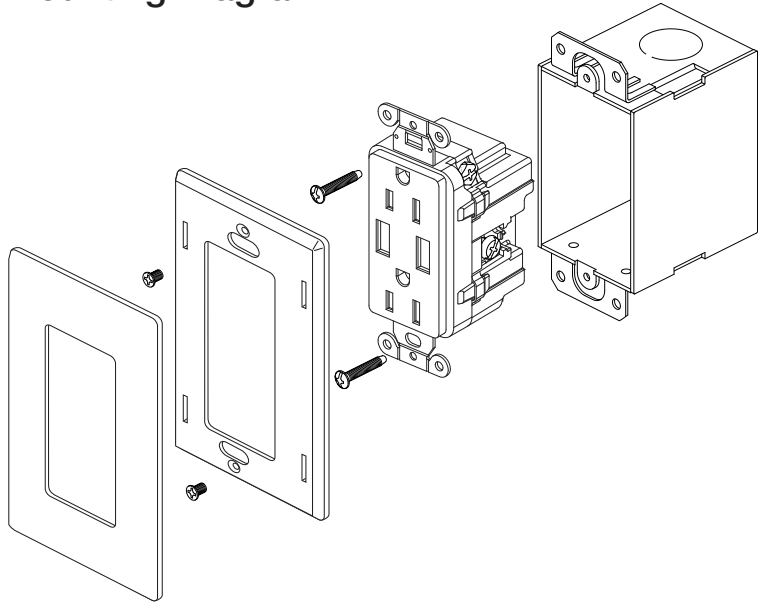
Front



Side

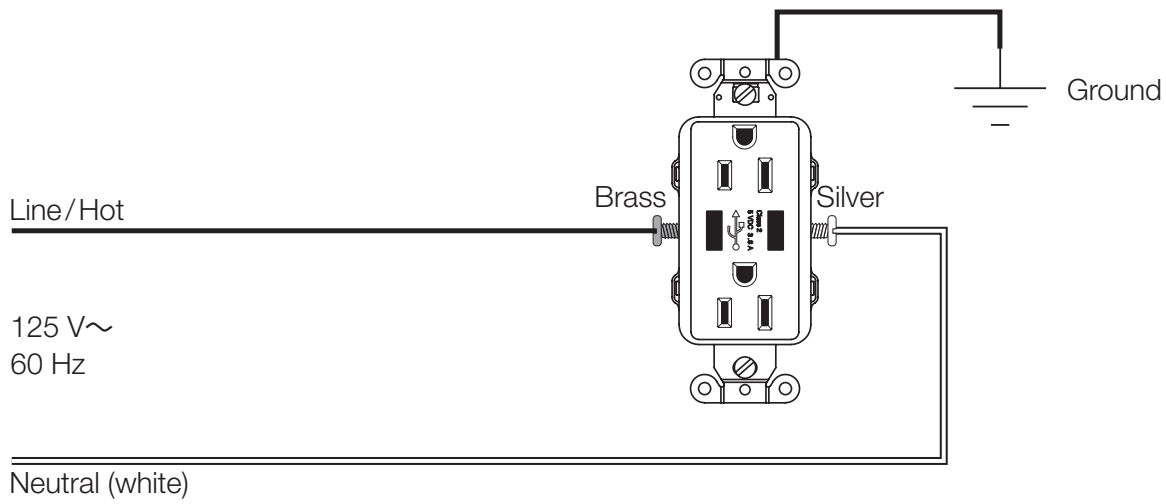


Mounting Diagram



<p>Job Name:</p> <p>Job Number:</p>	<p>Model Numbers:</p>
--	-----------------------

Wiring Diagram



Note: Top and bottom receptacles cannot be split apart into independent Line Hot and Switched Hot connections.

Job Name:	Model Numbers:
Job Number:	

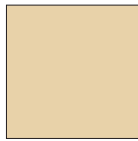
Colors and Finishes

Gloss Finishes

Satin Finishes



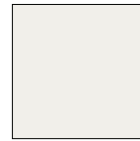
White
WH



Ivory
IV



Brilliant White
BW



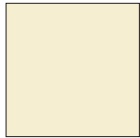
Glacier White
GL



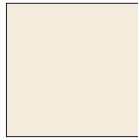
Snow
SW



Architectural
White
RW



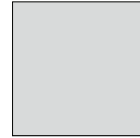
Almond
AL



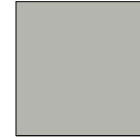
Light Almond
LA



Lunar Gray
LG



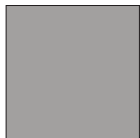
Mist
MI



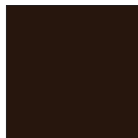
Pebble
PB



Cobblestone
CS



Gray
GR



Brown
BR



Slate
SL



Midnight
MN



Biscuit
BI



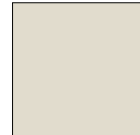
Sand
SD



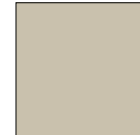
Black
BL



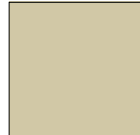
Taupe
TP



Pumice
PM



Clay
CY



Sage
SA



Espresso
EP



Truffle
TF



Deep Sea
DE



Signal Red
SR

- Due to printing limitations, colors and finishes shown cannot be guaranteed to perfectly match actual product colors.
- Color chip keychains are available for more precise color matching:
 Gloss Finishes: DG-CK-1
 Satin Finishes: SF-CK-1
 For coordinating wallplates and accessories, visit lutron.com/claro

Continued on next page...

<p>Job Name:</p> <p>Job Number:</p>	<p>Model Numbers:</p>
--	------------------------------

Colors and Finishes *(continued)*

Architectural Matte Finishes



White
WH



Ivory
IV



Almond
AL



Light Almond
LA



Gray
GR



Brown
BR



Black
BL



Taupe
TP



Sienna
SI



Beige
BE

Satin Colors (while supplies last)



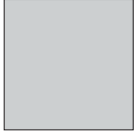
Hot
HT



Merlot
MR



Plum
PL



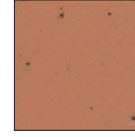
Palladium
PD



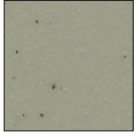
Eggshell
ES



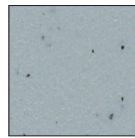
Sienna
SI



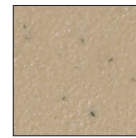
Terracotta
TC



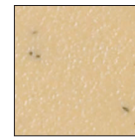
Greenbriar
GB



Bluestone
BG



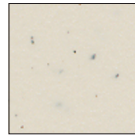
Mocha Stone
MS



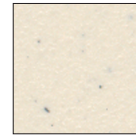
Goldstone
GS



Desert Stone
DS



Stone
ST



Limestone
LS

- Due to printing limitations, colors and finishes shown cannot be guaranteed to perfectly match actual product colors.
- Color chip keychains are available for more precise color matching:
Architectural Matte Finishes: AM-CK-1
Satin Colors: SC-CK-1 (while supplies last)

The Lutron logo, Lutron, Claro, Satin Colors and Nova T[®] are trademarks or registered trademarks of Lutron Electronics Co., Inc. in the US and/or other countries.

<p>Job Name:</p> <p>Job Number:</p>	<p>Model Numbers:</p>
--	------------------------------