

Diva Reverse-Phase (Electronic Low-Voltage) Dimmer

Dimmer for ELV, LED, CFL, Halogen, and Incandescent dimmable bulbs.

Features

- On/off paddle switch with a linear-slide dimmer for a standard designer wallplate opening.
- Built-in soft-glow locator light behind paddle switch.†
- UL® Listed to control:
 - Dimmable LED with integrated driver
 - Dimmable compact fluorescent (CFL) with integrated ballast
 - Incandescent/halogen
 - Electronic Low-Voltage (ELV) transformers with halogen or LED (see Lutron App Note #559)
- Reverse-phase type control. Neutral wire connection is required in the wallbox.
- 100% factory tested.

Application Requirements

- **For the best performance, use a bulb that is on the Lutron LED Report Card Tool at www.lutron.com/ledtool**
For questions call 1.877.DIM.LED8.
- When dimming LEDs or CFLs, only bulbs marked or rated as DIMMABLE WITH REVERSE-PHASE OR UNIVERSAL DIMMERS may be used.
- Not compatible with magnetic low-voltage (MLV) transformers or magnetic LED transformers/drivers.
- Dimmer is not compatible with bulbs rated only for forward-phase type dimmers.
- Coordinating Claro and Stainless Steel wallplates available separately.

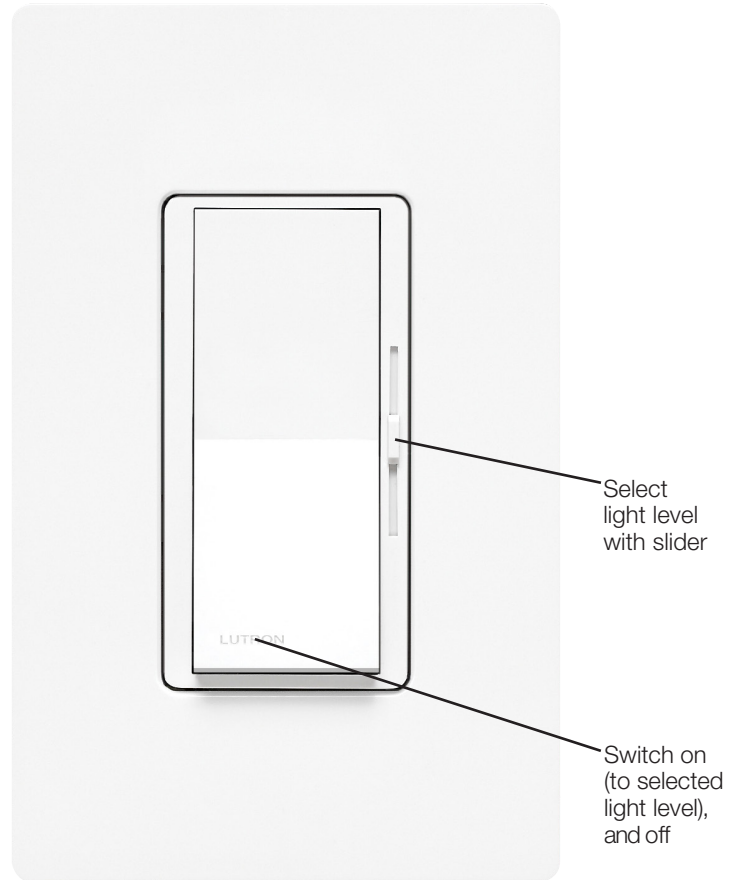
Model Number

DVRP-253P-XX¹ Single-pole/3-way²
 DVSCR-253P-XX¹ Satin finish, Single-pole/3-way²

¹ "XX" in the model number represents color/finish code; see **Colors and Finishes** section.

² For 3-way and 4-way switching, use Claro switches or other mechanical switches.

† Locator light may not be noticeable in darker colors.



Job Name:	Model Numbers:
Job Number:	

Specifications

Regulatory Approvals

- UL® Listed to US and Canadian safety requirements UL1472/CSA C22.2 184.1
- NOM

Power and Ratings

- 120 V~ 60 Hz
- 250 W dimmable LED/CFL
or
- 500 W incandescent/halogen
or
- 500 W ELV with halogen
or
- Mixed bulb type per **Multigang and Mixed Bulb Type Ratings** table (see page 3)

Minimum Load

- 1 compatible LED/CFL bulb
or
- 5 W incandescent/halogen
or
- 1 ELV transformer (See note on page 3)

Environment

- For indoor use only.
- Operating temperatures 32 °F to 104 °F (0 °C to 40 °C).

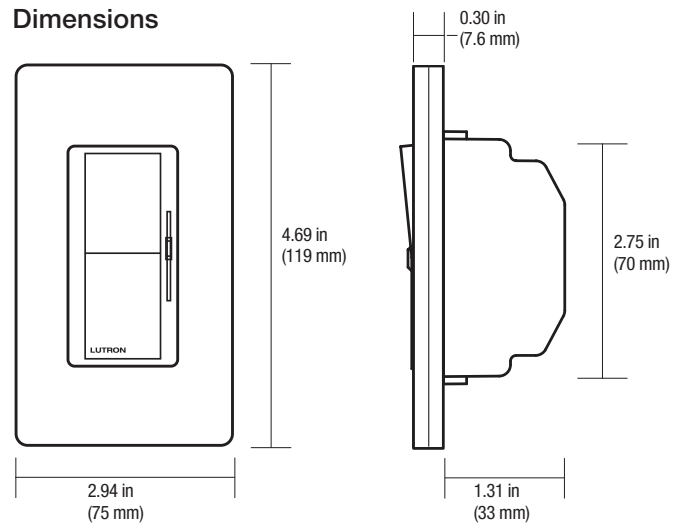
Performance

- Power-failure memory
- Captive linear slider
- Electrostatic discharge tested
- Precise color matching
- Mechanical air-gap switch to disconnect load power

Warranty

- 1 Year Limited Warranty
For additional Warranty information, please visit http://www.lutron.com/TechnicalDocumentLibrary/369-119_Wallbox_Warranty.pdf

Dimensions



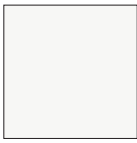
Note: Requires a U.S. wallbox 2½ in (64 mm) deep minimum.

Job Name:	Model Numbers:
Job Number:	

Colors and Finishes

Gloss Finishes

Satin Finishes



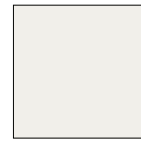
White
WH



Ivory
IV



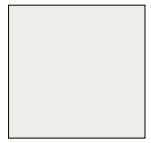
Brilliant White
BW



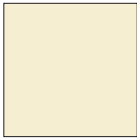
Glacier White
GL



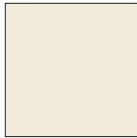
Snow
SW



Architectural
White
RW



Almond
AL



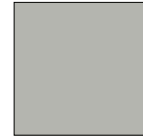
Light Almond
LA



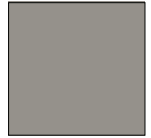
Lunar Gray
LG



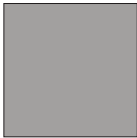
Mist
MI



Pebble
PB



Cobblestone
CS



Gray
GR



Brown
BR



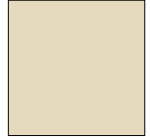
Slate
SL



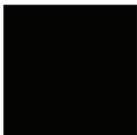
Midnight
MN



Biscuit
BI



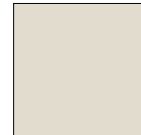
Sand
SD



Black
BL



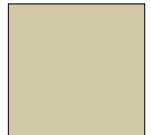
Taupe
TP



Pumice
PM



Clay
CY



Sage
SA



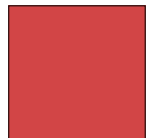
Espresso
EP



Truffle
TF



Deep Sea
DE



Signal Red
SR

- Due to printing limitations, colors and finishes shown cannot be guaranteed to perfectly match actual product colors.
- Color chip keychains are available for more precise color matching:
Gloss Finishes: DG-CK-1
Satin Finishes: SF-CK-1
- For coordinating wallplates and accessories, visit lutron.com/claro

Job Name:	Model Numbers:
Job Number:	

Colors and Finishes *(continued)*

Satin Colors (while supplies last)



Hot
HT



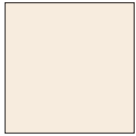
Merlot
MR



Plum
PL



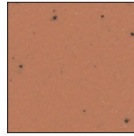
Palladium
PD



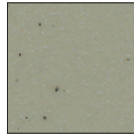
Eggshell
ES



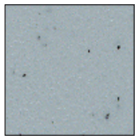
Sienna
SI



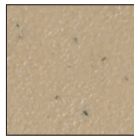
Terracotta
TC



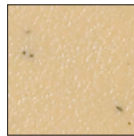
Greenbriar
GB



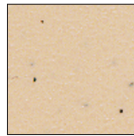
Bluestone
BG



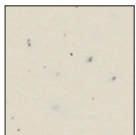
Mocha Stone
MS



Goldstone
GS



Desert Stone
DS



Stone
ST



Limestone
LS

- Due to printing limitations, colors and finishes shown cannot be guaranteed to perfectly match actual product colors.
- Color chip keychains are available for more precise color matching:
Satin Colors: SC-CK-1 (while supplies last)

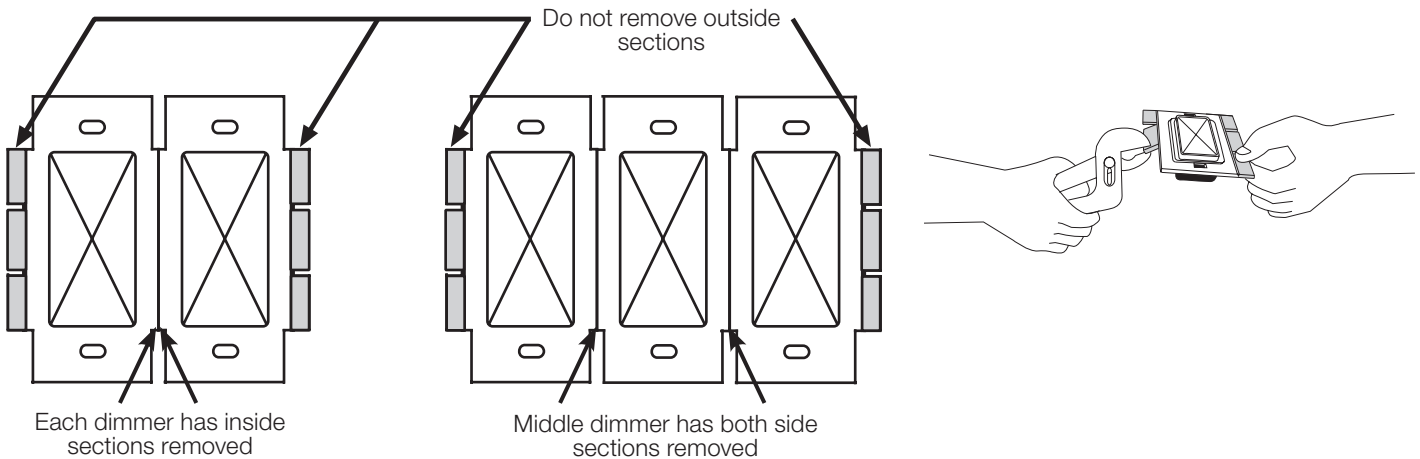
<p>Job Name:</p> <p>Job Number:</p>	<p>Model Numbers:</p>
--	------------------------------

Multigang and Mixed-Bulb-Type Ratings

When installing more than one dimmer in the same wallbox, it may be necessary to remove some side sections prior to wiring (**see diagram**). Removal of dimmer side sections may reduce maximum wattage, as shown in the chart below.

Mixing bulb types (**using a combination of LED/CFL and Incandescent/Halogen bulbs**) will also affect the maximum ratings, as shown in the chart below.

*EXAMPLE: If one set of side sections is removed and you have two 20 W LED bulbs installed (Total LED Wattage = 40 W), you may add up to 300 W of incandescent or halogen lighting.



Total LED/CFL Wattage Installed (Wattage per bulb x # of bulbs)	CFL LED	Maximum Allowable Incandescent/Halogen Wattage		
		No sides removed	1 side removed	2 sides removed
0 W	+	500	400	300
1 W - 40 W	+	400	300	200
41 W - 80 W	+	300	200	100
81 W - 120 W	+	200	100	50
121 W - 160 W	+	100	50	25
161 W - 200 W	+	50	0	0
201 W - 250 W	+	0	0	0

Note: For recommended ELV transformers and compatible MR16 LED bulbs, please see Lutron Application Note #559 at www.lutron.com/TechnicalDocumentLibrary/048559.pdf. Always follow the transformer and bulb manufacturer instructions for allowable loading.

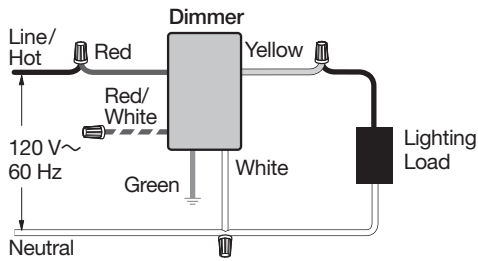
Load Type and Capacity

Model Number	Voltage	Load Type	Minimum Load	Maximum Load			
				Not Ganged	End of Gang	Middle of gang	
DVRP-253P-XX	120 V~	LED	1 bulb	250 W (No Derating Required)			
		CFL	1 bulb	No Derating Required			
		ELV Transformer with LED	See Application Note #559 (P/N 048559) at www.lutron.com No Derating Required				
		ELV Transformer with Halogen	1 transformer	500 W	400 W	300 W	
		Incandescent/Halogen	5 W	500 W	400 W	300 W	

Job Name:	Model Numbers:
Job Number:	

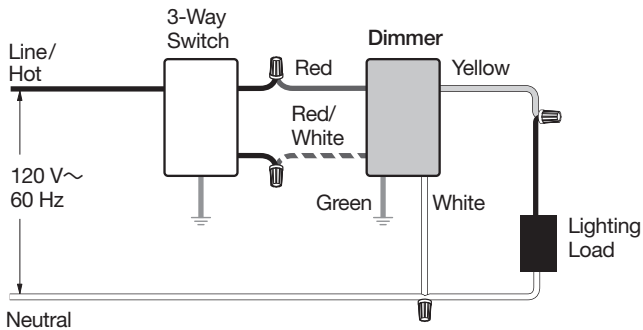
Wiring Diagrams

Single-Pole Wiring



3-Way Wiring

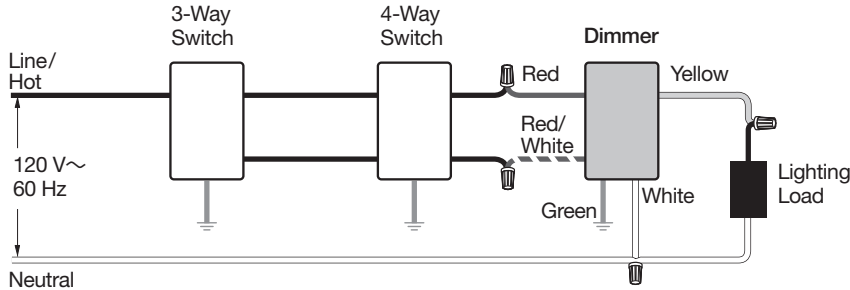
Dimmer Load-Side



Note: Dimmer must be installed on load-side per diagram.

4-Way Wiring

Dimmer Load-Side



Note: Dimmer must be installed on load-side per diagram.

Note: DO NOT swap the red and yellow wires or the LED dimming performance may be adversely affected.

Lutron, the Lutron logo, Claro, Satin Colors and Diva are trademarks or registered trademarks of Lutron Electronics Co., Inc. in the US and/or other countries. All other product names, logos, and brands are property of their respective owners.

Job Name:	Model Numbers:
Job Number:	