

MS303-DS

Manual Motor Controller

30 Amp, 600 Volt, 3-Pole, Three-Phase Single Throw AC Manual Motor Controller, Suitable as Motor Disconnect, Standard Toggle, Industrial Grade, Non-Grounding, Back & Side Wiring - Black

ROHS Compliant : Yes

Powerswitch® Industrial Grade AC Manual Motor Controllers provide safe, reliable control of a variety of motor loads. Typical applications include manual ON/OFF switching control of conveyor systems, pumping machines, HVAC systems, air compressors and other heavy manufacturing equipment. These motor controllers are available for both single-phase and three-phase applications.



Color :  Black

UPC Code : 078477374153

Country Of Origin : Mexico

Available Colors :


White

Technical Information

AC Horsepower Ratings

HP Rating : 3HP-120V, 7.5HP-240V, 15HP-480V, 20HP-600V

Electrical Specifications

Amperage : 30 A

Dielectric Voltage :
Withstands 2200 VAC for 1 min.

Endurance : 6,000 cycles
inductive motor type load

Grounding : Non-Grounding

Overload UL20 Test : 50
cycles at 6 times full rated
current

Pole : 3

Short Circuit Current Rating :
10,000 RMS symmetrical amps
at 600V AC max. when
protected by a 30A time delay
fuse

Temperature Rise : 50°C Max
at full rated current

Voltage : 600 VAC

Environmental Specifications

Flammability : Rated V-0 per
UL 94

Material Specifications

Base Material : Thermoplastic
Polyester

Contacts : Silver-Alloy

Cover Material : Thermoplastic
Polyester

Strap Material : Nickel-Plated
Brass

Terminal Screws : Nickel-
Plated Brass 10-32, Triple
Combination

Toggle : Thermoplastic Polyester

Mechanical Specifications

Product ID : Ratings are permanently marked on device

Terminal Accom. : #10 - #8 AWG

Terminal ID : T1, T2, T3, L1, L2 & L3 marked on back of device

Termination : Back & Side

Torque Range : 20 inch pounds maximum

Standards and Certifications

ANSI : C-73

NEMA : WD-1 & WD-6

NOM : NOM-ANCE

UL 60947-4-1 : supersedes UL 508

Warranty : 10-Year Limited

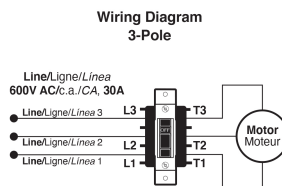
cUL per CSA C22.2 No. 111 : File #E63969

Product Features

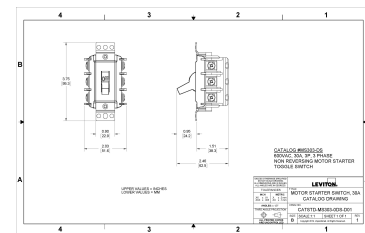
Color : Black

Device Type : Toggle Switch

Wiring Diagram



Dimensional Drawing



SPECIFICATION SUBMITTAL

JOB NAME: <input type="text"/>	CATALOG NUMBERS: <input type="text"/>	<input type="text"/>
JOB NUMBER: <input type="text"/>	<input type="text"/>	<input type="text"/>

Leviton Manufacturing Co., Inc

201 North Service Road, Melville, NY 11747

Telephone: +1-800-323-8920 · FAX: +1-800-832-9538 · Tech Line (8:30AM-7:30PM E.S. T. Monday-Friday): +1-800-824-3005

Leviton Manufacturing of Canada, Ltd.

165 Hymus Boulevard, Pointe Claire, Quebec H9R 1E9 · Telephone: +1-800-469-7890 · FAX: +1-800-824-3005 · www.leviton.com/canada

Leviton S. de R.L. de C.V.

Lago Tana 43, Mexico DF, Mexico CP 11290 · Tel.: (+52)55-5082-1040 · FAX: (+52) 5386- 1797 · www.leviton.com.mx

Visit our Website at: www.leviton.com

© 2024 Leviton Manufacturing Co., Inc. All Rights Reserved. Subject to change without notice.

Leviton has a global presence.

If you would like to know where your local Leviton office is located please go to:
www.leviton.com/international/contacts

© 2024 Leviton Manufacturing Co., Inc.